



TOWNSVILLE YACHT CLUB
Sailing

2026 SEASON NOTICE OF RACE and SAILING INSTRUCTIONS



Akarana – Winner of 2025 Commodore's Cup

Townsville Yacht Club
1 Plume Street
South Townsville
QLD 4810
www.townsvilleyachtclub.com.au
(07) 4772 1192

Version Control

Version	Date	Note
0.1	15/12/2025	First draft
0.2	15/1/2026	Second draft
1.0	10/2/2026	Approved by TYC Sailing Committee
1.1	10/2/2026	Approved by Race Director

Contents

1	RULES	4
2	DEFINITIONS	4
3	BOAT REGISTRATION	4
4	RACE ENTRY	5
5	CREW MEMBERSHIP	6
6	NOTICES TO COMPETITORS	6
7	CHANGES TO SAILING INSTRUCTIONS	6
8	SIGNALS MADE ASHORE	7
9	SCHEDULE OF EVENTS	7
10	PRIZES	7
11	DIVISIONS AND FLAGS	8
12	RACING AREA	8
13	THE COURSES	8
14	SAILING THE COURSE	8
15	MARKS	9
16	THE START	9
17	RECALLS	10
18	CHANGE OF THE NEXT LEG OF THE COURSE	10
19	SHORTENING THE COURSE	10
20	THE FINISH	10
21	PENALTY SYSTEM	11
22	TIME LIMITS	11
23	PROTESTS AND REQUESTS FOR REDRESS	12
24	ARBITRATION	12
25	HANDICAPS	12
26	SCORING	13
27	RESULTS	14
28	START BOAT DUTY	14
29	SAFETY REGULATIONS	14
30	RUBBISH DISPOSAL	15
31	RADIO COMUNICATION	15
32	USE OF AUXILIARY POWER	16
33	SETTING AND SHEETING SAILS	16
34	DISCLAIMER OF LIABILITY	16
	APPENDIX A: COMMERCIAL SHIPPING	18
	APPENDIX B: TOWNSVILLE YACHT CLUB SAILING CODE OF CONDUCT	20
	APPENDIX C: 2025 SCHEDULE OF RACES	21
	APPENDIX D: 2025 SCHEDULE OF SOCIAL AND OTHER EVENTS	22
	APPENDIX F: COURSES	24
	APPENDIX G: HEARING REQUEST FORM	26
	APPENDIX H: REQUIREMENTS FOR FIXED MARK – LONG RACES	27
	APPENDIX I: INCIDENT / ACCIDENT REPORTING	29

1 RULES

- 1.1 The Organising Authority (OA) for races in the 2026 sailing season is the Townsville Motor Boat and Yacht Club Limited, trading as Townsville Yacht Club (TYC). The OA's address is PO Box 484, Townsville QLD 4810, Australia.
- 1.2 All races in the 2026 sailing season will be governed by the Rules as defined in the 2025 – 2028 Racing Rules of Sailing (RRS), RRS [Appendix WP](#), and the Special Regulations and Prescriptions of Australian Sailing, all as modified by the Notice of Race and these Sailing Instructions.
- 1.3 Nothing in these Sailing Instructions relieves a boat of her responsibility under civil law to comply with the International Regulations for Preventing Collisions at Sea (IRPCAS) or local regulations.
- 1.4 Competing boats shall keep clear of commercial vessels at all times (see Appendix A).
- 1.5 Skippers shall ensure that they, their crew and their guests conform at all times to the Townsville Yacht Club Sailing Code of Behaviour (see Appendix B).

2 DEFINITIONS

- 2.1 Where words or expressions are used in these Sailing Instructions and they are defined in the RRS, those words or expressions shall have the same meaning as attributed to them in the RRS.
- 2.2 Definitions of other terms are as follows:
 - a) Sailing Committee: The committee with delegated authority from the TYC Board to organise yacht racing, training and social events at TYC.
 - b) Race Director: Member of the Sailing Committee responsible for setting courses and providing guidance to the Race Committee and Officer of the Day.
 - c) Race Committee: The people representing a boat which has been rostered to perform start and finish boat duty on a particular day.
- 2.3 Officer of the Day: The Officer of the Day shall have all final decision with consultation with Race Director and start boat crew.
 - a) Novice Helm: A person who is not a boat's regular helmsperson and whose experience as a helm on any boat whilst racing is no more than 6 races within the last two years, or a person not satisfying the first part of this definition who has received approval from the Sailing Committee prior to the race. The Novice helm is to be nominated on the Monday prior to the race, so that the Sailing Committee can approve eligibility by Thursday.

3 BOAT REGISTRATION

A TYC BOATS REGISTRATION

- 3.1 [DP] Boats determined by the OA to be not complying with the following registration requirements may incur a scoring penalty as defined in RRS 44.3(c) without a hearing in each race after they have been notified of the non-compliance until the non-compliance is rectified; this changes RRS A5.1.
- 3.2 All boats competing in the 2026 Sailing Season shall be registered with the TYC.
- 3.3 To register, owners or skippers shall supply:
 - a) A completed boat registration in SailSys.
 - b) The appropriate safety inspection form(s) completed by the owner or representative: the 2024 Australian Sailing Special Regulations Equipment Audit Form – Category 5 (for all races) and the 2026 TYC Equipment Audit Form – Category 5+ to enter Fixed Mark – Long

races. These forms can be obtained from the TYC office, the Safety Officer, or the TYC website.

- c) A copy of their current racing insurance policy, showing race cover appropriate to the distance of race and providing at least \$10 million of public liability. The insurance policy must be issued by an agency or underwriting agent that is licensed to operate in Australia under the Australian Prudential Regulation Authority (APRA).
- d) The annual boat registration fee of \$40 inclusive of GST, which can be paid in SailSys

3.4 Registration can be completed online using SailSys or the TYC website, at the pre-season briefing, or at the TYC office if you need assistance. We recommend registering your boat on SailSys prior to the season briefing. Registrations must be completed 7 days prior to your first race.

3.5 All owners and skippers of boats registered to race with the TYC shall be Sailing Members of Townsville Yacht Club.

3.6 Each boat's sail number shall be notified to the TYC. Sail numbers shall be displayed at all times. Alternative sail numbers shall be registered with the TYC.

B VISITING BOATS REGISTRATION

3.7 Visiting boats shall lodge a copy of a current safety certificate and racing insurance policy number before entering a TYC race.

3.8 Visiting boats shall compete in no more than three TYC races in a season before completing a full TYC sailing season registration.

4 RACE ENTRY

4.1 Boats may enter a TYC race after completion of the relevant registration process.

4.2 TYC boats shall fly the appropriate divisional flag (see section 11) prior to and during all races as identification to the Race Committee and other competitors.

4.3 Visiting boats shall fly their Club Burgee (in Racing Division) or appropriate divisional flag (see section 11) to signify their participation in a TYC event.

4.4 Except where there is a separate notice of race, entries for all TYC races shall be lodged where possible using the SailSys online system. Alternately, entries may be lodged in person at the TYC office.

4.5 Each entry shall be accompanied by the appropriate entry fee. Entry fees are:

- a) Bulk entry fee paid in advance to cover all races during the year: \$300 (\$340 including Boat Registration in SailSys);
- b) Online entry fee for an individual race paid through SailSys: \$20; or
- c) In person entry fee for an individual race paid at TYC: \$20.

4.6 For the Novice Helm series, entry fees are:

- a) Online entry fee for an individual race paid through SailSys: \$20; or
- b) In person entry fee for an individual race paid at TYC: \$20.
- c) If you pre register for all four races, prior to the first race, you get 1 entry fee free: \$60

4.7 For the Knobel Cup series, entry fees are:

- a) Online entry fee for an individual race paid through SailSys: \$20; or

- b) In person entry fee for an individual race paid at TYC: \$20.

4.8 For the “Well Hung Two Handed Series” (Presented by Well Hung Glass and Aluminium) series, entry fees are:

- a) Online entry fee for an individual race paid through SailSys: \$20; or
- b) In person entry fee for an individual race paid at TYC: \$20.
- c) If you pre register for all four races, prior to the first race, you get 1 entry fee free: \$60
- d) 7 days prior to the first race, must advise if using auto Helm or not, and Spinnaker or Non Spinnaker, so handicaps can be calculated.

4.9 [DP] Entrants (skippers and all crew) shall provide information requested by TYC to satisfy any current Queensland Health requirements. Failure to do so may result in the boat incurring a scoring penalty as defined in RRS 44.3(c) without a hearing; this changes RRS A5.1.

4.10 A registered boat may enter at any time until the warning signal of the race.

4.11 Should any owner or skipper wish to withdraw from a race his/her entry fee will not be refunded.

5 CREW MEMBERSHIP

5.1 [DP] Boats determined by the OA to be not complying with the following membership requirements may incur a scoring penalty as defined in RRS 44.3(c) without a hearing in each race after they have been notified of the non-compliance until the non-compliance is rectified; this changes RRS A5.1.

5.2 All crew members participating in a race shall be a TYC Sailing Member or the holder of a valid Australian Sailing SailPass.

5.3 Any crew member who is not a TYC Sailing Member can participate by purchasing a SailPass for each race day in which they participate at TYC.

5.4 SailPass can be purchased for a maximum of 5 race days at a cost of \$15 each. After competing in 5 race days, the crew member must become a TYC Sailing Member, with the value of purchased SailPasses being credited to the membership.

5.5 All skippers and crew participating in any race shall be registered with the TYC. Crew registration must be completed online using SailSys.

6 NOTICES TO COMPETITORS

6.1 Notices to competitors may be posted on the TYC Sailing notice board, located at the Anthony Street entrance to the Townsville Yacht Club.

6.2 Notices to competitors will also be circulated via email, text message, and/or the TYC Sailing Facebook page.

6.3 Should there be a conflict, the final electronic notification shall control.

7 CHANGES TO SAILING INSTRUCTIONS

7.1 Any change to the Sailing Instructions will be posted on the TYC Sailing notice board at least two (2) hours before the start of the race affected, except that any change to the schedule of races will be posted by 5:00 p.m. on the day before it will take effect.

7.2 Any change to the Sailing Instructions will also be published via the TYC web site, email, text

message, and/or the TYC Sailing Facebook page.

- 7.3 Should there be a conflict, the final electronic notification shall control.
- 7.4 Changes to the Sailing Instructions made afloat will be indicated by the display of Code Flag 3rd Substitute accompanied by two sound signals. The change will be communicated orally on VHF channel 77 no later than 5 minutes before the race warning signal.

8 SIGNALS MADE ASHORE

- 8.1 Signals made ashore will be displayed from the main flagpole at the Townsville Yacht Club.
- 8.2 Signals will also be published via the TYC web site, email, text message, and/or the TYC Sailing Facebook page.
- 8.3 Should there be a conflict, the final electronic notification shall control.
- 8.4 When Flag AP is displayed ashore, '1 minute' is replaced with 'not less than 45 minutes' in the RRS Race Signals.

9 SCHEDULE OF EVENTS

- 9.1 The point score for the 2026 sailing season will be based on twenty races, grouped into four quarterly series of five races each (Tropical Series, Autumn Series, Winter Series, and Spring Series). Four race format series will be sailed, namely Buoy Course, Magnetic Island, Fixed Mark – Short, and Fixed Mark – Long, with five races in each format series.
- 9.2 A separate Novice Helm series of four races will be sailed; the scores from this series will not be counted in the Commodore's Cup. The Novice Helm series is intended to encourage participation and skills development of a boat's regular crew. In each of these races, a novice helm is to steer the boat from the warning signal until the boat has crossed the finish line. Owners and regular skippers are permitted to give advice and are responsible for the safety of the boat. The boat may be protested if anyone other than a novice helm is found to be steering at any time during the race, except that the owner or regular skipper may take the helm temporarily to prevent an emergency. A different person may be the novice helm for each race.
- 9.3 The Knobel Cup series will be based on three races from the Commodore's Cup series: one Buoy Race, one Fixed Mark – Short Race, and one Fixed Mark – Long race.
- 9.4 "Well Hung Two Handed Series" (Presented by Well Hung Glass and Aluminium). A separate Two Handed series of four races will be sailed; the scores from this series will not be counted in the Commodore's Cup. The Two Handed series is intended to encourage participation. Must advised if doing auto Helm or not, and spinnaker or non spinnaker so handicaps can be calculated 7 days prior to first race. No changes are to be made after the first race.
- 9.5 The schedule of races is included as Appendix C.
- 9.6 The schedule of social and other events is included as Appendix D.
- 9.7 The Sailing Committee may make changes to these schedules at any time. Any changes shall be notified to competitors (see section 7).

10 PRIZES

- 10.1 Prizes for 1st place, 2nd place, and 3rd place will be awarded for:
 - a) Each quarterly series (Tropical Series, Autumn Series, Winter Series, and Spring Series).
 - b) Each format series (Buoy Course, Magnetic Island, Fixed Mark - Short, and Fixed Mark – Long).

- c) Knobel Cup.
- d) The Commodore's Cup.
- e) "Well Hung Two Handed Series" (Presented by Well Hung Glass and Aluminium) Two Handed

10.2 In the Novice Helm Series, the winner will be awarded the "Ian Hamilton Trophy"; additional prizes may be awarded depending on the number of starters.

10.3 Additional prizes may be awarded at the discretion of the Sailing Committee.

11 DIVISIONS AND FLAGS

11.1 If there are more than three (3) Cruising, Multihull, or Trailer Sailor boats nominated for the race, the Officer of the Day may start them in a separate Division.

11.2 The class flag for each division shall be as follows:

Division	Class Flag
Racing	TYC Burgee
Cruising	Pink Flag
Multihull	Yellow Flag
Trailer Sailor	Purple Flag

12 RACING AREA

12.1 The racing area is shown in Appendix E.

13 THE COURSES

13.1 Courses are described in Appendix F.

14 SAILING THE COURSE

14.1 For Fixed Mark courses utilising waypoints as turning points in the course, boats shall be able to prove they have sailed the course. Such evidence, which must be kept for at least 24 hours after the expiry of the race time limit, may be provided by any one of:

- a) A recorded track from a software app such as Boat Beacon or Navionics.
- b) A recorded track exported from the boat's primary GPS or chart plotter.
- c) A photograph of the boat's primary GPS or chart plotter showing the boat's position as it rounds the waypoint.

14.2 All GPS positions recorded by boats to meet the requirement of SI 14.1 shall use the WGS 84 datum.

14.3 After each race using waypoints, three boats may be chosen at random to provide evidence of sailing the course.

14.4 [DP] A boat that fails to provide the evidence of sailing the course required by SI 14.1 when requested to do so by the Sailing Committee or a protest committee may be penalised without a hearing. The penalty will be a 2% time penalty applied to the boat's elapsed time. A boat so penalised shall be entitled to a hearing on request. This changes RRS 63.1.

14.5 A boat shall broadcast its position in all Magnetic Island and Fixed Mark – Long races. The Race Director may nominate that a boat shall broadcast its position in other races; this requirement will be notified on the TYC Sailing notice board. Positions shall be broadcast throughout the race and

until the boat is safely back at its berth.

- 14.6 When a boat is required to broadcast its position, it may do so using an AIS transmitter or Boat Beacon software.
- 14.7 [DP] A boat that fails to broadcast its position when required may be penalised without a hearing. The penalty will be a 2% time penalty applied to the boat's elapsed time. A boat so penalised shall be entitled to a hearing on request. This changes RRS 63.1.

15 MARKS

- 15.1 The marks for all Buoy Course races will be large orange marks, large yellow marks or TYC mark G; for all other races the rounding marks are described in Appendix F.
- 15.2 In the event of a change of course after the start of a Buoy Course race, or for any other reason causing the non-availability of such marks, the Officer of the Day may, without notice, replace marks with orange or yellow inflatable marks. Such smaller marks may be used as start and finish marks.

16 THE START

- 16.1 All races will be started using RRS 26.
- 16.2 The standard starting line will be between the signal mast displaying an orange flag on the race committee vessel at the starboard end and an inflatable TYC buoy at the other end.
- 16.3 The Race Officer or Officer of the Day may set a staggered (pursuit) start. Start times will be published on the TYC Sailing notice board and may be signalled by the race committee vessel. The starting line for a staggered start may be defined as a transit from fixed marks.
- 16.4 For Buoy Course races, the direction of rounding the marks will be indicated by the race committee vessel displaying either a green (starboard rounding) or a red (port rounding) flag prior to and during the start sequence.
- 16.5 At the discretion of the Race Director or Officer of the Day, the Race Committee may use a gate start. The rabbit's boat name and/or sail number for the race shall be designated on the TYC Sailing notice board. This boat will be the rabbit for all races on the day unless otherwise instructed by the Officer of the Day. The rabbit will do a count down over the radio for the 5 minute signal, the 4 minute signal and may do the 1 minute signal. Within 20 seconds of the starting signal, the rabbit shall round behind the starting line pin end mark on a close-hauled port tack course and raise the 'P' flag or make a sound signal. The other boats shall start on starboard tack between the transom of the rabbit and the starting mark, after the starting signal. All boats starting must keep clear of the rabbit. Any boat failing to do so shall be scored DSQ for that race and any subsequent re-starts; this changes RRS A5.1. The rabbit will nominate a reasonable time for the gate to be open after the number of starters is known. After the nominated time (or once all boats have started, if earlier), the rabbit will lower the 'P' flag or make a sound signal and is then free to tack.
- 16.6 An inner limit mark (barging buoy) may be laid, in which case boats are required to pass the inner limit mark to starboard. Such an inner limit mark might not be positioned exactly on the starting line.
- 16.7 The race committee vessel may hold position using engines. This shall not be grounds for redress. This changes RRS 60 & 61.
- 16.8 [DP] Before the first warning signal of the first race of the day, all competing boats shall notify the Race Committee of their intention to start and the number of persons aboard for that race by calling the Race Committee on VHF channel 77 and be acknowledged by the Race Committee. Any boat not complying with this requirement may be given a scoring penalty calculated as stated in

RRS 44.3(c) without a hearing; this changes RRS A5.1.

- 16.9 A boat starting later than 30 minutes after her starting signal will be scored DNS unless approval has been received from the Race Committee prior to the starting signal.
- 16.10 Boats whose warning signal has not been made shall avoid the starting area.
- 16.11 The start area for races started away from Townsville will also be designated as 'S' in the course.
- 16.12 For all races other than the Buoy races, The Race Director or Officer of the Day may add a Clearing Buoy (CLBY) as the first mark to provide a first leg to windward. A red or green flag shall be flown from the start boat indicating the rounding.

17 RECALLS

- 17.1 In addition to the requirements of RRS 29, the Race Committee may call boats on VHF channel 77 to advise they have been recalled.
- 17.2 The absence of a radio recall shall not prevent a boat from being scored OCS.

18 CHANGE OF THE NEXT LEG OF THE COURSE

- 18.1 To change the position of the next mark, the Race Committee will lay a new mark (or move the finishing line) and remove the original mark as soon as practicable. Any mark to be rounded after rounding the new mark may be relocated to maintain the original course configuration. When, in a subsequent change, a new mark is replaced, it will be replaced by an original mark.
- 18.2 A change of course will be signalled before the leading boat has begun the leg, although the new mark may not yet be in position. The change will be signalled by an official boat or a buoy, situated near the mark beginning the leg being changed and displaying code flag "C" and the approximate compass bearing to the new mark. A repetitive sound signal may be made if practical (this changes RRS 33).

19 SHORTENING THE COURSE

- 19.1 The Race Committee may shorten any course at a rounding mark (or at any readily identifiable landmark for Magnetic Island or Fixed Mark races) by displaying Code Flag "S" and making two sound signals. An announcement may be made on VHF Channel 77. The race committee vessel will display the blue finish flag. Boats shall finish between the rounding mark and the race committee vessel; this may change the required side of the mark.
- 19.2 If a race committee vessel is not available, the Race Director or Officer of the Day may define the finish line by specifying a bearing to a rounding mark (or any readily identifiable landmark for Magnetic Island or Fixed Mark races). An announcement will be made on VHF Channel 77. This changes RRS 32.2.

20 THE FINISH

- 20.1 In all races having a designated finish at X (near to the entrance to the Breakwater Marina):
 - a) When the race committee vessel is in attendance, the finish line will be between the signal mast displaying a blue flag on the race committee vessel and the course side of the finishing mark, which will be an inflatable TYC buoy.

- b) When the race committee vessel is not in attendance, the finish line will be on the transit line through the red outer channel marker to the green outer channel marker of the Breakwater Marina, delimited by the green outer channel marker and a point 100m to the north-west. Boats shall take their own finish time from their primary GPS when they cross the line. This changes RRS Race Signals.

- 20.2 Where a boat has taken its own finish time, it shall submit the information as specified in the pre-race briefing.
- 20.3 For all Buoy Courses, the finish line will be between the signal staff displaying a blue flag on the race committee vessel and the course side of the finishing mark, which will be an inflatable TYC buoy.
- 20.4 After official sunset the finish mark will be a large TYC buoy with a white strobe light mounted on it.
- 20.5 When finishing at night:
 - a) Boats shall call the Race Committee on VHF Channel 77 when approximately one mile from the finish line.
 - b) Crews shall illuminate the boat's sail number with a torch while crossing the finishing line.
 - c) Boats shall call the Race Committee and identify themselves as the boat crosses the line. If the boat is close astern or close ahead of another boat, this information should be included in the message to the Race Committee.
- 20.6 The Race Committee will monitor VHF Channels 77 and 16. Boats finishing shall attempt to call the Race Committee on VHF Channel 77 first before using Channel 16.
- 20.7 [DP] Boats retiring from a race shall inform the Race Committee at the earliest opportunity on VHF channel 77 or in person to the Race Director, Officer of the Day or Handicapper. Failure to do so may result in the boat incurring a scoring penalty calculated as defined in RRS 44.3(c) without a hearing; this changes RRS A5.1.
- 20.8 The race committee vessel may hold position using engines. This shall not be grounds for redress. This changes RRS 60 & 61.

21 PENALTY SYSTEM

- 21.1 RRS 44.1 is changed so that the Two-Turns Penalty turn is replaced by the One-Turn Penalty.
- 21.2 A boat that has taken a penalty or retired after breaking RRS 31 or one or more rules of RRS Part 2 shall advise the Race Director, Officer of the Day or Handicapper as soon as possible and no later than two hours after finishing.

22 TIME LIMITS

- 22.1 The time limit will be:
 - a) for Magnetic Island Races held on Saturday: 2100 hrs;
 - b) for Fixed Mark– Short Races: 2100 hrs;
 - c) for Fixed Mark – Long races: 2200 hrs;
 - d) for Knobel Cup races: 2200 hrs; and
 - e) for Double race days the time limit for the 1st race Shall be 15 minutes before the scheduled start time for the 2nd race.
 - f) for all other races: sunset on the day of the race.

- 22.2 At the expiry of the time limit, the Race Committee will signal the expiry of the time limit by raising the appropriate class flag, making three sound signals, and notifying all boats still racing by calling them individually on VHF Channel 77.

23 PROTESTS AND REQUESTS FOR REDRESS

- 23.1 Protests and requests for redress shall be lodged within two (2) hours after the last boat finishes the last race of the day.
- 23.2 Hearing request forms shall be handed to the Officer of the Day or if out of Yacht Club hours, lodged within 1 hour of the Yacht Club opening on the following business day. A hearing request form template is included as Appendix G.
- 23.3 In the event of a hearing request form being lodged at the Yacht Club, the staff member receiving the form needs to record the time and date of lodgement and sign the form. The person lodging the form shall take all reasonable steps to notify the Officer of the Day that a hearing request form has been lodged at the Yacht Club and the name of the staff member given to.
- 23.4 Notices will be posted on the TYC Sailing notice board within 72 hours of the expiry of the protest time limit to inform competitors where and when there is a hearing in which they are parties to a protest or named as a witness. These notices are deemed to fulfil the requirements of RRS 63.21.
- 23.5 Protest hearings will be held at the Townsville Yacht Club at a time and date notified to all parties. The protest committee will make every effort to hear the protest within fourteen (14) days from the date of lodgement.
- 23.6 A list of boats that have acknowledged breaking RRS 42 or have been disqualified by the Race Committee for breaking this Rule will be posted before the protest time limit. These notices are deemed to fulfil the requirements of RRS 60.2.
- 23.7 In accordance with RRS 64 for a breach of a Rule of RRS Part 2, the protest committee may award a disqualification, a scoring penalty, or a time penalty. For all other Rules the penalty will be at the discretion of the protest committee which may include no penalty.

24 ARBITRATION

- 24.1 For protests involving an alleged breach of a rule of RRS Part 2, a short arbitration hearing (RRS Appendix T) may be held prior to a protest hearing. This changes Part 5, Section B.
- 24.2 The arbitrator may be a member of any subsequent protest committee or may observe and give evidence to the protest committee.

25 HANDICAPS

- 25.1 The handicap system will be based on past performance of each boat.
- 25.2 Handicaps will be calculated using the SailSys performance handicap system (PHS).
- 25.3 The Handicapper may amend a computer calculated handicap if:
- a) the initial handicap allocated to a competitor is deemed to be incorrect, or
 - b) the computer-generated handicap correction is deemed to be grossly insufficient or excessive.
- 25.4 The Handicapper will rely on a computer calculated handicap wherever possible and will only use SI 25.3 if absolutely necessary.
- 25.5 The decision of the Handicapper or their representative on any handicap matter will be final and

will not be cause for requests for redress. This changes RRS 61.

- 25.6 [DP] Boat owners and/or skippers must notify the Handicapper or the Measurer immediately of any adjustments to their boats, sails or rigging or ballast which may alter the boat's performance. This includes the addition or removal of heavy objects such as spare sails and anchors and chains. Failure to do so may result in disqualification from the race. If, after a proper hearing, the protest committee is of the opinion that a deliberate attempt has been made to improve the boat's performance in breach of the RRS Fundamental Rules, it may disqualify the owner, skipper, or crew members from sailing with TYC for a period of time. The Measurer or Handicapper shall have the right to inspect any boat at any time without notice in order to enforce this rule.

26 SCORING

- 26.1 Scoring will be as per RRS Appendix A.

- 26.2 Penalty scores will be allocated as follows (this changes RRS A5.3):

- a) Any boat that did not start (DNC, DNS, or OCS), did not sail the course (NSC), or is disqualified (DSQ or DNE) will be scored points equal to the number of starters plus two (2).
- b) Any boat that did not finish (DNF) or retires before or after finishing (RET) will be scored points equal to the number of starters plus one (1).
- c) Any boat still racing when her time limit expires (TLE) will be scored points equal to the number of boats finishing within the time limit plus 1.

- 26.3 Each quarterly series consists of five races, with three completed races constituting a series. If all five races are completed in a series, each boat's quarterly series score will be calculated in accordance with RRS A2.1; if less than five races are completed, all race scores will count.

- 26.4 Each format series (Magnetic Island, Buoy Course, Fixed Mark - Short, and Fixed Mark - Long) consists of five races, with three completed races constituting a series. If all five races are completed in a series, each boat's series score will be calculated in accordance with RRS A2.1; if less than five races are completed, all race scores will count.

- 26.5 On days designated as Buoy Course races, the Officer of the Day may hold a series of short sprint races. If fewer than three races are held, all races on that day will count towards a total score for that day's Buoy Course race; if more than three races are held, a boat's total score will exclude her worst result.

- 26.6 The Commodore's Cup consists of all scheduled races, with 10 completed races constituting a series. A boat's score for the Commodore's Cup shall be:

- a) when 20 races have been completed, the total of her race scores excluding her four worst scores.
- b) when from 15 to 19 races have been completed, the total of her race scores excluding her three worst scores.
- c) when from 10 to 14 races have been completed, the total of her race scores excluding her two worst scores.

- 26.7 The Novice Helm series consists of four races, with scores from three races to count.

- 26.8 The Knobel Cup series consists of three races. Scores from all completed races will count.

- 26.9 The "Well Hung Two Handed Series" (Presented by Well Hung Glass and Aluminium) series consists of four races, with scores from three races to count.

27 RESULTS

- 27.1 Every effort will be made by the Race Committee to calculate and announce race results as soon as reasonably practicable after the race.
- 27.2 Results will be available in the SailSys race management system.
- 27.3 Results are provisional until confirmation that all race requirements under these Sailing Instructions have been met.

28 START BOAT DUTY

- 28.1 Every boat shall provide a crew on their allocated day/s to act as the Race Committee for start and finish duty. This changes RRS 89.2.
- 28.2 For fulfilling start and finish duty, the boat will be scored first place for that race unless (once start duty requirements have been met) that boat also chooses to race for the day. If choosing to race, the boat will forfeit the first place given for start and finish duty and accept the place achieved on the day.
- 28.3 The Race Director shall appoint the Officer of the Day for each race. The Officer of the Day shall have all final decision with consultation with Race Director and start boat crew.
- 28.4 [DP] If due to unforeseen circumstances a boat is unable to perform start and finish duty on their allocated day, the owner or skipper shall notify the Sailing Committee and arrange an alternative crew to perform start and finish duty. Boats which fail to fulfil this obligation may be scored a discretionary penalty (DP) equal to the number of starters plus three (3). This changes RRS A5 and A10.
- 28.5 Where the schedule of races published on the TYC website states “TYC – Volunteer” for Start Duty volunteers are needed for these races or they may not go ahead.

29 SAFETY REGULATIONS

- 29.1 [DP] Any boat determined by the OA to be non-compliant with the following safety regulations may incur a scoring penalty as defined in RRS 44.3(c) without a hearing for each race after they have been notified of the non-compliance until the non-compliance is rectified; this changes RRS A5.1.
- 29.2 All boats shall comply with Maritime Safety Queensland regulations.
- 29.3 All competing boats shall comply with Australian Sailing Special Regulations Part 1 Category 5 for all races. Additional equipment, itemised in Appendix H, shall be carried for Fixed Mark – Long races.
- 29.4 All competitors shall be familiar with their obligations under the TYC Incident Management Plan, especially as it relates to their role as part of a Race Committee.
- 29.5 Safety Inspection Sheet
 - a) A copy of the safety inspection sheet submitted with registration shall be onboard the boat at all times.
 - b) Inspections will be carried out in accordance with Rule 2.02 of the Australian Sailing Special Regulations Part 1 for Racing Boats.
 - c) Visiting boats shall be required to comply with these requirements.
- 29.6 The Race Director or Officer of the Day may require boats to have “Boat Beacon” or a registered AIS system on board and transmitting for the duration of any race and up until the boat is at dock or safe anchorage.

- 29.7 All boats shall carry a VHF radio capable of communicating on channels 16, 22, 67 and 77; the radio may be fixed mount or a waterproof handheld.
- 29.8 Boats shall perform a sail past in front of the Race Committee with each crew member wearing a lifejacket prior to the start of the boat's first race.
- 29.9 All boats shall carry sufficient fuel at the start of each race for two hours of motoring.
- 29.10 The Safety Officer or Sailing Committee may inspect any boat at any time for compliance with safety regulations.
- 29.11 The Race Committee will not conduct Novice Helm Races true wind speed of 25 knots or above has been sustained for a period of 5 minutes.
- 29.12 The Race Committee may conduct Commodore's Cup series races in a strong wind warning. However, they will cancel should a gale warning be imminent or forecast. Owners should check their insurance coverage under these circumstances before and during the race.
- 29.13 In the event of any incident causing damage to boats or serious injury to persons, the skipper is required to submit a completed Incident Report to the Officer of the Day and Maritime Safety Queensland (MSQ) as soon as possible after racing has finished. See Appendix I.
- 29.14 Any contact with "Aids to Navigation" must be reported to MSQ by the skipper.
- 29.15 The person in charge of each boat is responsible for the safety of the boat and her crew as specified in AS Special Regulations Part 1 for Racing Boats.
- 29.16 It is strongly recommended that a lifejacket be worn by each member of the crew at times such as, but not limited to: at night, when alone on deck, when the true wind speed is 25 knots or above, or when visibility is less than 1 nautical mile. This changes Regulation 5.01.1(h).
- 29.17 It is recommended that anchors are removed from the bow while racing. However, if the anchor is left on the bow, a second, strong method of attachment shall be used.

30 RUBBISH DISPOSAL

- 30.1 The disposing of non-biodegradable waste from a competing boat is not permitted. A successful protest based on this rule will result in disqualification of the offending boat. This changes RRS 47.

31 RADIO COMMUNICATION

- 31.1 The Race Committee may broadcast the course to be sailed, names/sail numbers of OCS boats, and/or other information of interest to competitors on VHF channel 77. The Race Committee may also transmit course information by Short Message Service (SMS). Any failure of, or defect in, such a broadcast or transmission will not be grounds for redress. This changes RRS 61.
- 31.2 The Race Director or Officer of the Day may specify that a VHF radio schedule (sked) will be conducted during longer courses.
- a) The Race Director or Officer of the Day will nominate the vessel / person / authority to which schedule reports are to be made (Race Control).
 - b) Each boat shall call Race Control for a radio check before the start of the radio schedule to ensure there are no problems in communication.
 - c) Race Control will call all competing boats on Channel 22 at the times listed below. Boats will be called in alphabetical order.
 - d) Call times will be 1603 hours; 1903 hours; 2203 hours; and so on at three (3) hourly intervals until the race finishes.

- 31.3 Competitors shall be brief and specific in their reports. The information required is the name of the boat, the position and relevant time.
- 31.4 Boats deriving their position from GPS shall advise that the position reported was by a GPS fix. Boats not using GPS may (if they wish) give their position as a distance and bearing to (not from) a major land feature or navigation beacon (e.g. boat "Petal", Cape Cleveland light bearing 140 degrees true, distance four miles at 1133 hours).
- 31.5 If a boat has not confirmed her position during the organised radio sked time on Channel 22 or has been unable to give her position by relaying through another boat, she shall call Race Control using Channel 22 thirty (30) minutes after the nominated radio sked time.
- 31.6 If a boat fails to communicate either directly or indirectly via relay for two (2) consecutive skeds then:
- a) At the end of the second missed sked all competing boats will be asked if they can confirm the position of the boat.
 - b) If no boat can confirm their position, the boat closest to that boat based on tracker position or, if the tracker is not working, the boat closest to the calculated present position of the boat who has missed the skeds, will be asked to try to contact them and report back to Race Control via radio or mobile phone within 10 minutes.
 - c) If there is no response then the boat will be deemed as being missing.
- 31.7 Boats missing two (2) consecutive schedules may be protested by the Race Committee and may also be subject to a Search and Rescue event.
- 31.8 Boats that can hear another competitor attempting unsuccessfully to contact Race Control shall relay the competitor's position to Race Control.
- 31.9 Retired boats shall continue with the schedules until they advise Race Control of their arrival at a safe port or haven.

32 USE OF AUXILIARY POWER

- 32.1 A boat may use prohibited propulsion after its Preparatory Signal to arrive at the start line, provided it shall cease using such propulsion 100 meters prior to the pre-start side of the start line. It shall immediately carry out a 720° turn under sail while keeping clear of all other boats and, if the start signal has been made, start. This changes RRS 42.1.
- 32.2 A boat taking advantage of this concession shall satisfy the Race Committee that it has not obtained any unfair advantage.

33 SETTING AND SHEETING SAILS

- 33.1 Fixed and retractable spinnaker poles and bowsprits will be permitted for the purpose of setting asymmetrical spinnakers. This changes RRS 55.2 and 55.3.
- 33.2 A retractable pole or bowsprit shall be fully retracted at all times except when the spinnaker is being set, is set, or is being retrieved, and shall be retracted at the first reasonable opportunity after the spinnaker is fully retrieved.
- 33.3 Approaching a mark at which the spinnaker will be set, a retractable pole or bowsprit shall not be extended until the boat is in the zone.

34 DISCLAIMER OF LIABILITY

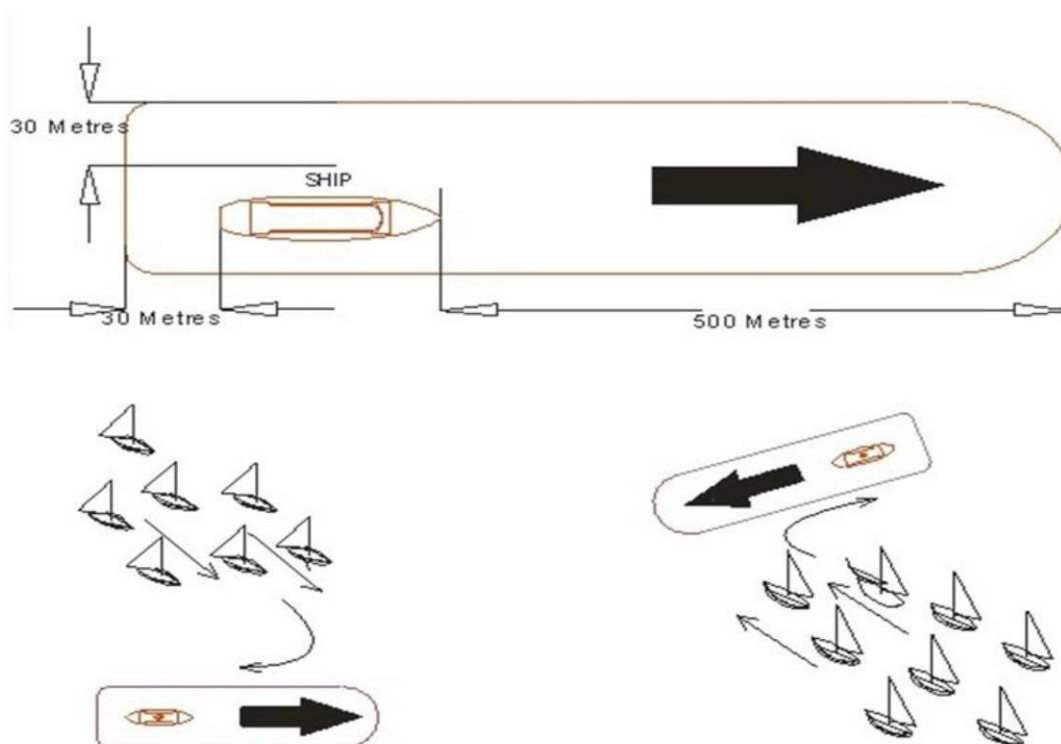
- 34.1 All those taking part in these races do so at their own risk and responsibility. Neither TYC nor any other club or company connected with the organising of these races is responsible for the seaworthiness of a boat whose entry is accepted, nor for the sufficiency or adequacy of its

equipment. Owners shall accept full responsibility for the seaworthiness and safe navigation of their boats and competence of their crews.

- 34.2 Boat owners, skippers and crew should be aware that there may be uncharted obstacles under the waters on which races are held. Such uncharted obstacles include reefs, bomboras and rocks which could be a danger to boats and crews. TYC accepts no responsibility for any damage to or loss of any boat or for injury to or death of any crew person which may occur as a result of a collision with any underwater obstacle. All participants compete in races at their own risk.
- 34.3 RRS 3 states: 'The responsibility for a boat's decision to participate in a race or to continue to race is hers alone.' By participating in this event each competitor agrees and acknowledges that sailing is a potentially dangerous activity with inherent risks. These risks include strong winds and rough seas, sudden changes in weather, failure of equipment, boat handling errors, poor seamanship by other boats, loss of balance on an unstable platform and fatigue resulting in increased risk of injury. Inherent in the sport of sailing is the risk of permanent, catastrophic injury or death by drowning, trauma, hypothermia or other causes.

APPENDIX A: COMMERCIAL SHIPPING

1. Boats shall not interfere with commercial shipping in the Platypus Channel and shall not approach closer than 30m on either side or astern or 500m ahead of any commercial ship. This is deemed a Ship Activated Exclusion Zone and is considered Prohibited Water (obstruction).
2. Commercial ships may be escorted by a Pilot vessel. Competing boats shall not obstruct escort vessels, cause them to move station or collide with them. Competing boats shall obey all instructions of an escort vessel and shall not pass between the ship being escorted and the escort vessel. Complying with an instruction of an escort vessel shall not be grounds for redress under RRS 61. Any boat observed by the Race Committee to breach these requirements or against whom a complaint is received from Townsville Port Authority, or the Master of a commercial vessel may be subject to action by the Race Committee or protest committee under RRS Part 5, Section A.



3. In complying with MSQ Rules, due regard shall be had to all dangers of navigation and collision and to any special circumstances, including the limitations of the vessels involved, which may make a departure from the RRS necessary to avoid immediate danger.
4. A boat in a shipping channel that cannot manoeuvre safely and is in danger of hindering any commercial shipping shall use her engine to clear such shipping. The engine use must be logged and subsequently lodged with the Race Committee after finishing the race. The Race Committee will decide what penalties (if any) shall be applied. This changes RRS 42.
5. All Skippers are reminded of their responsibility under rule 9(b) of the IRPCAS: "A vessel of less than 20 metres in length or a sailing vessel shall not impede the passage of a vessel which can safely navigate only within a narrow channel or fairway."
6. When closing any vessel, to prevent being overrun ensure you remain within sight of the Master/Officer of the Watch on the vessel's bridge. Beware of overhanging bows and other parts of ship that might obstruct this line of sight. This means that your boat may disappear from sight inside 500m from the bows of large ships.

7. Shipping Sound Signal Meanings:

- One short blast – I am altering course to starboard.
- Two short blasts – I am altering course to port.
- Three short blasts – I am operating engines astern.
- Five (or more) short blasts – I'm unsure of your intentions and I doubt whether you are taking enough avoiding action to avoid collision.

APPENDIX B: TOWNSVILLE YACHT CLUB SAILING CODE OF BEHAVIOUR

All skippers and crew shall comply with the TYC Code of Conduct, available on the TYC website at [this link](#).

This code of conduct is to be read in conjunction with and in addition to the Townsville Yacht Club (TYC) Participation Rules, Safety Declaration, release and Indemnity and Acceptance of conditions for any event.

Social Media

All skippers and crew shall comply with the TYC Social Media Policy, available on the TYC website at [this link](#).

Responsible Service of Alcohol

A legal alcohol limit applies to all skippers on the water.

It is the responsibility of the skipper to maintain responsible service of alcohol on board his/her vessel and to keep crew and guest's alcohol levels at a safe and responsible level both on and off the water.

Environmental Protection

The environmental protection of our harbour and waterways is of vital concern to TYC and littering or discharge of waste material from a vessel is strictly forbidden.

Enforcement

Complaints and/or reports associated with this Code of Conduct may be referred to the Officer of the Day for consideration and, if applicable, disciplinary action.

APPENDIX C: 2026 SCHEDULE OF RACES AND RELATED EVENTS

DATE	DAY		START	RACE / EVENT	START DUTY
24 th Jan	Sat		1000	TYC Cruise to Magnetic Island	
26 th Jan	Mon		1030	Daybreak Rotary Strand Sail Past	
7 th Feb	Sat		1000	TYC Sailing Open Day	
12 th Feb	Thu		1800	2026 Season Briefing	
15 th Feb	Sun		1030	2026 Blessing of the Fleet	
	TROPICAL SERIES				
28 th Feb	Sat		1300	Magnetic Island Race 1	
7 th Mar	Sat		1300	Well Hung Two Handed Race 1	TYC Volunteers
14 th Mar	Sat		1300	Novice Helm Race 1	TYC Volunteers
21 st Mar	Sat		1300	Fixed Mark – Long Race 1	
29 th Mar	Sun		1100	Magnetic Island Race 2	
11 th April	Sat		1100	Fixed Mark – Short Race 1	TYC Volunteers
			1330*	Buoy Race 1	
	AUTUMN SERIES				
18 th April	Sat		1300	Fixed Mark – Long Race 2	
	Tropical Series Presentations				
9 th May	Sat	K	1200	Buoy Race 2 (Knobel Cup Race 1)	TYC Volunteers
		K	1500*	Fixed Mark – Short Race 2 (Knobel Cup Race 2)	
17 th May	Sun		1100	Magnetic Island Race 3	
23 rd May	Sat	K	1300	Fixed Mark – Long Race 3 (Knobel Cup Race 3)	
30 th May	Sat		Mariner’s Ball		
6 th Jun	Sat		1300	Novice Helm Race 2	TYC Volunteers
7 th Jun	Sun		1100	Well Hung Two Handed Series – Race 2	TYC Volunteers
	WINTER SERIES				
13 th Jun	Sat		1300	Fixed Mark – Short Race 3	
		Autumn Series Presentations			
20 th Jun	Sat		1300	Fixed Mark – Long Race 4	
27 th Jun	Sat		1100	Fixed Mark – Short Race 4	TYC Volunteers
			1330*	Buoy Race 3	
4 th Jul	Sat		Social Cruise to Herald Island		
19 th Jul	Sun		1100	Magnetic Island Race 4	
25 th Jul	Sat		1300	Novice Helm Race 3	TYC Volunteers
26 th Jul	Sun		1100	Well Hung Two Handed Series – Race 3	TYC Volunteers
	SPRING SERIES				
1 st Aug	Sat		1100	Fixed Mark – Short Race 5	TYC Volunteers
			1330*	Buoy Race 4	
	Winter Series Presentations				
15 th Aug	Sat		*TBC	TYC Social Race	TYC Volunteers?
19 th Sept	Sat		1300	Magnetic Island Race 5	
26 th Sept	Sat		1300	Novice Helm Race 4	TYC Volunteers
3 rd Oct	Sat		October Long Weekend Social Cruise		
10 th Oct	Sat		1300	Buoy Race 5	
17 th Oct	Sat		1300	Well Hung Two Handed Series – Race 4	TYC Volunteers
24 th Oct	Sat		*1100	Fixed Mark – Long Race 5 - Herald Island	TYC Volunteers
14 th Nov	Sat		TYC Sailing Presentation Night		

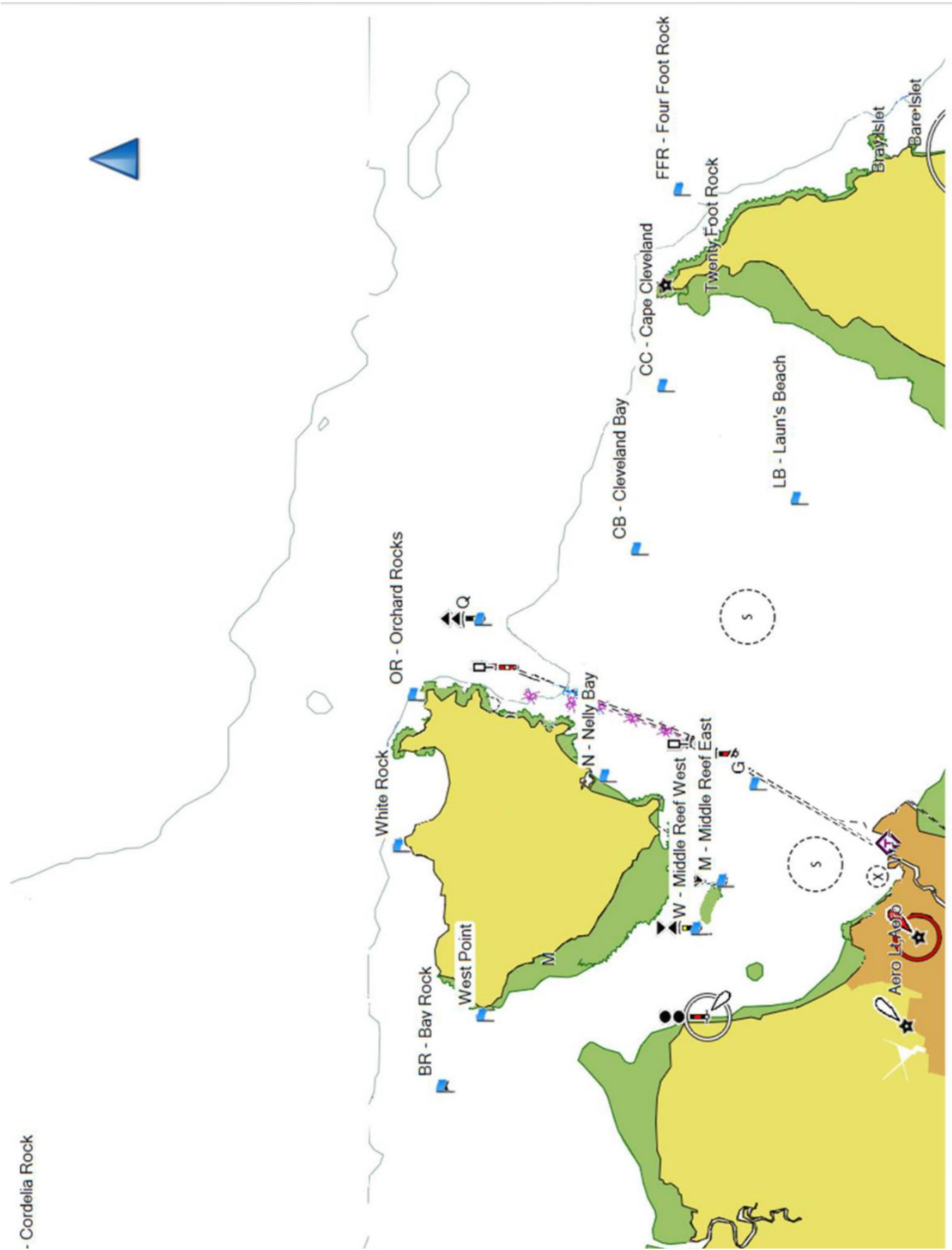
* Where 2 races are held on the same day, the start of the second race shall be no earlier than the time shown.

* Well Hung Two Handed Series (Presented by Well Hung Glass and Aluminium)

APPENDIX D: 2026 SCHEDULE OF SOCIAL AND TRAINING EVENTS

DATE	DAY	TIME	EVENT	COMMENTS
7 th Jan 2026	Wed	1700	Twilight Sailing Resumes	
21 st Jan	Wed	1200	JCU Market Day	
24 th Jan	Sat	1000	Australia Day Cruise to Maggie & Beach Sausage Sizzle	
26 th Jan	Mon	1000	Daybreak Rotary Sail Past the Strand	Rotary BBQ Party at TYC
31 st Jan	Sat	0930	ADF – Welcome to Townsville Expo	
1 st Feb	Sun	0900	Get Active Expo	
7 th Feb	Sat	1000	TYC Sailing Open Day	
12 th Feb	Thu	1800	Season Briefing	Mariner's Room (TYC)
15 th Feb	Sun	1000	Blessing of the Fleet	Registration Required
25 th Apr	Sat		Anzac Day Public Holiday	
18 th Apr	Sat		Tropical Series Presentations	Captain's Bar (TYC)
2 nd – 4 th May	Sat – Mon		Labour/May Day Long Weekend	
18 th – 23 rd May	Mon - Sat		Port Douglas Race Week	
30 th May	Sat	1830	TYC Mariners Ball	TYC
13 th June	Sat		Autumn Series Presentations	Captain's Bar (TYC)
23 rd June	Tue	1800	Townsville Yacht Club AGM	Mariner's Room (TYC)
4 th July	Sat		Social Cruise to Herald Island	
6 th July	Mon		Townsville Show Day Holiday	
1 st Aug	Sat		Winter Series Presentations	Captain's Bar (TYC)
6 th – 13 th Aug	Thu – Thu		Airlie Beach Race Week	
5 th Aug	Sat	TBC	TYC Social Race	
15 th – 22 nd Aug	Sat – Sat		Hamilton Island Race Week	
27 th Aug–2 nd Sep	Thu - Wed		SeaLink Magnetic Island Race Week	
4 th – 6 th Sep	Fri – Sun		TYC GaLS Regatta	
3 rd Oct	Sat		Social Cruise - October Long Weekend	
3 rd – 5 th Oct	Sat – Mon		King's Birthday Long Weekend	
24 th Oct	Sat	1700	Herald Island BBQ	
14 th Nov	Sat	1830	TYC Sailing Presentation Night	
9 th Dec	Wed	1700	Christmas Twilight Sail	
23 rd Dec	Wed	1700	Last Twilight Sail of 2026	
6 th Jan 27	Wed	1700	Twilight Sailing Resumes 2027	

*We welcome all Vessels to participate



APPENDIX F: COURSES

The courses to be sailed may be shown on the TYC Sailing notice board prior to the race and shall be communicated by at least one of the following: radio transmission, electronic publication, or course flag displayed by the Race Committee prior to each race.

MAGNETIC ISLAND RACES

RACE	COURSE FLAG	COURSE
Port Course	Numeral 1	Start at S – Orchard Rocks (P) – White Rock (P) - West Point (P) - Finish at X
Starboard Course	Numeral 2	Start at S – West Point (S) – White Rock (S) - Orchard Rocks (S) - Finish at X

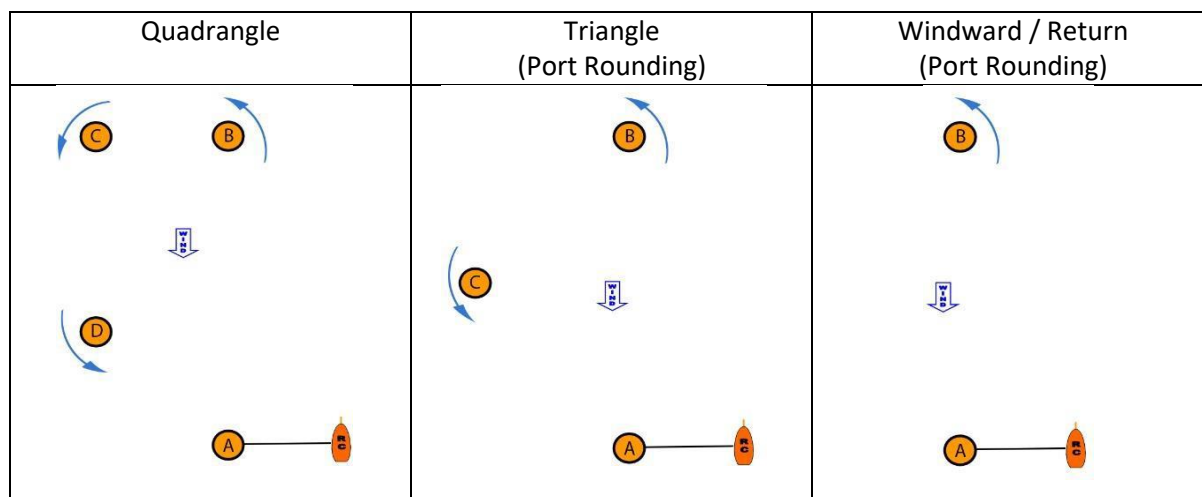
Notes:

- 1 The Race Director or Officer of the Day may add a Clearing Buoy (CLBY) as the first mark to provide a first leg to windward.
- 2 The Race Director or Officer of the Day may add Bay Rock and/or Q to the course.
- 3 Magnetic Island races may be conducted as a series of two races on the same day. Race 1 will start as per above courses and finish at a point to be determined by the Race Director or the Officer of the Day. Race 2 will start at the race 1 finish line and finish at X. Results will be based on the total score for each boat in race 1 and race 2.

BUOY COURSES

RACE	COURSE FLAG(S)	COURSE
Standard Quad Course	C	Start at A – B (P) – C (P) – D (P) – A (P) – B (P) – A (P) - Finish at B
Standard Buoy Courses	D + Red or Green	Start at A - B - C - A - B - A - B - C - Finish at A
Windward Return Buoy Course	E + Red or Green	Start at A - B - A - B - A - B - Finish at A
Sprint Quad Course	F	Start at A – B (P) – C (P) – D (P) – Finish at A
Sprint Triangle Course	G + Red or Green	Start at A - B - C - Finish at A
Sprint Windward Return Course	H + Red or Green	Start at A - B - Finish at A

Buoy courses are illustrated below.



Notes:

- 1 The course flag(s) displayed by the Race Committee will indicate the direction for mark rounding.

FIXED MARK COURSES

Fixed mark courses will be set based on forecast weather conditions and notified to competitors no later than four hours prior to the start.

Fixed marks which may be used to set a course are defined as follows:

BR	Bay Rock
CB	Cleveland Bay. Waypoint at GPS position 19° 10.530' S, 146° 55.76' E.
CC	Cape Cleveland. Waypoint at GPS position 19° 11.000' S, 146° 58.960' E.
CR	Cordelia Rock
FFR	Four Foot Rock
G	TYC Special Purpose Buoy adjacent to Platypus Channel marker P7
HI	Herald Island
LB	TYC Laun's Beach Buoy at 19° 13.400' S, 146° 56.750' E
M	Eastern Middle Reef Beacon
N	Eastern cardinal mark in Nelly Bay
OR	Orchard Rocks
Q	North Cardinal Beacon
W	Western Middle Reef Beacon
YL	Yabulu Light

Notes:

- 1 The Race Director or Officer of the Day may add a Clearing Buoy (CLBY) as the first mark to provide a first leg to windward.
- 2 All GPS positions specified above use the WGS 84 datum.

APPENDIX G: HEARING REQUEST FORM

Received Date:		Time:		By:		Protest Time Limit:		Case Number:	
1. Date of Race:			Series:			Race Number:			
2. TYPE of HEARING <input type="checkbox"/> Protest – (an allegation that one or more boats broke a rule) <input type="checkbox"/> Request for redress <input type="checkbox"/> Request to reopen a hearing (RRS 63.7)						<input type="checkbox"/> Request to have a hearing full jury (RRS N1.4(b)) <input type="checkbox"/> Report for DP Penalty (RRS 64) <input type="checkbox"/> Report concerning a Support Person <input type="checkbox"/> Report of Misconduct (RRS 69)			
3. MY DETAILS – The INITIATOR – the protestor, the person making the allegation, request or report									
Class/Fleet:		Sail No/Boat Name:		OR		Committee:			
Represented By:		Name:				Telephone:			
		e-mail:							
4. The RESPONDENT – protestee, committee for redress, support person, person reported for misconduct.									
Class/Fleet or Committee		Sail No/Boat Name/Person				Telephone (if known)			
5. INFORMING the PROTESTEE – If you are protesting, how did you inform the boat of your intention to protest? By hailing: <input type="checkbox"/> No <input type="checkbox"/> Yes Displaying Red Flag: <input type="checkbox"/> Not required <input type="checkbox"/> No <input type="checkbox"/> Yes Informed some other way: <input type="checkbox"/> No <input type="checkbox"/> Yes									
6. The INCIDENT When and Where? Brief Description.						Diagram (if relevant): Include wind and current.			
Rules that apply:						Names of witnesses:			

APPENDIX H: REQUIREMENTS FOR FIXED MARK – LONG RACES

Headings are from Australian Sailing's *2021 – 2024 Special Regulations Part 1 for Racing Boats*, where additional details of these requirements may be found. Special Regulations and Amendments can be downloaded from <https://www.sailingresources.org.au/safety/specialregs>.

Fixed Equipment

1. If the boat has lifelines, they must be continuous, fixed only at (or near) the bow and stern and permanently supported at intervals of not more than 2.2m; however, a gate on each side of the boat is permitted.
2. If the boat does not have lifelines, the crew shall wear lifejackets at all times and be clipped to the boat when on deck between the hours of sunset and sunrise.
3. Toilet or securely fastened bucket.
4. Bunks, securely installed and sufficient for 25% of the crew.
5. Cooking stove or heating appliance, capable of being safely operated in a seaway.
6. At least 2.5 litres of water per crew member shall be carried at the start of the race.
7. One manual bilge pump if the space below the floorboards precludes access of a bucket for bailing.
8. Unless permanently fitted, each bilge pump handle shall be provided with a lanyard or catch or similar device to prevent accidental loss.
9. Marine magnetic compass, independent of any power supply permanently installed.
10. Navigational lights that conform to the International Regulations for Prevention of Collisions at Sea, exhibited as required by those regulations.
11. Reserve navigational lights capable of being quickly mounted with a power supply independent of the boats main supply.
12. Recommended: Permanently installed DSC capable VHF transceiver.
13. Waterproof handheld VHF transceiver.
14. An emergency antenna where the regular antenna depends upon the mast.
15. At least two means of receiving weather bulletins.
16. Recommended: A permanently installed GPS.

Portable Equipment and Supplies

17. Clipping points attached to through-bolted or welded deck plates or other suitable and strong anchorage points adjacent to stations such as helm, sheet winches, and masts, where crew members work for long periods. Clipping points shall enable a crew member to clip on before coming on deck and unclip after going below. Whilst continuously clipped on, a crew member shall be able to move readily between the working areas on deck and the cockpit with the minimum of clipping and unclipping operations. There shall be sufficient clipping points enabling at least 50% of the crew to be simultaneously clipped on.
18. At least two fire extinguishers of a minimum 10B(E) rating, each of dry powder or equivalent.
19. The primary anchor shall be carried assembled and attached to the ground tackle. The primary anchor shall have a minimum chain length of 10m plus a length of rope (or chain) of 50m.
20. At least two flashlights, water resistant and floating type with spare batteries and bulbs (if they can be replaced).
21. Medical kit – Items listed for Cat 5 plus the following: triangular bandage, butterfly or steristrips (strips of 5) x 2, antiseptic skin solution, Normal saline 250ml, seasick tablets x 10.

22. Recommended: A depth sounder.
23. An emergency tiller capable of being fitted quickly to the rudder stock where the normal method of steering is other than by a strong tiller fitted directly to the rudder stock.
24. Crews must be aware of alternative methods of steering the boat in any sea conditions in the event of rudder loss. At least one method must have been proven to work on the boat.
25. A bosun's chair or climbing harness.
26. A lifebuoy (safety colour in the yellow - red range) with a self-igniting light within reach of the helmsperson and ready for instant use. Life buoy to be fitted with marine grade retroreflective material.
27. Two red parachute flares.

Personal Equipment

28. A lifejacket complying with AS4758-2008 (minimum Level 150), or an equivalent or more stringent overseas standard such as ISO 12402 – 3 (Level 150) or ISO 12402-2 (Level 275) for each crew member. Each lifejacket shall have marine-grade retroreflective tape and an attached whistle.

APPENDIX I: INCIDENT / ACCIDENT REPORTING

MARITIME INCIDENT OR ACCIDENT

It is mandatory that any incident that causes damage to property and/or serious injury to participants must be reported to *Maritime Safety Queensland* and the Officer of the Day as soon as possible after that incident has occurred. In the event that the Officer of the Day is unavailable, the Race Director must be notified. Contact details of the current Officer of the Day and Race Director will be posted on the TYC Sailing notice board.

The completed incident form is to be submitted to one of these officers as soon as practicable after the Incident.

The **INCIDENT REPORT form** can be downloaded from the MSQ website - [Marine Incident Report](#). A hard copy can be obtained from the Townsville Yacht Club office.

PERSONAL INCIDENT OR ACCIDENT

In the event that a participant is involved in an incident or accident that requires first aid and/or professional medical assistance the [Townsville Yacht Club Competitor Incident Form](#) is to be completed and given to either the Officer of the Day, the Race Director, or the Townsville Yacht Club office as soon as practicable after the event.