



TOWNSVILLE YACHT CLUB
Sailing

2021 SEASON NOTICE OF RACE AND PROGRAMME OF EVENTS

Version	Date	Note
0.1	23/11/2020	First draft.
0.2	25/11/2020	Second draft
0.3	10/12/2020	Third draft
1.0	11/12/2020	Submitted to TYC Board for approval
1.1	06/01/2021	Modifications following review by MV
1.2	15/01/2021	SailPass limits added. Revised Cat 5+ lifejacket requirement. Updated division flags requirement.
1.3	20/01/2020	SailPass limit amended.

Townsville Yacht Club
1 Plume Street
South Townsville QLD 4810
www.townsvilleyachtclub.com.au
(07) 4772 1192

Table of Contents

1	RULES	4
2	DEFINITIONS	4
3	BOAT REGISTRATION	4
4	RACE ENTRY	5
5	CREW MEMBERSHIP	6
6	SAILING INSTRUCTIONS	6
7	SCHEDULE OF EVENTS	6
8	PRIZES	7
9	DIVISIONS AND FLAGS	7
10	RACING AREA	7
11	HANDICAPS	7
12	SCORING	7
13	PENALTY SYSTEM	8
14	SAFETY REGULATIONS	8
15	SETTING AND SHEETING SAILS	9
16	DISCLAIMER OF LIABILITY	9
APPENDIX A:	2021 SCHEDULE OF RACES	11
APPENDIX B:	2021 SCHEDULE OF SOCIAL AND OTHER EVENTS	12
APPENDIX C:	RACING AREA	13
APPENDIX D:	REQUIREMENTS FOR FIXED MARK – LONG RACES	14

1 RULES

- 1.1 The Organising Authority (OA) for races in the 2021 sailing season is the Townsville Motor Boat and Yacht Club Limited, trading as Townsville Yacht Club (TYC). The OA's address is PO Box 484, Townsville QLD 4810, Australia.
- 1.2 All races in the 2021 season will be governed by the Rules as defined in the 2021 - 2024 Racing Rules of Sailing (RRS), RRS [Appendix WP](#), and the Special Regulations and Prescriptions of Australian Sailing, all as modified by this Notice of Race and the Sailing Instructions.
- 1.3 Nothing in this Notice of Race relieves a boat of her responsibility under civil law to comply with the International Regulations for Preventing Collisions at Sea (IRPCS) or local regulations.

2 DEFINITIONS

- 2.1 Where words or expressions are used in this Notice of Race and they are defined in the RRS, those words or expressions shall have the same meaning as attributed to them in the RRS.
- 2.2 Definitions of other terms are as follows:
 - 2.2.1 Sailing Committee: The committee with delegated authority from the TYC Board to organise yacht racing and social events at TYC. Current members and roles are listed on the TYC web site.
 - 2.2.2 Race Director: Member of the Sailing Committee responsible for setting courses and providing guidance to the Race Committee and Officer of the Day.
 - 2.2.3 Race Committee: The people representing a boat which has been rostered to perform start and finish boat duty on a particular day.
 - 2.2.4 Officer of the Day: The person nominated by the owner or skipper of the rostered boat to manage racing on the day.
 - 2.2.5 Novice Helm: A person who is not a boat's regular helmsperson and whose experience as a helm on any boat whilst racing is less than 10 races within the last three years, or a person not satisfying the first part of this definition who has received approval from the Sailing Committee prior to the race.

3 BOAT REGISTRATION

TYC SEASON REGISTRATION

- 3.1 Boats determined by the OA to be not complying with the following registration requirements may incur a scoring penalty as defined in RRS 43(c) without a hearing in each race after they have been notified of the non-compliance until the non-compliance is rectified; this changes RRS A5.1.
- 3.2 All boats competing in the 2021 Racing Season must be registered with the TYC.
- 3.3 To register, owners or skippers shall supply:
 - 3.3.1 A completed boat registration form.
 - 3.3.2 Crew registration forms.

- 3.3.3 The appropriate safety inspection sheet(s) completed by the owner or representative: 2017-2021 Special Regulations Equipment Audit Form – Category 5 (for all races) and the TYC Equipment Audit Form – Category 5+ to enter Fixed Mark – Long races. These forms can be obtained from the TYC office, the Safety Officer, or the TYC website.
- 3.3.4 A copy of their current racing insurance policy, showing race cover appropriate to the distance of race and providing at least \$10 million of public liability. The insurance policy must be issued by an agency or underwriting agent that is licensed to operate in Australia under the Australian Prudential Regulation Authority (APRA).
- 3.3.5 The annual boat registration fee of \$40 inclusive of GST.
- 3.4 Registration can be completed online using SailSys, at the pre-season briefing, or at the TYC office.
- 3.5 All owners and skippers of boats registered to race with the TYC must be Sailing Members of Townsville Yacht Club and hold a current Australian Sailing number.
- 3.6 Each boat's sail number shall be notified to the TYC. Sail numbers shall be displayed at all times. Alternative sail numbers must be registered with the TYC.
- 3.7 Boats registered with TYC shall fly the appropriate divisional flag (see section 9) prior to and during all races as identification to the Race Committee and other competitors.

VISITING BOATS REGISTRATION

- 3.8 Visiting boats must lodge a copy of a current safety certificate and racing insurance policy number before entering a TYC event.
- 3.9 Visiting boats shall fly their Club Burgee (in Racing Division) or appropriate divisional flag (see section 9) to signify their participation in a TYC event.

4 RACE ENTRY

- 4.1 TYC boats wishing to enter a TYC race shall complete the registration process before their first entry.
- 4.1 Visiting boats shall compete in no more than three TYC races in a season before completing a full TYC season registration.
- 4.2 Except where there is a separate notice of race, entries for all TYC races shall be lodged where possible using the SailSys online system. Alternately, entries may be lodged in person at the TYC office.
- 4.3 Each entry shall be accompanied by the appropriate entry fee. Entry fees are:
 - a) Bulk entry fee paid in advance to cover all races during the year: \$300;
 - b) Online entry fee for an individual race paid through SailSys: \$20; or
 - c) In person entry fee for an individual race paid at TYC: \$25.
- 4.4 Entrants shall provide information requested by TYC to satisfy current Queensland Health requirements. Failure to do so may result in the boat incurring a scoring penalty as defined in RRS 43(c) without a hearing; this changes RRS A5.1.
- 4.5 A boat may enter at any time until the warning signal of the race.

- 4.6 Should any owner or skipper wish to withdraw from a race his/her entry fee will not be refunded.

5 CREW MEMBERSHIP

- 5.1 All crew members participating in a race must be a TYC Sailing Member or purchase an Australian Sailing SailPass.
- 5.2 Any crew member who is 18 years old or more and who holds an active Australian Sailing number that is affiliated with another Club, can participate by purchasing a SailPass for each race in which they participate at TYC.
- 5.3 SailPass can only be purchased for a maximum of 15 races at a cost of \$15 each. After 15 races, the crew member must become a TYC Sailing Member, with the value of purchased SailPass' being credited to the membership.
- a) All skippers and crew participating in any race must be registered with the TYC. Crew registration may be completed online using SailSys or at the TYC office.
- 5.4 Failure to comply with these crew membership requirements shall result in:
- a) The crew member forfeiting their right to three free races when obtaining a SailPass; and
- b) A 2% time penalty being applied without a hearing to the boat's finish time for the fourth race in which that crew member participated. The percentage penalty shall double each race thereafter, with the penalty applied to the finishing time of the boat on which that crew member participated, until the crew member obtains a SailPass or TYC Sailing membership.

6 SAILING INSTRUCTIONS

- 6.1 Sailing instructions will be issued by 20th January 2021.

7 SCHEDULE OF EVENTS

- 7.1 The pointscore for the 2021 sailing season is based on twenty races, grouped into four quarterly series of five races each. Four race format series will be sailed, namely Buoy Course, Magnetic Island, Fixed Mark - Short, and Fixed Mark - Long, with five races in each format series.
- 7.2 A separate Novice Helm series of three races will be sailed; the scores from this series will not be counted in the Commodore's Cup. The Novice Helm series is intended to encourage participation and skills development of a boat's regular crew. In each of these races, a novice helm is to steer the boat from the warning signal until the boat has crossed the finish line. Owners and regular skippers are permitted to give advice and are responsible for the safety of the boat. The boat may be protested if anyone other than a novice helm is found to be steering at any time during the race, except that the owner or regular skipper may take the helm temporarily to prevent an emergency.
- 7.3 Separate Cruising Division (Jib & Main) races will be sailed; the scores from these races will not be counted in the Commodore's Cup. Two races have been scheduled initially; further races will be scheduled if there is sufficient participation in the first two races.

- 7.4 Separate Trailer Sailor races may be sailed if sufficient entries are received; the scores from these races will not be counted in the Commodore's Cup. The races will be sailed over short courses.
- 7.5 The schedule of races is included as Appendix A.
- 7.6 The schedule of social and other events is included as Appendix B.
- 7.7 The Sailing Committee may make changes to these schedules at any time.

8 PRIZES

- 8.1 Prizes for 1st place, 2nd place and 3rd place will be awarded for:
- 8.1.1 Each quarterly series (Tropical Series, Autumn Series, Winter Series, and Spring Series).
 - 8.1.2 Each format series (Buoy Course, Magnetic Island, Fixed Mark - Short, and Fixed Mark – Long).
 - 8.1.3 The Novice Helm series.
 - 8.1.4 The Commodore's Cup.
- 8.2 Prizes for each race in the Cruising Division and Trailer Sailor Division will be awarded based on the number of entries.
- 8.3 Additional prizes may be awarded at the discretion of the Sailing Committee.

9 DIVISIONS AND FLAGS

- 9.1 If there are less than three (3) Cruising, Multihull, or Trailer Sailor boats nominated for the race, the Officer of the Day may start them with the Racing Division.
- 9.2 The class flag for each division shall be as follows:

Division	Class Flag
Racing	TYC Burgee
Cruising	Numeral 2
Multihull	Numeral 3
Trailer Sailor	Numeral 4

10 RACING AREA

- 10.1 The racing area is shown in Appendix C.

11 HANDICAPS

- 11.1 The handicap system will be based on past performance of each boat.
- 11.2 Handicaps will be calculated using the SailSys performance handicap system (PHS).

12 SCORING

- 12.1 Scoring will be as per RRS Appendix A.

- 12.2 Penalty scores shall be allocated as follows (this changes RRS A5.3):
- 12.2.1 Any boat that did not start (DNC, DNS, or OCS), did not sail the course (NSC), or is disqualified (DSQ or DNE) will be scored points equal to the number of starters plus two (2).
 - 12.2.2 Any boat that retires before or after finishing (RET) will be scored points equal to the number of starters plus one (1).
 - 12.2.3 Any boat that did not finish (DNF) will be scored points equal to the number of starters.
 - 12.2.4 Any boat still racing when her time limit expires (TLE) will be scored points equal to the number of boats finishing within the time limit plus 1.
- 12.3 Each quarterly series consists of five races, with three completed races constituting a series. If all five races are completed in a series, each boat's quarterly series score shall be calculated in accordance with RRS A2.1; if less than five races are completed, all race scores will count.
- 12.4 Each format series (Magnetic Island, Buoy Course, Fixed Mark - Short, and Fixed Mark - Long) consists of five races, with three completed races constituting a series. If all five races are completed in a series, each boat's series score shall be calculated in accordance with RRS A2.1; if less than five races are completed, all race scores will count.
- 12.5 On days designated as Buoy Course races, the Officer of the Day may hold a series of short sprint races. If fewer than three races are held, all races on that day shall count towards a total score for that day's Buoy Course race; if more than three races are held, a boat's total score shall exclude her worst result.
- 12.6 Scores for the Commodore's Cup are the total of the scores from the format series.
- 12.7 The Novice Helm series consists of three races, with scores from all races to count.

13 PENALTY SYSTEM

- 13.1 RRS 44.1 is changed so that the 720-degree penalty turn is replaced by a 360-degree penalty.

14 SAFETY REGULATIONS

- 14.1 Any boat determined by the OA to be non-compliant with the following safety regulations may incur a scoring penalty as defined in RRS 43(c) for each race after they have been notified of the non-compliance until the non-compliance is rectified; this changes RRS A5.1.
- 14.2 All boats shall comply with Maritime Safety Queensland regulations.
- 14.3 All competing boats shall comply with Australian Sailing Special Regulations Part 1 Category 5 for all races. Additional equipment, itemised in Appendix D, shall be carried for Fixed Mark – Long races.
- 14.4 All competitors are to be familiar with their obligations under the TYC Incident Management Plan, especially as it relates to their role as part of a Race Committee.
- 14.5 Safety Inspection Sheet
- 14.5.1 A copy of the safety inspection sheet submitted with registration must be on board the boat at all times.

- 14.5.2 Inspections will be carried out in accordance with Rule 2.02 of the Australian Sailing Special Regulations Part 1 for Racing Boats.
- 14.5.3 Visiting boats will be required to comply with these requirements.
- 14.6 The Race Director or Officer of the Day may require boats to have “Boat Beacon” or a registered AIS system on board and transmitting for the duration of any race and up until the boat is at dock or safe anchorage.
- 14.7 All boats shall carry a VHF radio capable of communicating on channels 16, 22, 67 and 77; the radio may be fixed mount or a waterproof handheld.
- 14.8 Boats shall perform a sail past in front of the Race Committee with each crew member wearing a lifejacket prior to the start of the boat’s first race.
- 14.9 All boats shall carry sufficient fuel at the start of each race for two hours of motoring.
- 14.10 The Safety Officer or Sailing Committee may inspect any boat at any time for compliance with safety regulations.
- 14.11 The Race Committee may conduct races in a strong wind warning. However, they will cancel should a gale warning be imminent or forecast. Owners should check their insurance coverage under these circumstances before and during the race.
- 14.12 Any incident causing damage to boats or serious injury to persons requires an Incident Report to be completed and submitted to the Officer of the Day and Maritime Safety Queensland (MSQ) as soon as possible after racing has finished.
- 14.13 Any contact with “Aids to Navigation” must be reported to MSQ.
- 14.14 The person in charge of each boat is responsible for the safety of the boat and her crew as specified in [AS Special Regulations Part 1 for Racing Boats](#).
- 14.15 It is strongly recommended that a lifejacket be worn by each member of the crew at times such as, but not limited to at night, when alone on deck, when the true wind speed is 25 knots or above, or when visibility is less than 1 nautical mile. This changes Regulation 5.01.1(h).
- 14.16 It is recommended that anchors are removed from the bow while racing. However, if the anchor is left on the bow, a second, strong method of attachment shall be used.

15 SETTING AND SHEETING SAILS

- 15.1 Fixed and retractable spinnaker poles and bowsprits will be permitted for the purpose of setting asymmetrical spinnakers. This changes RRS 55.2 and 55.3.
- 15.2 A retractable pole or bowsprit shall be fully retracted at all times except when the spinnaker is being set, is set, or is being retrieved, and shall be retracted at the first reasonable opportunity after the spinnaker is fully retrieved.
- 15.3 Approaching a mark at which the spinnaker will be set, a retractable pole or bowsprit shall not be extended until the boat is in the zone.

16 DISCLAIMER OF LIABILITY

- 16.1 All those taking part in these races do so at their own risk and responsibility. Neither TYC nor any other club or company connected with the organising of these races is responsible

for the seaworthiness of a boat whose entry is accepted, nor for the sufficiency or adequacy of its equipment. Owners shall accept full responsibility for the seaworthiness and safe navigation of their boats and competence of their crews.

- 16.2 Boat owners, skippers and crew should be aware that there may be uncharted obstacles under the waters on which races are held. Such uncharted obstacles include reefs, bomboras and rocks which could be a danger to boats and crews. TYC accepts no responsibility for any damage to or loss of any boat or for injury to or death of any crew person which may occur as a result of a collision with any underwater obstacle. All participants compete in races at their own risk.
- 16.3 RRS 3 states: 'The responsibility for a boat's decision to participate in a race or to continue to race is hers alone.' By participating in this event each competitor agrees and acknowledges that sailing is a potentially dangerous activity with inherent risks. These risks include strong winds and rough seas, sudden changes in weather, failure of equipment, boat handling errors, poor seamanship by other boats, loss of balance on an unstable platform and fatigue resulting in increased risk of injury. Inherent in the sport of sailing is the risk of permanent, catastrophic injury or death by drowning, trauma, hypothermia or other causes.

APPENDIX A: 2021 SCHEDULE OF RACES

DATE	DAY	WARNING	START	EVENT
TROPICAL SERIES				
6 th Mar	Sat	1255	1300	Magnetic Island Race 1
20 th Mar	Sat	1355	1400	Fixed Mark – Short Race 1
2 nd Apr	Fri	1055	1100	Fixed Mark – Long Race 1
3 rd Apr	Sat	1055	1100	Fixed Mark – Long Race 2
17 th Apr	Sat	1355	1400	Buoy Race 1
AUTUMN SERIES				
24 th Apr	Sat	1355	1400	Fixed Mark – Short Race 2
8 th May	Sat	1355	1400	Buoy Race 2
30 th May	Sun	1055	1100	Magnetic Island Race 2
12 th Jun	Sat	1255	1300	Fixed Mark – Long Race 3
26 th Jun	Sat	1355	1400	Buoy Race 3
WINTER SERIES				
10 th Jul	Sat	1355	1400	Fixed Mark – Short Race 3
24 th Jul	Sat	1255	1300	Magnetic Island Race 3
7 th Aug	Sat	1355	1400	Buoy Race 4
21 st Aug	Sat	1355	1400	Fixed Mark – Short Race 4
28 th Aug	Sat	1255	1300	Fixed Mark – Long Race 4
SPRING SERIES				
18 th Sep	Sat	1255	1300	Magnetic Island Race 4
2 nd Oct	Sat	1355	1400	Buoy Race 5
3 rd Oct	Sun	1055	1100	Magnetic Island Race 5
16 th Oct	Sat	1355	1400	Fixed Mark – Short Race 5
30 th Oct	Sat	1055	1100	Fixed Mark – Long Race 5 (Herald Island)

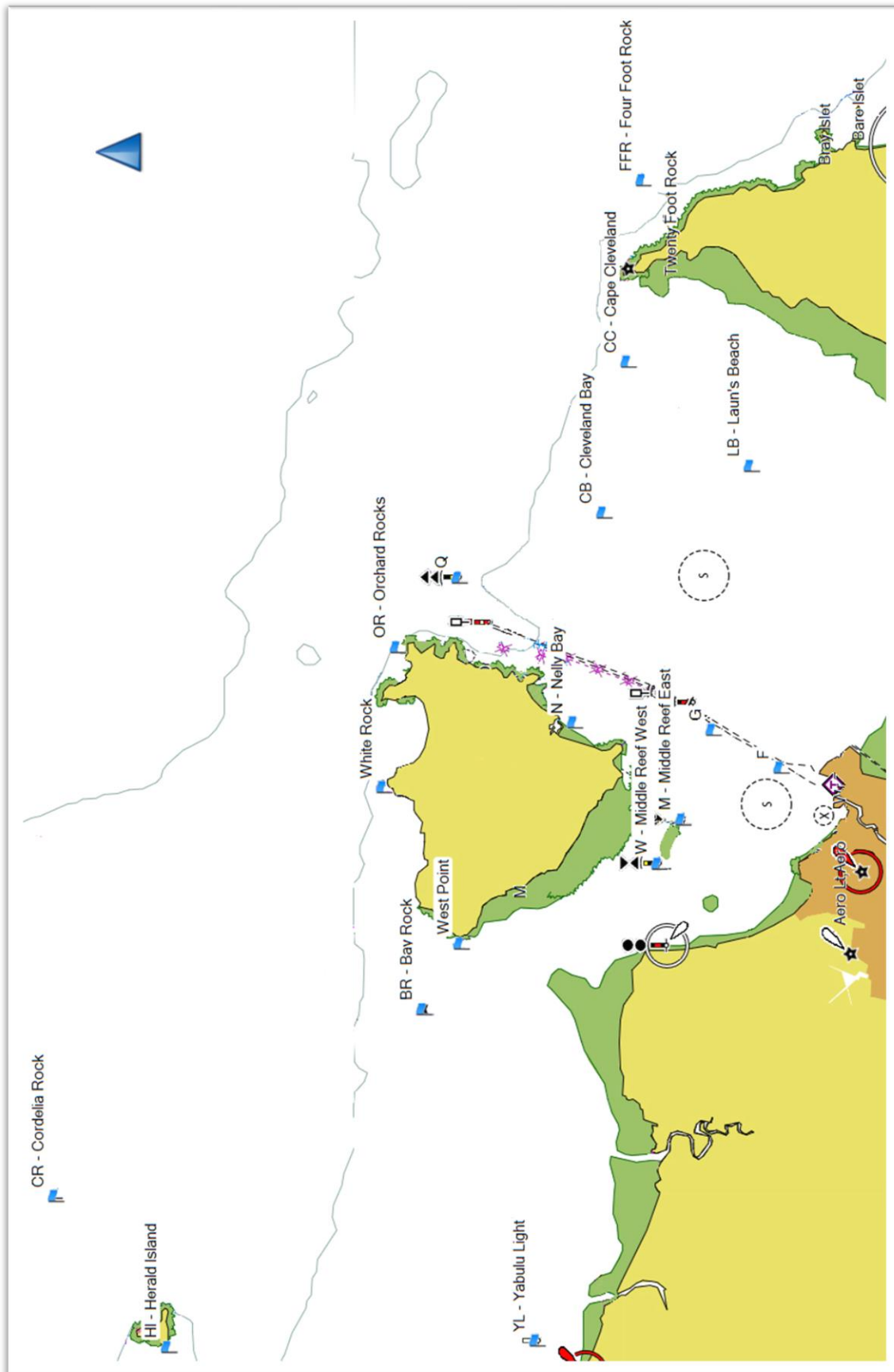
NOVICE HELM SERIES				
16 th May	Sun	1355	1400	Novice Helm Race 1
15 th Aug	Sun	1355	1400	Novice Helm Race 2
10 th Oct	Sun	1355	1400	Novice Helm Race 3

CRUISING DIVISION (JIB & MAIN) RACES				
20 th Mar	Sat	1405	1410	Race 1
17 th Apr	Sat	1405	1410	Race 2
Future	Additional races will be scheduled if there is enough demand			

APPENDIX B: 2021 SCHEDULE OF SOCIAL AND OTHER EVENTS

DATE	DAY	TIME	EVENT	COMMENTS
6 th Jan	Wed	1700	Twilight Sailing Resumes	
22 nd Jan	Fri		Trivia Night – Australia Theme	
23 rd Jan	Sat		Australia Day Social Sail & Beach Lunch	
25 th Feb	Thu	1815	Season Briefing	Mariners Room (TYC)
28 th Feb	Sun	1000	Blessing of the Fleet	Registration Required
25 th Mar	Thu	1815	TYC Sailing Workshop	Mariners Room (TYC)
2 nd – 5 th Apr	Fri – Mon		Easter Weekend – Cruising Rally	
24 th April	Sat		Tropical Series Presentations	
26 th Apr	Mon		Anzac Day Public Holiday	
29 th Apr	Thu	1815	TYC Sailing Workshop	Mariners Room (TYC)
1 st – 3 rd May	Sat - Mon		May Day Long Weekend	
18 th – 22 nd May	Tue - Sat		Quicksilver Port Douglas Race Week	
27 th May	Thu	1815	TYC Sailing Workshop	All welcome to join
19 th June	Sat	TBC	TYC Mariners Ball	Townsville Yacht Club
24 th June	Thu	1815	TYC Sailing Workshop	Mariners Room (TYC)
29 th June	Tue	1800	Townsville Yacht Club AGM	Mariners Room (TYC)
10 th July	Sat		Autumn Series Presentations	
29 th July	Thu	1815	TYC Sailing Workshop	Mariners Room (TYC)
12 th – 19 th Aug	Thu – Thu		Airlie Beach Race Week	
21 st – 28 th Aug	Sat – Sat		Hamilton Island Race Week	
26 th Aug	Thu	1815	TYC Sailing Workshop	Mariners Room (TYC)
2 nd – 8 th Sep	Thu - Wed		Sealink Magnetic Island Race Week	
10 th – 12 th Sep	Fri – Sun		TYC GaLS Regatta	
18 th Sep	Sat		Winter Series Presentations	
30 th Sep	Thu	1815	TYC Sailing Workshop	Mariners Room (TYC)
3 rd – 4 th Oct	Sat – Mon		Queen's Birthday Long Weekend	
28 th Oct	Thu	1815	TYC Sailing Workshop	Mariners Room (TYC)
30 th Oct	Sat	1800	Herald Island BBQ	All Vessels Welcome
20 th Nov	Sat	1830	TYC Sailing Presentation Night	1900 Start
25 th Nov	Thu	1815	TYC Sailing Workshop	Mariners Room (TYC)
15 th Dec	Wed	1700	Christmas Twilight Sail	All Vessels Welcome
22 nd Dec	Wed	1700	Last Twilight Sail of 2021	
5 th Jan	Wed	1700	Twilight Sailing Resumes 2022	

APPENDIX C: RACING AREA



APPENDIX D: REQUIREMENTS FOR FIXED MARK – LONG RACES

Headings are from Australian Sailing's *2017 – 2020 Special Regulations Part 1 for Racing Boats*, where additional details of these requirements may be found. The *2021 – 2024 Special Regulations Part 1 for Racing Boats* will come into effect on 1st July 2021. These Appendix D requirements will be updated before that date if required.

Fixed Equipment

1. Taut lifelines supported on stanchions, designed to form an effectively continuous barrier around a working deck with the aim of minimising the risk of people falling overboard. If the boat does not have lifelines, the crew shall wear lifejackets at all times and be clipped to the boat when on deck between the hours of sunset and sunrise.
2. Toilet or securely fastened bucket.
3. Bunks, securely installed and sufficient for 25% of the crew.
4. Cooking stove or heating appliance, capable of being safely operated in a seaway.
5. At least 2.5 litres of water per crew member shall be carried at the start of the race
6. Unless permanently fitted, each bilge pump handle shall be provided with a lanyard or catch or similar device to prevent accidental loss
7. Marine magnetic compass, independent of any power supply permanently installed.
8. Navigational lights that conform to the International Regulations for Prevention of Collisions at Sea, exhibited as required by those regulations
9. Reserve navigational lights capable of being quickly mounted with a power supply independent of the boats main supply.
10. Recommended: Permanently installed DSC capable VHF transceiver.
11. Waterproof handheld VHF transceiver.
12. An emergency antenna where the regular antenna depends upon the mast.
13. At least two means of receiving weather bulletins.
14. Recommended: A permanently installed GPS.

Portable Equipment and Supplies

15. Clipping points attached to through-bolted or welded deck plates or other suitable and strong anchorage points adjacent to stations such as helm, sheet winches, and masts, where crew members work for long periods. Clipping points shall enable a crew member to clip on before coming on deck and unclip after going below. Whilst continuously clipped on, a crew member shall be able to move readily between the working areas on deck and the cockpit with the minimum of clipping and unclipping operations. There shall be sufficient clipping points enabling at least 50% of the crew to be simultaneously clipped on.
16. At least two fire extinguishers of a minimum 10B(E) rating, each of dry powder or equivalent
17. The primary anchor shall be carried assembled and attached to the ground tackle. The primary anchor shall have a minimum chain length of 10m plus a length of rope (or chain) of 50m.
18. At least two flashlights, water resistant and floating type with spare batteries and bulbs (if they can be replaced).

19. Medical kit –Items listed for Cat 5 plus the following: triangular bandage, butterfly or steristrips (strips of 5) x 2, antiseptic skin solution, Normal saline 250ml, seasick tablets x 10.
20. Recommended: A depth sounder.
21. An emergency tiller capable of being fitted quickly to the rudder stock where the normal method of steering is other than by a strong tiller fitted directly to the rudder stock.
22. Crews must be aware of alternative methods of steering the boat in any sea conditions in the event of rudder loss. At least one method must have been proven to work on the boat.
23. A bosun's chair or climbing harness.
24. A lifebuoy (safety colour in the yellow - red range) with a self-igniting light within reach of the helmsperson and ready for instant use. Life buoy to be fitted with marine grade retroreflective material.
25. Two red parachute flares.

Personal Equipment

26. A lifejacket complying with AS4758-2008 (minimum Level 150), or an equivalent or more stringent overseas standard such as ISO 12402 – 3 (Level 150) or ISO 12402-2 (Level 275) for each crew member. Each lifejacket shall have marine-grade retroreflective tape and an attached whistle.