


What you should know by
the end of this talk...



TOWNSVILLE CHANNEL
CAPACITY UPGRADE

- 
- What does the port do?
 - What is the Channel Capacity Upgrade and why do it?
 - How will it be done?
 - Protecting the environment.

PORT OF TOWNSVILLE SNAPSHOT



TOWNSVILLE CHANNEL
CAPACITY UPGRADE

9,000

JOBS CONNECTED TO
THE PORT



\$10BN
TRADE VALUE

135

EMPLOYEES



154

YEARS OF OPERATION

240

PORT CONNECTIONS



8

BERTHS



\$76M

ANNUAL TURNOVER



WHAT DO WE DO?



TOWNSVILLE CHANNEL
CAPACITY UPGRADE



IMPORTS - Vehicles, fuel, oil, gas, bitumen, sand, timber, furniture, cement, containers, general cargo,

EXPORTS – Sugar, lead, silver, zinc, cattle, refrigerated meat, containers, mung bean, vegetables, fruit



LARGEST container, general cargo and automotive port in Northern Australia



**TOWNSVILLE CHANNEL
CAPACITY UPGRADE**

DARWIN

Population: 130,585
Port Tonnage: 3.4 M tonnes

TOWNSVILLE

Population: 192,038
Port Tonnage: 10 M tonnes

BRISBANE

Population: 2.2 M
Port Tonnage: 35 M tonnes

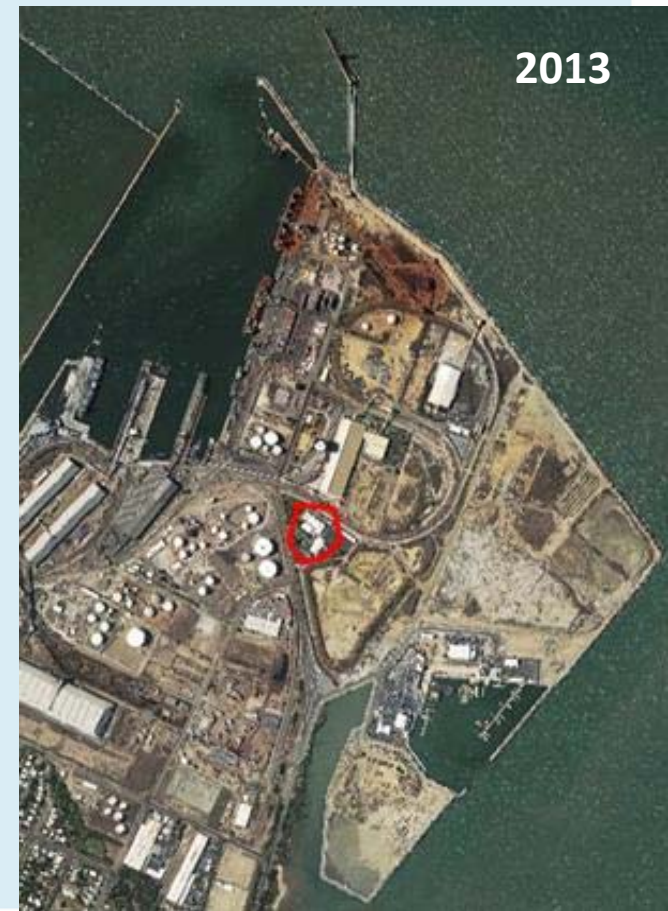


- $\frac{1}{3}$ size of Brisbane Port
- 3 x size of Darwin Port
- Service > 700,000 people with essential goods

GROWTH OF THE PORT OVER 154 YEARS



TOWNSVILLE CHANNEL
CAPACITY UPGRADE



WHAT IS IT AND WHERE IS IT?



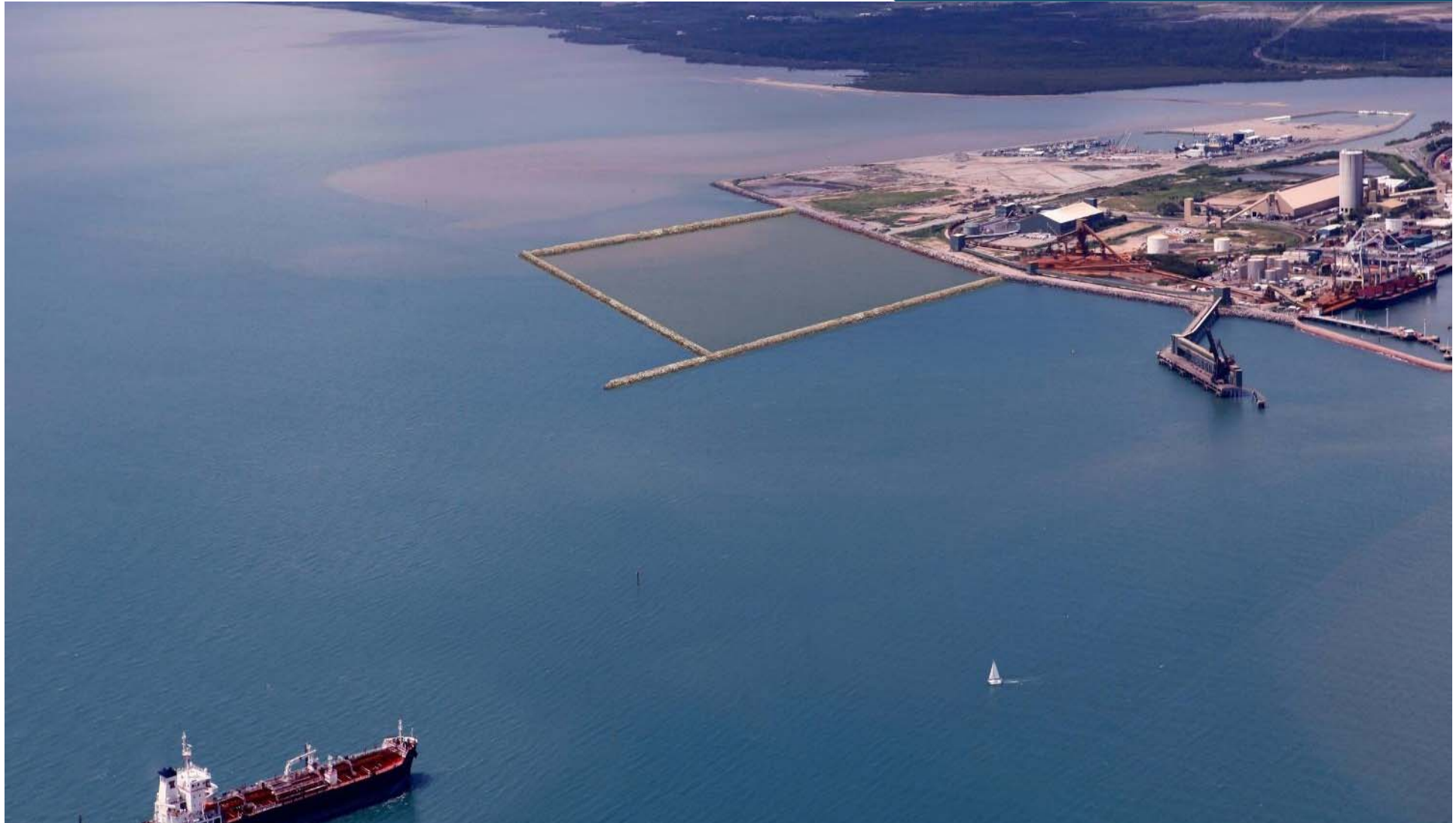
TOWNSVILLE CHANNEL CAPACITY UPGRADE



DREDGE MATERIAL TO LAND



TOWNSVILLE CHANNEL
CAPACITY UPGRADE



APPROVALS TAKE A WHILE...



TOWNSVILLE CHANNEL
CAPACITY UPGRADE

Master plan (2007)

PEES (2009-2010)

PEP EIS (2010-present)

EIS Referral -EPBC and IAS (April / May 2011)

Final TOR / EIS Guidelines (April 2012)

EIS submitted (March 2013)

Public consultation (closed May 2013)

Supplementary information identified (July & December 2013)

Project staging considered and revised in response

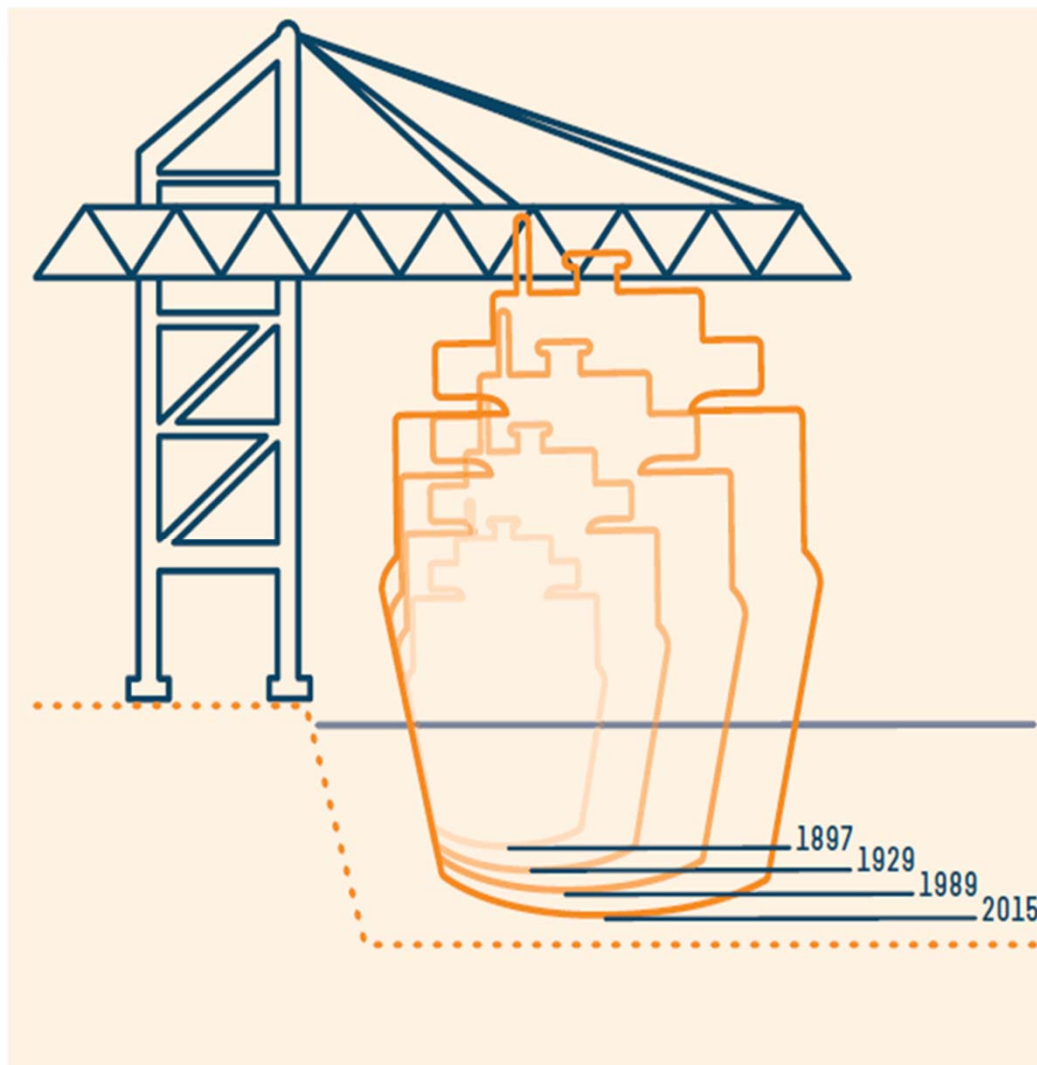
Additional EIS Completed and submitted (October 2016)

Public consultation on AEIS (closed November 2016)

BIGGER SHIPS NEED A BIGGER CHANNEL



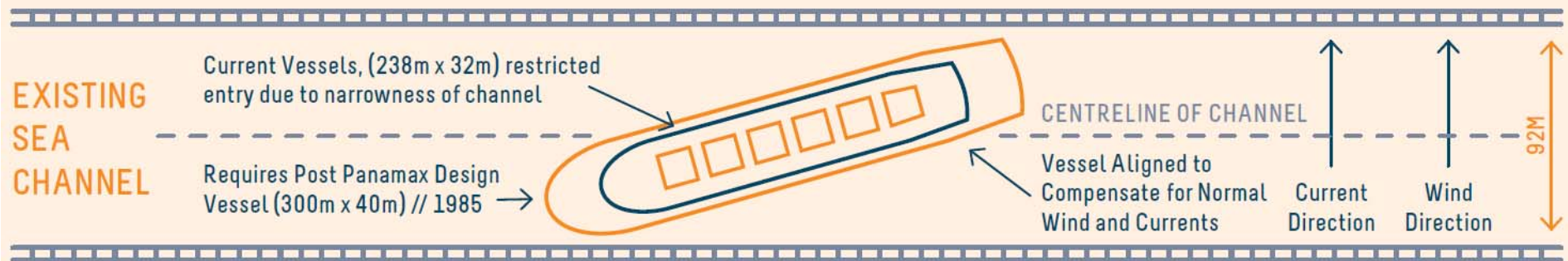
TOWNSVILLE CHANNEL
CAPACITY UPGRADE



WHY A WIDER CHANNEL?



TOWNSVILLE CHANNEL CAPACITY UPGRADE



BENEFITS OF WIDENING THE CHANNEL



TOWNSVILLE CHANNEL
CAPACITY UPGRADE



\$723M

present value, with benefit cost ratio
3.61



120 FTE Jobs in
Townsville, **245** FTE Jobs
in Qld



\$20M

economic impact from cruise
ships by 2030



10,290
b-double trucks
removed off highways



11 x
more efficient than road
4 x
more efficient than rail

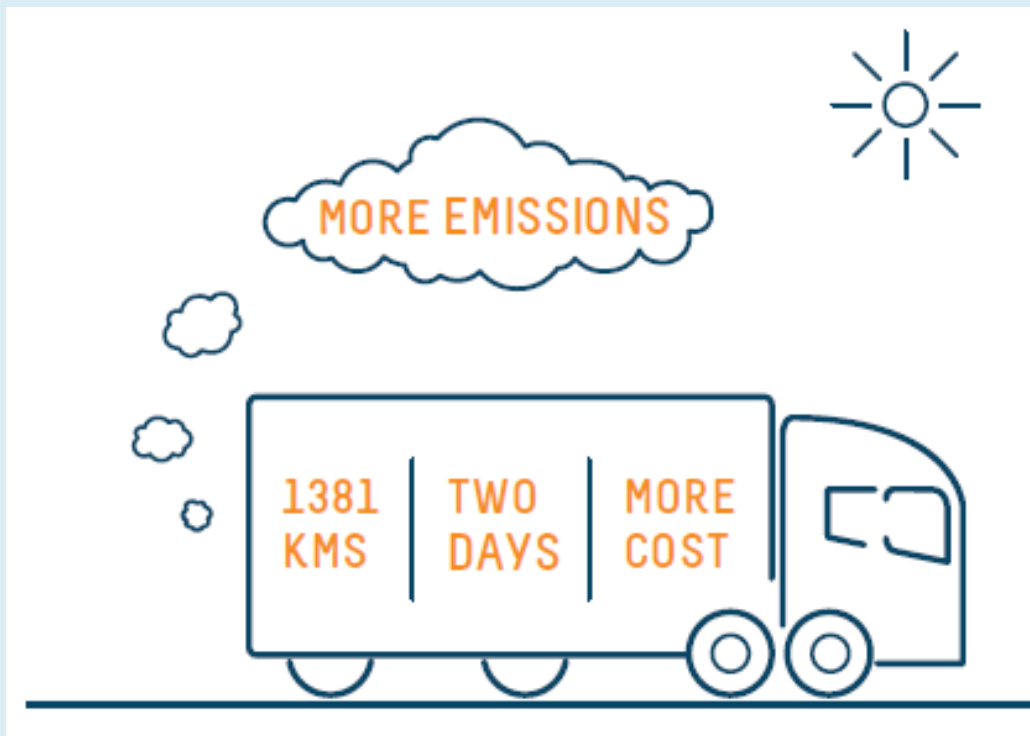


194,481
tonnes
savings per year

WHAT IF THE CHANNEL IS *NOT* WIDENED?



TOWNSVILLE CHANNEL
CAPACITY UPGRADE



North Queensland
will become
dependent on
trucking or railing
freight.

HOW HAVE OTHER PORTS DEALT WITH THIS ISSUE?

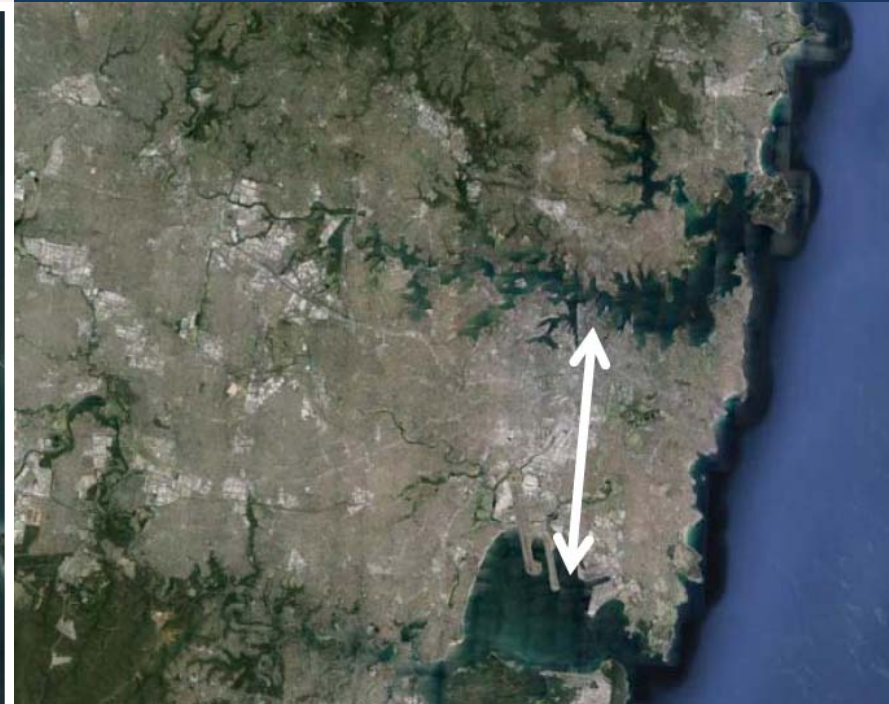


TOWNSVILLE CHANNEL
CAPACITY UPGRADE

Brisbane expanded seaward from
Hamilton to Fisherman Islands



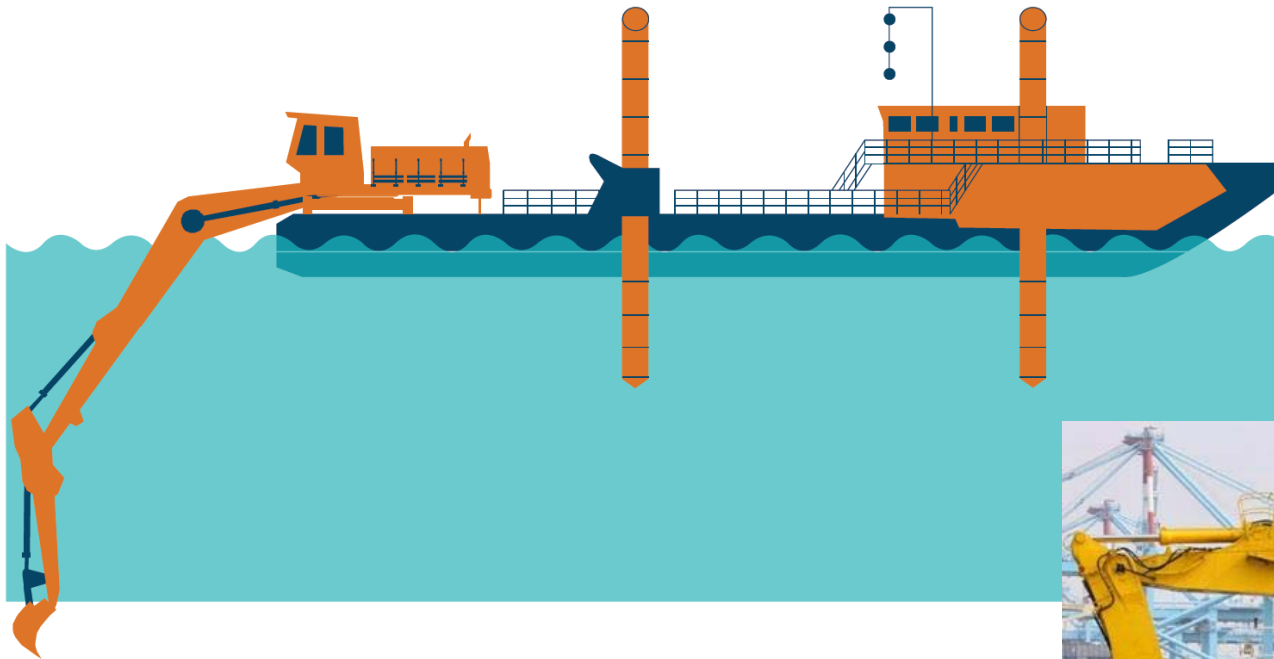
Sydney moved from Port Jackson
to Port Botany



HOW IS DREDGING DONE?



TOWNSVILLE CHANNEL
CAPACITY UPGRADE



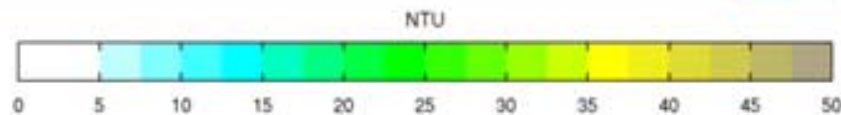
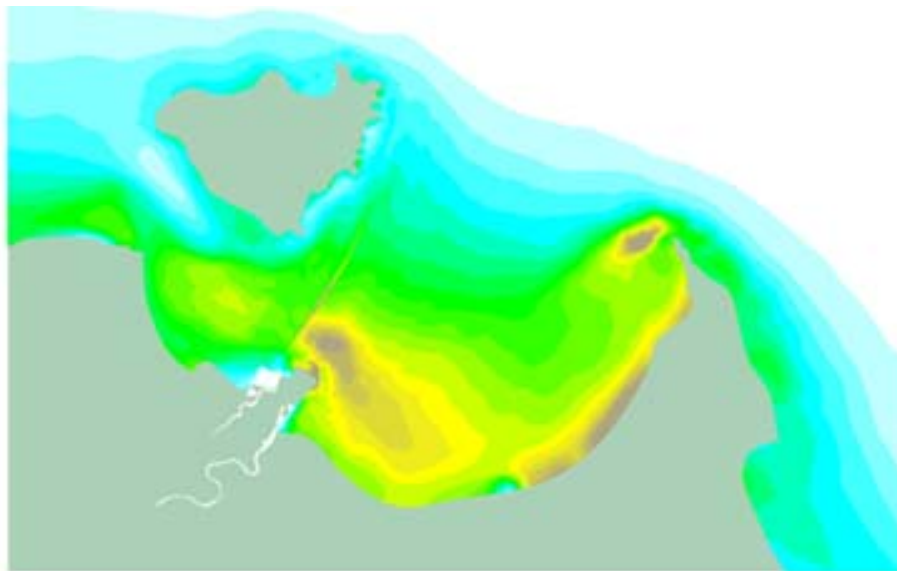
Backhoe dredging is the most environmentally friendly dredging method

DREDGE IMPACT – MECHANICAL DREDGE

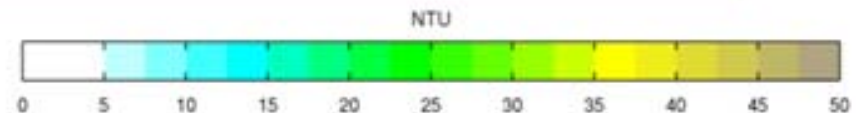


TOWNSVILLE CHANNEL
CAPACITY UPGRADE

95th percentile of modelled
ambient turbidity



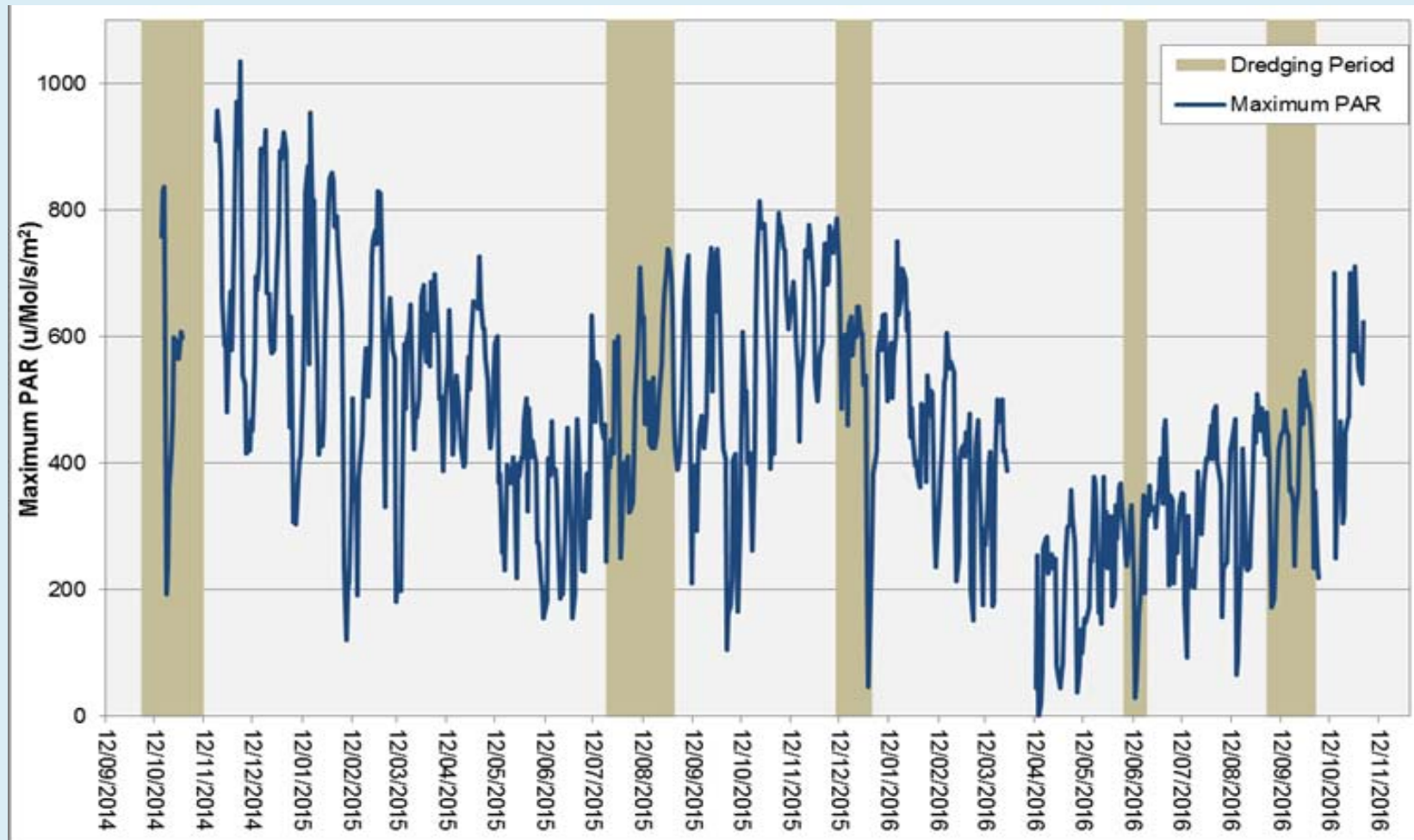
Impact of dredging on the
95th percentile of turbidity



WATER QUALITY MONITORING AROUND MAGNETIC ISLAND



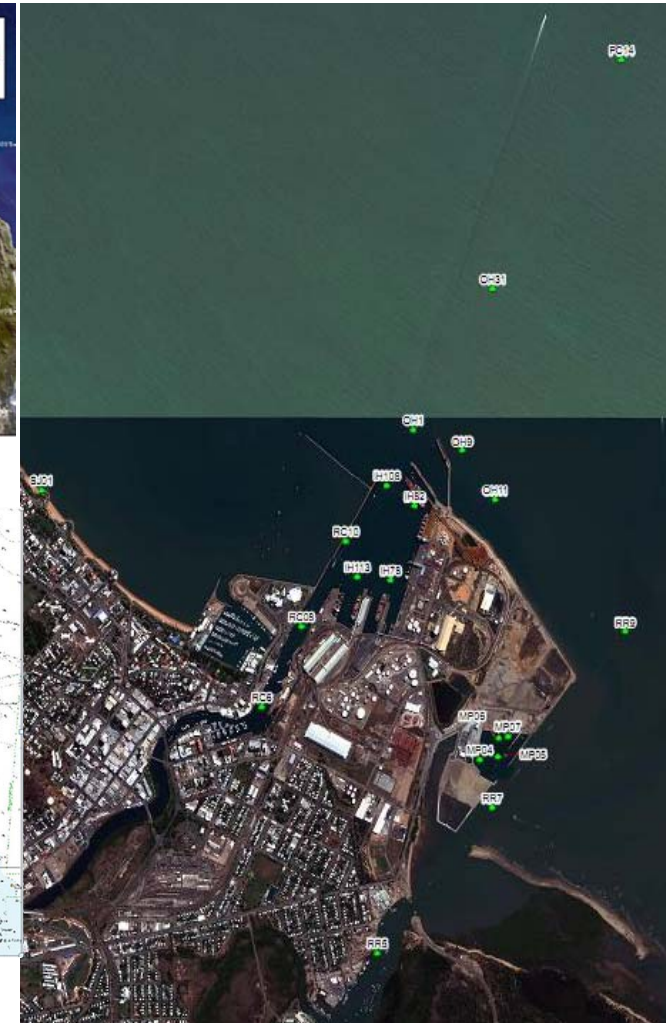
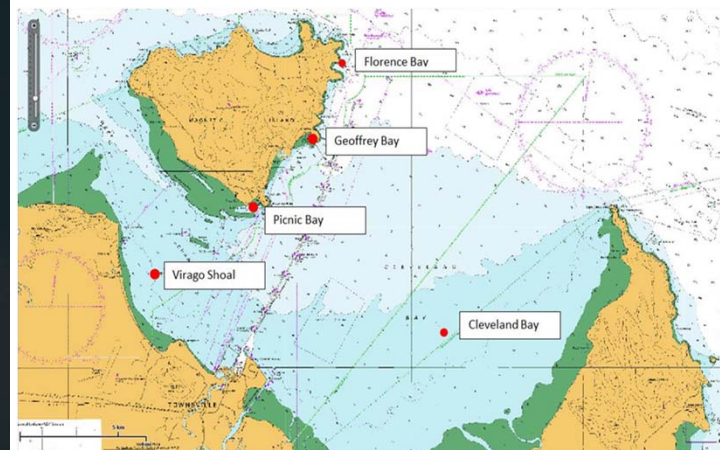
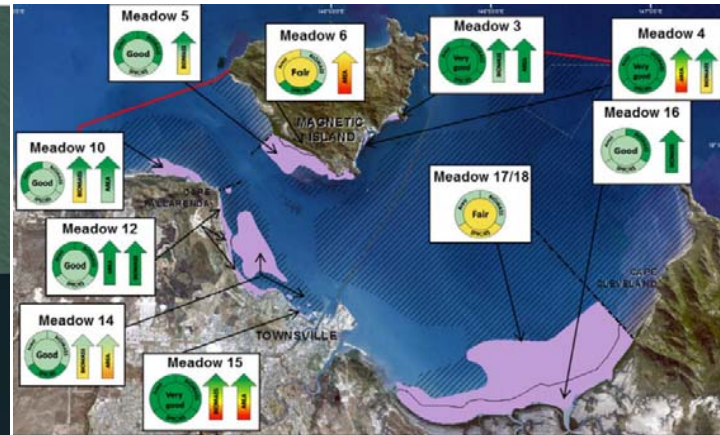
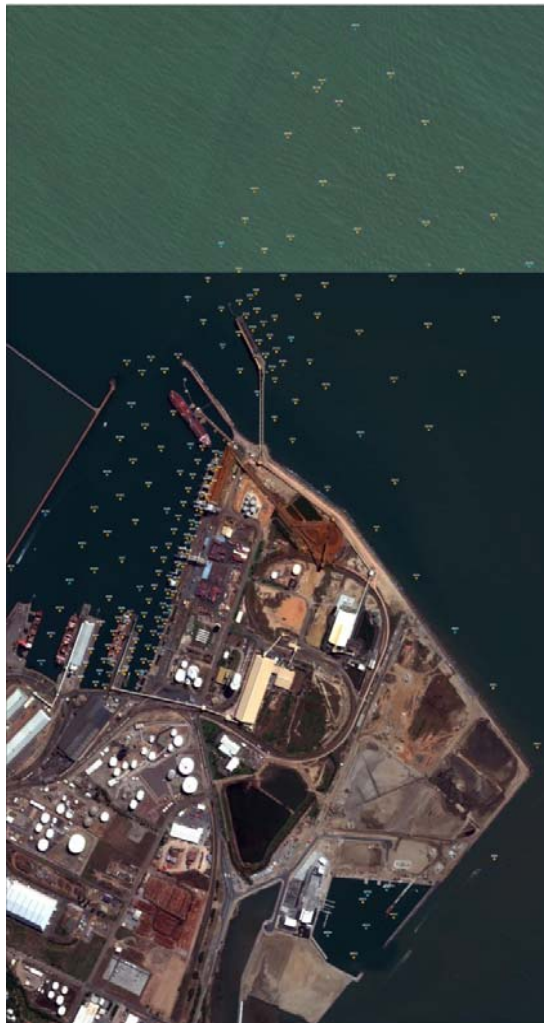
TOWNSVILLE CHANNEL
CAPACITY UPGRADE



PORT MONITORING IN CLEVELAND BAY



TOWNSVILLE CHANNEL
CAPACITY UPGRADE



MONITORING – LIVE RESULTS



TOWNSVILLE CHANNEL
CAPACITY UPGRADE

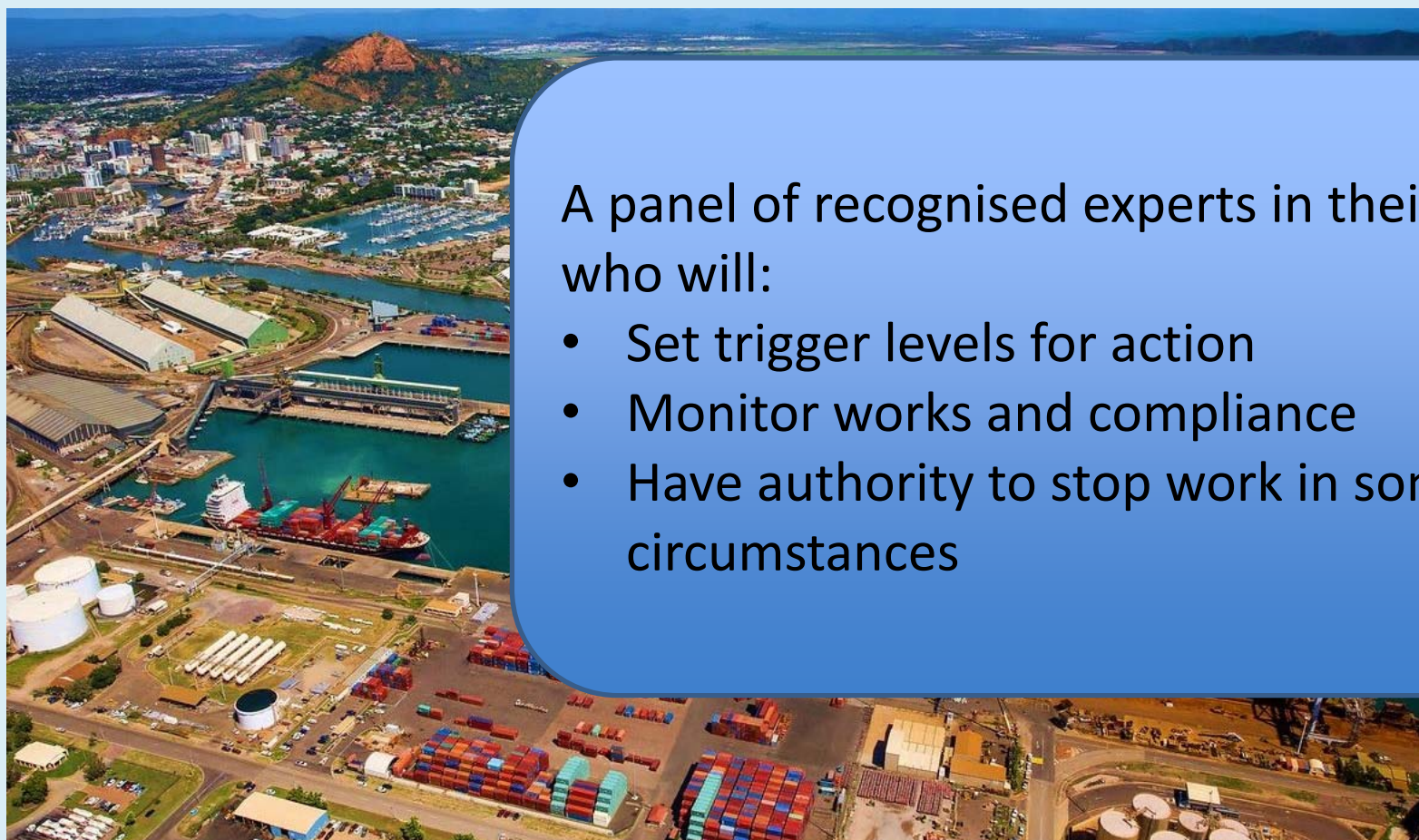


- POTL has bought 5 telemetry sensors to be mounted on buoys around the bay
- Live data will be on the Port website 24/7
- Buoys are currently in commissioning

INDEPENDENT TECHNICAL ADVISORY COMMITTEE



TOWNSVILLE CHANNEL
CAPACITY UPGRADE



A panel of recognised experts in their field, who will:

- Set trigger levels for action
- Monitor works and compliance
- Have authority to stop work in some circumstances

PLACEMENT OF DREDGE MATERIAL



TOWNSVILLE CHANNEL
CAPACITY UPGRADE



NO DREDGE MATERIAL
WILL BE DISPOSED
OF AT SEA



ALL MATERIAL WILL
BE 100% BENEFICIALLY
RE-USED

As per the requirements of the regulator