

Townsville Port Community Liaison Group Minutes of Meeting

Date: Wednesday 27 June 2018 – 5pm
Venue: POTL Boardroom, Benwell Drive, South Townsville
Chair: Ranee Crosby, CEO, Port of Townsville

Attendees

1	Adam Hinks	Community Rep	9	Kim Gebers	Manager Infrastructure, POTL
2	Adam Smith	Local Marine Advisory Committee	10	Leon Kippin	Community Rep
3	Annie Ilett	Magnetic Island Community Engagement Officer, POTL	11	Norman Rains	Birdlife Townsville
4	Chris Meigel	Community Rep	12	Ranee Crosby	CEO, POTL
5	Heath Hatfield	Community Rep	13	Sharon Hoops	Manager Corporate Affairs, POTL
6	Ian Ferguson	Community Rep	14	Sharon Marks	Conservation Volunteers Australia
7	Keith Noble	Community Rep	15	Vern Veitch	Community Rep
8	Ken Dunlop	Sun Metals			

Apologies

Brendon Nolan	Community Rep	Melinda Loudon	POTL, Environment & Planning Manager
David Zammit	Glencore	Paul Crocombe	Community Rep
Judy Newman	Community Rep	Stephen Ellis	Community Rep
Julie Carmody	Magnetic Island Residents & Ratepayers Association		

Actions Summary

1. CLG members are invited to email any further comments or questions on the Museum of Underwater Art project directly to Adam Smith.
2. POTL to circulate half-yearly review survey to CLG members for input prior to the next CLG meeting.
3. CLG members are requested to suggest to Sharon Hoops any sectors or people they think would be useful additions to the CLG, for discussion at the next meeting of the CLG.

Attachments

- Port Update notes
- Museum of Underwater Art presentation

1. Welcome/apologies (Chair)

Chair Raneë Crosby welcomed members to the CLG's 14th meeting. Apologies for tonight's meeting were noted. The scheduled tour of the tug boats has been postponed due to busy shipping activity in the Port.

2. Record of previous meeting held 30 May 2018

The Minutes of the previous meeting were adopted without change and all actions have been completed.

3. Museum of Underwater Art

Adam Smith presented an update on the plans for the Museum of Underwater Art on the Strand intertidal zone and at John Brewer Reef, Palm and Magnetic Islands (see attached). Discussion and input from the CLG included:

- several sites in the Townsville region have been selected to encourage more visitors to come and stay longer in the region to experience the range of world-class sites. Each site will have a different theme, but will be linked. There may be fewer sites depending on the funds available to the project.
- the proposed lagoon site at John Brewer Reef is used by a range of industries, including commercial fishing industry and will need careful planning and management.
- Potential vulnerability of intertidal installations to weather events such as cyclones, particularly at Geoffrey Bay, Magnetic Island

CLG members also noted:

- the MOUA could provide a world-class, iconic attraction for world-wide visitors.
- world-class artist Jason de Caires Taylor usually selects only one area /site per country and has signed a contract with the Townsville MOUA Board for development of art installations in the Townsville/Great Barrier Reef region.
- installations are designed to engineering standards, to be anchored by screw moorings or large concrete bases.
- Funding of \$2m has been secured from the Queensland Government, together with \$750,000 from the private sector. A decision on Federal funding is expected in late August/early September.

Action: CLG members are invited to email any further comments or questions on the Museum of Underwater Art project directly to Adam Smith.

3. CLG half yearly review

Raneë Crosby presented a review of the CLG achievements January to June 2018, together with a proposed schedule for CLG meetings for the remainder of 2018. The Port is keen to hear from the CLG about:

- what topics are most important to the community?
- how useful are the topics the CLG are currently covering?
- where can an informed CLG have most impact?
- what projects could the CLG be championing that would be useful to the community?

POTL will send out a survey for CLG input and finalisation at the next CLG meeting.

Discussion and input from the CLG included:

- enhancing tourism (eg birdlife tours)

- development of the Green Port concept
- tracking of the movement of dredge material in Cleveland Bay

Action: POTL to circulate half-yearly review survey to CLG members for input prior to the next CLG meeting.

4. Port Updates – as per circulated document (attached). The CLG noted the following additional points:

- Tourism vessels may come alongside cruise ships for direct transfer of passengers subject to the approval of the Regional Harbour Master and the cruise ship Master. Jetties for tourism vessels to load/unload passengers are also being considered as part of the Harbour City Plan.
- New “Hullwiper” technology will be available at the Townsville Port in the near future. This may encourage cruise ships to stay overnight and provide more tourism opportunities for ‘time critical’ tourism operations.
- Whilst tourism remains the primary focus for visiting cruise ships, the Port is looking at also promoting Townsville as a service port for bunkering, cleaning etc.
- The two Magnetic Island water quality monitoring buoys were deployed on 26 June. It is expected that data will be available on the website soon. A news story will be released soon.
- Dust around the Port continues to be managed. POTL have contracted gardeners as full-time employees to provide continuous and reliable services, including around Environment Park. Positive feedback has been received from local residents about their regular interactions with the gardening staff.
- Final results of the PFAS site investigations will be released to the public in late July. The delay is due to the increase in the number of requests for testing of local residents’ bores. POTL is currently contacting residents as their individual results are received. The Department of Environment and Science and Queensland Health review the results against the national guidelines and, to date levels appear to be very low. CLG members were not aware of any concerns in the community about PFAS and were invited to contact POTL if they hear of any concerns.
- The recent State Budget committed \$75m for the Channel Capacity Upgrade. The port will contribute \$43m. Discussions continue with the Federal Government regarding the balance of funding.
- Trail blasts at the quarry in Granitevale have been conducted. Pre- and post- blast environmental monitoring has been successful and well below the regulated limits.
- Berth 4 crane design specifications and procurement packages will be released shortly.
- Port Master Plan will be brought to the CLG for input when ready.
- The Port has had a record year for containers and cars. Generally trade has increased since last year. More detail will be made available to the CLG when the end of financial year statistics are received.
- The trade team, in conjunction with Townsville Council and Townsville Enterprise, have produced a brochure “A Guide for Exporters” (tabled) and are participating in the Asia Market Forum on 13 July at JCU.

5. General Business

- Keith Noble advised that regional Natural Resource Management (NRM) groups are looking at tradeable commodity credits for water quality. Qantas are looking at investing in this initiative. This could be a topic for a future CLG meeting.
- Sharon Marks advised that the Herbert River Catchment Management Group are improving drainage to restore remnant wetland at Lucinda (Port land). She requested any records the Port may have on this area and will send a formal request by email to Kim Gebers.
- Norm Rains requested information about the transport routes for supply of rocks for the Port Reclamation Area works. The outcomes of the current tender process will determine the sites of locally sourced rock and transport routes to the Port. Approvals of proposed traffic and safety management plans will need to be obtained from DTMR and communicated to the public prior to commencement of works. The CLG will be advised of the sources of the supply, transport routes, quantities and frequency once the supply source/s have been determined. Vern Veitch raised the issue of preventing spread of seeds with the rock material.
- Leon noted the new cattle rolling stock along the entrance road to the Port. Raneer advised that the new rolling stock is currently parked on the Aurizon rail sidings in the port but noted cattle are not railed directly into the Port for shipment. Raneer also advised about the new Pacific National sugar rail wagons which transport Wilmar sugar to the Port.
- Adam Hinks advised that a lot of the shipwrecks around Magnetic Island link back to the Port. Information is to be found at the Magnetic Island Museum in Picnic Bay. Raneer advised that a Port Information display is currently being developed at the Maritime Museum in South Townsville.
- Heath Hatfield noted the advert in today's Townsville Bulletin for large shed space on Port land. Raneer noted that this was a lessee advertising the sale of their lease and shed facility in Nexus Business Park.
- Sharon Hoops noted that last year the CLG had decided to cap membership for 12 months until August 2018. With this date approaching there is now the opportunity to look at CLG membership again, in particular to replace members who have resigned.

Action: CLG members are requested to suggest to Sharon Hoops any sectors or people they think would be useful additions to the CLG, for discussion at the next meeting of the CLG.

Next meeting: Wednesday 27 July 2018 at 5pm at POTL Boardroom/Glencore Operations, Benwell Road, South Townsville

Meeting closed at 6.35pm

Port of Townsville Community Liaison Group Updates – June 2018

TRADE AND CARGO

- Full financial year results are being finalised with trade figures are generally in line with forecasts for the financial year.
- Containers continue to be a success story with more than 70,000 boxes moving through Townsville Port as at end May, already surpassing the previous record of 62,512 from 2014/2015.
- Motor vehicle imports are likely to reach record numbers this financial year, with more than 16,000 motor vehicles imported to the end of May.
- The Port is collaborating with Townsville Enterprise and several regional stakeholders to facilitate an Agricultural Market Supply Chain Study to identify new commodities that may deliver sustainable markets for the North Queensland economy.
- The Port of Townsville publication 'A Guide for Exporters' is complete and being circulated to potential exporters in the region.
- The Port hosted Tom Calder, TIQ Commissioner ASEAN and Toni Brownie, GM International Operations from Trade & Investment Queensland to a port overview presentation and port tour.
- The Port will once again be involved in showcasing our capability at the annual JCU Asian Market Forum being held on 13 July.

PORT DEVELOPMENTS AND PROJECTS

Channel Capacity Upgrade (CCU)

- An assessment of rock at the Port's Granitevale quarry site is being completed to validate suitability of the rock for the Channel Capacity Upgrade Project. Options for sourcing of armour rock from third party quarries are also being evaluated through a recent Expressions of Interest process, with site visits to shortlisted suppliers underway.
- The Port's CCU team has been working on the development of a scope of works for marine studies which will be undertaken as baseline definition for the project. A Terms of Reference for the Independent Technical Assessment Committee (ITAC) is also being prepared.
- Tenders for the supply of demountable office, toilets and crib accommodation for the project are being sourced. These will be located on the northern side of the Eastport area (near what is currently the Northern sea wall) as part of the early site works preparation.

Berth 4 Cranes & Cargo Terminal Area

- Design works are ongoing, and procurement packages for the cranes and cargo terminal area are being finalised.
- Crane specifications are currently in development.

Cargo Laydown Areas

- Preliminary works are underway to develop additional cargo laydown areas within the port, with the first area expected to be complete in July.

Port Rail Masterplan

- POTL has engaged consultants to assist in the development of a Port Rail Masterplan. The aim is to guide long-term development of rail within the port to ensure best utilisation of rail for customers. This Masterplan is expected to be completed in November.

Ross River Pile Moorings

- The Ross River Pile moorings have been removed by the Port's Maintenance Team.

HARBOUR CITY

Strand Ferry Terminal

- Sealink and Honeycombe Property Group's Market Led Proposal continues to be investigated.

Cultural Centre/Reef HQ Precinct

- Expressions of Interest for the redevelopment of this precinct were called on 4 May.
- Submissions close on 6 July.

ENVIRONMENT

Boundary Air Quality Monitoring

- The Air Quality Dashboards for April and May are available on the website. All monitoring results (metals and general dust) are well below Department of Environment and Science guidelines for April and May.
- Lennon Drive Station PM10 data and weather is now publicly available on the Department of Environment and Science Website.

Groundwater

- The Port received 20 responses to the water use survey delivered to 180 residences, and received 8 responses from initial letter box drop, testing 13 residential bores in total.
- The Port is working closely with the Department of Environment and Science and Queensland Health in undertaking the Preliminary Site Investigation (PSI). The PSI has extended slightly and is due for completion late July, the results of which will be made available to the public.

Telemetry Buoy Deployment

- The mooring has been deployed for the two Magnetic Island buoys.
- Deployment, repair and replacement are currently working around weather as well as availability.

30 YEAR STRATEGIC PLAN

- A draft of the Townsville Port 30 Year Strategic Plan was presented to the board last week and received positive feedback. The project team is now working on the next stages, including a print document, interactive maps, and flyover video with the view to publish by September.

TOWNSVILLE CRUISE SHIP COMMITTEE

- Townsville welcomed two cruise ships in June, *Pacific Aria* on the 11th and *Silver Discoverer* on 21st. The latter was the first expedition-type ship visit to Townsville
- Next cruise ship is due at the end of August – *Pacific Aria*.
- A full "turnaround" trial for the *Pacific Eden* visit in September has been scheduled for 18 July.
- The Port has received its first berth application for a cruise ship longer than 238 metres in length, scheduled to arrive in February 2021.

STAKEHOLDER ENGAGEMENT/COMMUNICATION AND EVENTS

- The Port hosted four community port tours during June and two schools.
- The Port of Townsville will host an open day in June 2019, preliminary planning has begun with stakeholders.

- Indonesia Ports Corporation will visit Townsville in mid-July as part of the Sister Port Arrangement. Corporate Affairs are coordinating a 3 day itinerary.
- Sharon Hoops participated in a Tourism and Sports roundtable event arranged by YWAM/TEL; brainstorming tourism & sport opportunities between Townsville and Papua New Guinea.
- Treasurer Jackie Trad and Minister Mark Bailey visited the port during June (separately) to discuss the budget, port infrastructure projects and renewable trade projects.
- The Kennedy Energy Park/Townsville Port Community Open Day takes place this Sunday 1st July between 10am and 2pm.

Great Barrier Reef Museum of Underwater Art

Port of Townsville Community Committee 27 June 2018

Dr Adam Smith

Board Member, MoUA Ltd



Atmospheric



Engaging



Educational



Jason de Caires Taylor

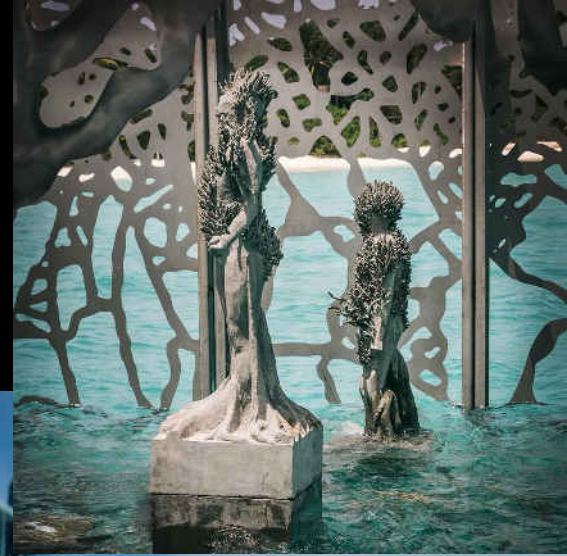


Lessons and inspirations from Mexico

Museo Subacuatico de Arte Musa

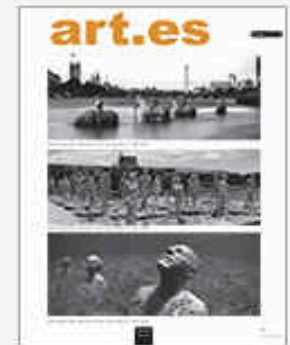
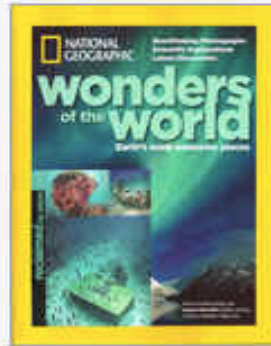


Inspirations from Maldives Coralarium



World renown

News & Press : Features



Funding update

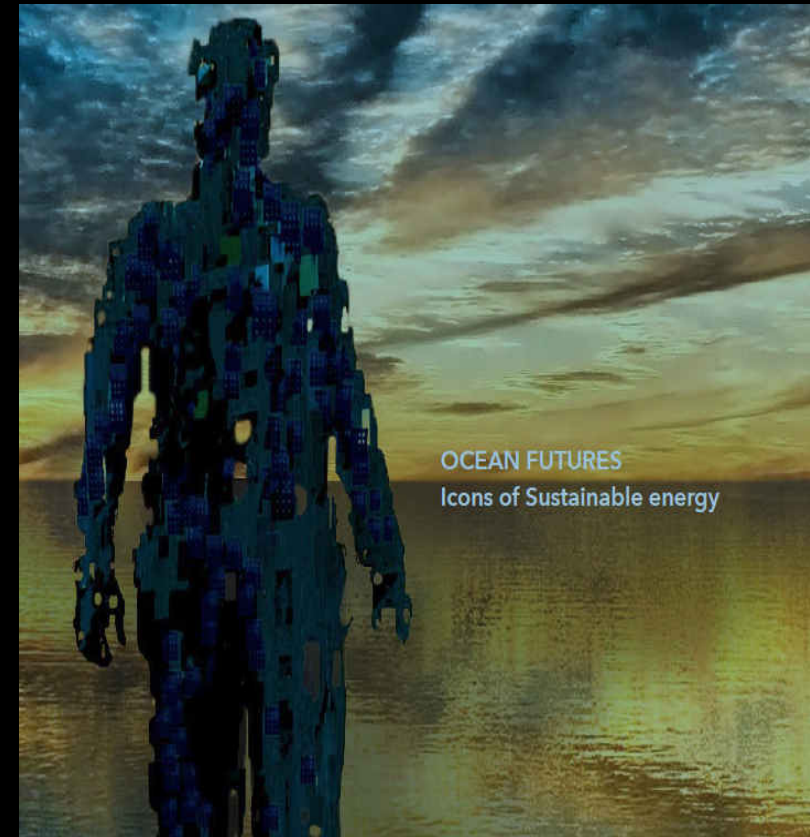
- \$2M secured from State Government
- \$750K from private sector
- Building Better Regions Fund *application* \$5M
(outcome expected in late Aug\Sep)

Implementation Plan



Stage 1 – The Strand

- Planned January 2019
- Require approvals from Townsville City Council
- Consultation with Council, artists and community
- Signature piece for MoUA - 500,000 Strand visitors



Implementation Plan



Stage 2 – John Brewer Reef

- Unprecedented scale
- “Ocean Futures” theme
- Focal tourism site
- Diving/snorkelling
- Managed access
- 30,000-50,000 visitors/yr



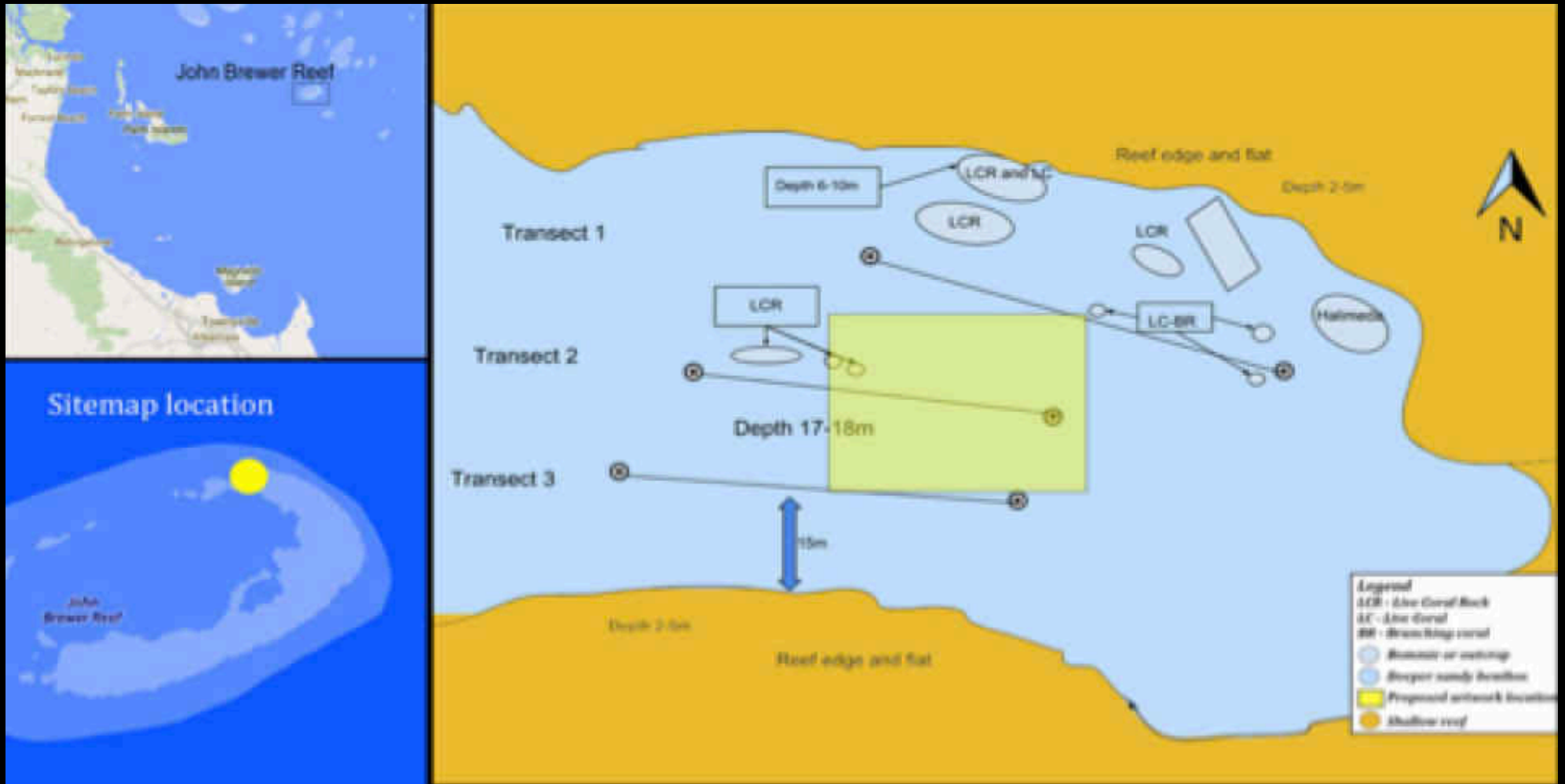
Site assessment- May 2018



Preliminary results

- 99% sand habitat
- No coral
- Fish- 50% less diversity and 80% less abundance than controls
- Invertebrates- 90% less abundance than controls

Site map and possible footprint



Opportunity

Great Barrier Reef Learning Trail



Opportunity

Science, art, education

- Monitoring sensors
- 360 virtual reality
- Citizen science
- Reef restoration



Implementation Plan



Stage 2 – Palm Island

- Close to Palm Island
- Access requires Palm Is guide + tourism operator
- Management contract with Palm Island community = economic benefits
- 10,000-50,000 visitors/yr



Implementation Plan



Stage 3 – Magnetic Island

- Freely accessible by 250,000 visitors to Magnetic Island
- Link to existing trails
- Above water elements
- Reef Science theme
- 50,000 visitors/yr



Concept Only

Ingredients for success

- Ongoing consultation
- Additional fundraising
- Permit & approvals
- Contracts
- Logistics
- Partners



Further information



- Paul Victory (SeaLink)
- Bridget Woods (TEL)
- Paul Marshall (Reef Ecologic)
- Vanessa Canon (JCU)
- Adam Smith (Reef Ecologic)

www.MoUA.com.au