

Townsville Port Community Liaison Group Minutes of Meeting

Date: Wednesday 2 May 2018 – 5pm
Venue: Peppers Blue on Blue, Magnetic Island
Chair: Ranee Crosby, CEO, Port of Townsville

Attendees

1	Adam Hinks	Community Rep	8	Keith Noble	Community Rep
2	Annie Ilett	POTL, Magnetic Island Community Engagement Officer	9	Ken Dunlop	Sunmetals
3	Heath Hatfield	Community Rep	10	Kim Gebers	POTL, Manager Infrastructure
4	Ian Ferguson	Community Rep	11	Leon Kippin	Community Rep
5	Janet Robino	Birdlife Townsville	12	Paul Crocombe	Community Rep
6	Judy Newman	Community Rep	13	Ranee Crosby	CEO, POTL
7	Julie Carmody	Magnetic Island Residents & Ratepayers Association	14	Sharon Hoops	POTL, Manager Corporate Affairs

Apologies

Adam Smith	Local Marine Advisory Committee	Melinda Loudon	POTL, Environment & Planning Manager
Brendon Nolan	Community Rep	Norman Rains	Birdlife Townsville
Chris Miegel	Community Rep	Sharon Marks	Conservation Volunteers Australia
David Zammit	Glencore	Stephen Ellis	Community Rep
Lloyd Whitby	Community Rep	Vern Veitch	Community Rep

Actions Summary

1. POTL to advise when the Water Quality Frequently Asked Questions document is posted on the POTL website.
2. Circulate the media release regarding the Expression of Interest for development of the Cultural Centre/Reef HQ Precinct to CLG members when it becomes public.
3. POTL to provide more information about DMPA siting when records from the government regulators and the science behind the DMPA site historic decision are made available.
4. POTL to obtain information on the tracks of ships entering/leaving the Port.

Attachments

- Port Update Notes
- History of Dredge Material Placement Area presentation

1. Welcome/apologies (Chair)

Chair Raneë Crosby welcomed members to the CLG's twelfth meeting. Apologies for tonight's meeting were noted. Lloyd Whitby has tendered his resignation from the CLG due to work and family commitments at the current time. He has enjoyed his involvement with the CLG and wishes to continue to receive information about the Port's activities.

2. Record of previous meeting held 28 March 2018

The Minutes of the previous meeting were adopted without change. All actions have been completed or were addressed at this meeting.

3. View sites for deployment of water quality monitoring buoys

CLG members travelled by local Magnetic Island Best Bus Tours to view sites for deployment of water quality monitoring buoys at Arthur Bay and Geoffrey Bay.

The best mooring options for the Magnetic Island buoys, *Endeavour* and *Beagle* are currently being finalised prior to their deployment, together with preventing damage to the sonar and navigation radar and lighting upgrades.

It was recognised that, due to the depth of water required for the water quality monitoring buoys, they could not be placed directly at tourism snorkelling sites.

CLG members also observed the snorkel trail at Geoffrey Bay and the support that is given to the Magnetic Island tourism industry in assisting with the production of the snorkel trail cards.

4. Water Quality Frequently Asked Questions

The document has been finalised taking into account all CLG members' collective feedback and is now at the designers. It is planned to be available on the POTL website next week.

Action: POTL to advise when the Water Quality Frequently Asked Questions document is posted on the POTL website.

5. Reef HQ Precinct Plans and discussion

Raneë Crosby advised that an Expression of Interest for development of the Reef HQ Precinct will be made public by the end of the week inviting proposals to develop a showcase facility for marine science in Townsville city and a new cultural centre with linkages to connected walkways along the creek frontage.

Action: Circulate the media release regarding the Expression of Interest for development of the Cultural Centre/Reef HQ Precinct to CLG members when it becomes public.

6. History of the Dredge Material Placement Area

Kim Gebers presented the options that are taken into consideration when deciding where to place dredge material (see attached presentation). POTL has requested access to the records of the various government regulators and scientific organisations involved in the 1993 decision about the site of the current Dredge Material Placement Area (DMPA).

Members asked if the DMPA had to stay within Port limits (i.e. outside the Great Barrier Reef Marine Park), or could be moved to the north of Magnetic Island. Other discussion revolved around the size of the current DMPA, seasonal impacts, the effects of an increase in volumes of maintenance dredge

material following the widening of the channel and resettlement time for capital dredge material placed in the Port's reclamation area.

POTL advised that while it may be possible to move the DMPA to another location, this would involve a very complex process and would need all government regulators and detailed scientific investigations and evidence to support such a move. POTL sees the first step is to establish the historic reasons as to why the current DMPA site was chosen, as extensive investigations were completed in selection of the current location.

Action: POTL to provide more information when records from the government regulators and the science behind the DMPA site historic decision are made available.

7. Port Updates – as per circulated document (attached)

- Funding for the channel widening project is expected to be resolved as soon as possible.
- Two cruise ships are in the Townsville Port next week: the luxury cruise *MS Insignia* cruising from Beijing to Sydney with some 800 passengers on board due on Sat 5 May and the P&O family cruise ship *Pacific Aria* travelling from Brisbane to Brisbane via the Pacific Islands, due in Townsville on Tuesday 8 May. A warm Townsville welcome is planned for both ships.

8. General Business

- Paul Crocombe advised that ships departing the Port seem to take a short cut out of the channel towards Cape Cleveland, crossing the DMPA and causing plumes of sediment. He enquired as to whether ships should be advised to remain in the channel when accessing or leaving Townsville Port.

Action: POTL to obtain information on the tracks of ships entering/leaving the Port.

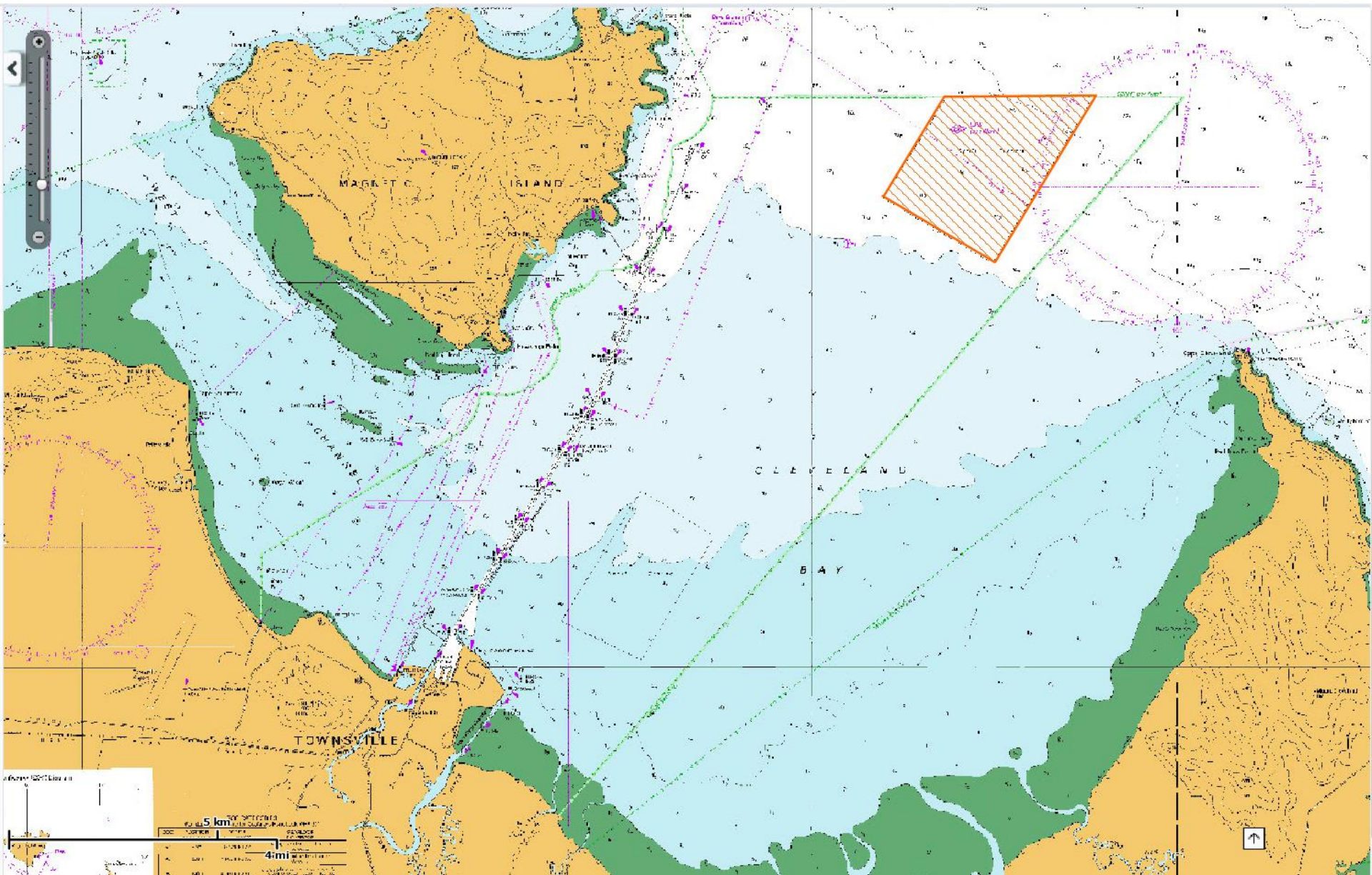
- Keith Noble enquired as to whether POTL is looking at accessing any of the Great Barrier Reef funding recently announced by the Federal Government. The Chair advised that POTL is looking at any funding that might be redirected to marine research that might help our region.

Next meeting: Wednesday 30 May 2018 at 5pm at REEFVTS, Ross Street, South Townsville

Meeting closed 6.35pm



Dredge Material Placement Area





- Annual maintenance dredge volume approx. 450,000m³
- Trailer Suction Hopper Dredge, Cutter Suction Dredge and Mechanical Dredge
- Inner Harbour, Outer Harbour, Sea Channel, Platypus Channel, Marine Precinct, Ross River and Ross Creek
- Current maintenance disposal occurs both on land and at the Ocean Dredge Material Placement Area

Beneficial Reuse options include

- land reclamation;
- construction fill;
- mine rehabilitation;
- beach nourishment;
- shoreline protection and erosion control;
- soil improvement for agriculture, forestry, aquaculture or parks and recreation;
- habitat restoration; and
- landfill site capping.

Ross River

- High quantities of sands, good reuse properties
- Low PASS
- Relatively low volumes and 3-5 year return
- Limitations material to remain on port for port purposes

Mechanical dredge

- Low volumes
- Poor reuse properties
- PASS

Inner Harbour, Outer Harbour, Channels

- Materials dominated by unconsolidated silts and clays
 - Renders some options non viable outright eg. Beach renourishment
 - Dewatering (space, handling and transport)
 - Final engineering properties of material
 - Treatment required for a range of other options (eg to get to a typical topsoil you would need to blend 3x amount of sand with dredge material)

Options include

- land reclamation;
- construction fill (*Engineering properties*)
- mine rehabilitation;
- ~~- beach nourishment;~~
- ~~- shoreline protection and erosion control;~~
- soil improvement for agriculture, forestry, aquaculture or parks and recreation;
- habitat restoration; and
- landfill site capping.



- Salt content
 - Careful consideration required if final location is not in the tidal areas eg mine rehabilitation due to potential ground and surface water impacts
 - Renders some options non viable without significant treatment eg. agriculture, forestry, aquaculture or parks and recreation
 - Dewatering (space, handling, transport and washing)

Options include

- land reclamation;
- construction fill (*Engineering properties*)
- mine rehabilitation (*careful consideration*);
- ~~— beach nourishment;~~
- ~~— shoreline protection and erosion control;~~
- ~~— soil improvement for agriculture, forestry, aquaculture or parks and recreation;~~
- habitat restoration (*careful consideration*); and
- landfill site capping.



- Volume approx 450,000m³ annually
 - Renders some options non viable outright eg. Landfill capping
 - Dewatering (space, handling, transport and return rate)
 - Final engineering properties of material (engineering treatment – impacts return rate)

Options include

- land reclamation;
- construction fill (*Engineering properties*)
- mine rehabilitation (*careful consideration*);
- ~~— beach nourishment;~~
- ~~— shoreline protection and erosion control;~~
- ~~— soil improvement for agriculture, forestry, aquaculture or parks and recreation;~~
- habitat restoration (*careful consideration*); and
- ~~— landfill site capping.~~

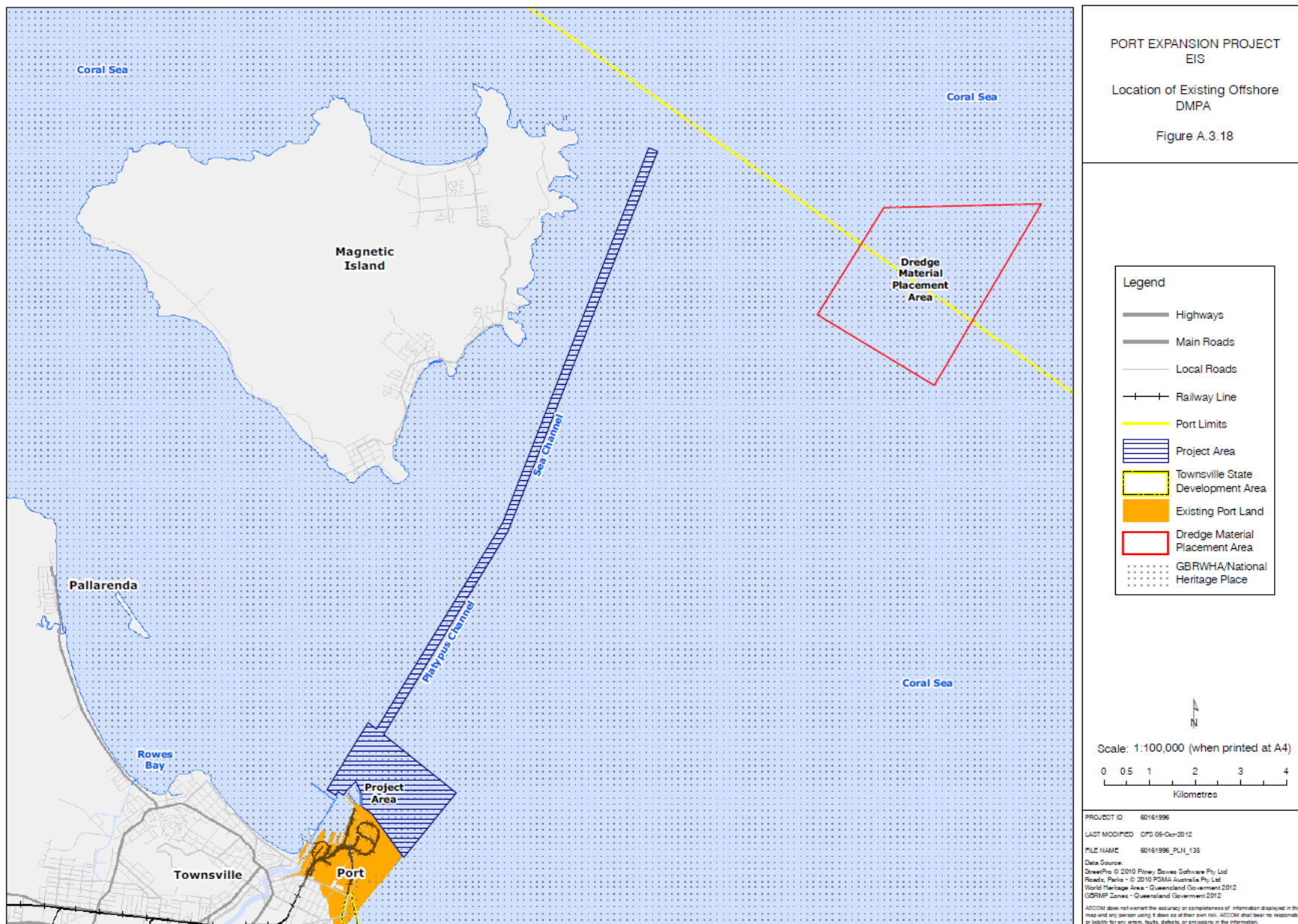
Options include

- land reclamation;
- construction fill (*Engineering properties*)
- mine rehabilitation (*careful consideration*);
- habitat restoration (*careful consideration*)

Other than reclamation the limitation of suitable available land to dry and manage the material limit these as viable land based options currently



- Capacity
- Seabed Substrate
- Dispersal / Resuspension
- Ecological Habitats
- Fisheries
- Shipping
- Planning / Amenity
- Project Cost
- Proximity





1993 – below 10m contour





- Minimise dredging where possible
- Beneficially reuse good quality materials
- Long term dredging and dredge material management plan (currently being revisited)
- Monitor technology and opportunities
- Monitor and work with regulators regarding barriers if present
- Increase knowledge and research
- Revisit options as appropriate

Port of Townsville Community Liaison Group Updates – April 2018

Trade and Cargo

- Results for the end of the third quarter at Port of Townsville are encouraging. The highlights, in comparison to end of Q3 in the previous financial year, include:
 - 6% increase in arrivals to Port
 - 24% increase in vehicle imports, and a
 - 74% increase in container trade.
- 2015 Container record smashed in early April with over 65,000 Containers handled through Townsville Port. Current estimates are a new record will be set around the 80,000 Container mark.
- Key exporters, potential exporters, producers and other stakeholders important to the optimal supply chain function from the Central Highlands region toured Port of Townsville on Monday 30 April. The Central Highlands Development Corporation, with partner Department of Agriculture and Fisheries) met with key contacts at the Port to establish current Port capabilities/capacity and discuss future agribusiness capability required.
- POTL continues to engage with growers and logistics service providers in far north Queensland to develop sea-freight export supply chains for horticultural produce. Meetings were held earlier this month with mango, citrus and avocado growers and freight forwarding agents on-farm in the Dimbulah/Mareeba district. Substantial land acquisition for new plantations of mango, avocado, lime and lemon in these regions, combined with strong capacity and interest to expand current domestic supply to international markets, holds significant potential for the development of north Queensland sea-freight supply chains. Export of these commodities is expected to ramp-up progressively over the next 5 years as young fruit trees mature. Small shipments (2-5 TEUs) are expected towards the end of 2018 and POTL will continue to work closely with growers/freight forwarders to ensure sea-freight is a long-term, viable option for export.
- POTL will be presenting at the 2018 Burdekin Export Forum which is intended to provide regional growers with information on emerging markets and international opportunities, as well as supply chain information to expand their markets to include export. The forum will also provide practical experiences and case studies from other businesses to provide an insight into doing business internationally.
- Consul Jiang Jiqing, Director of Economic and Commercial Office, from the Chinese Consulate Office in Brisbane visited POTL in early April. The delegation discussed trade and investment opportunities.

Channel Capacity Upgrade (Port Expansion Project) (CCU)

- The Port's CCU team are finalising the review and analysis of the conditions of the approvals, with a view to developing scopes for the required studies to commence ASAP.
- An expression of interest was released last month for supply of armour rock required for the project; the submissions received are currently under consideration.

Environment

Boundary Air Quality Monitoring:

- All monitoring results (metals and general dust) are well below DES guidelines, although there is a trend of increasing general dust levels at the Enviro Park site. POTL has reviewed and improved the road sweeping regime in this area (it is believed that a significant proportion of the dust results from road traffic re-mobilising material on the road).

Telemetry buoy deployment:

- There has been ongoing work with the supplier to enhance buoy performance and improve deployment systems (safety). Upgraded lights, flotation cell and radar reflectors have been ordered. Mooring design/selection is underway.

30 Year Strategic Plan

- The Strategic Plan continues to progress well, with the draft on schedule to be finalised in draft form for presentation to the POTL Board in June.
A presentation on the draft plan will be provided to the CLG at its 30 May meeting for feedback.

Townsville Cruise Ship Committee

- The CA team have visited Charters Towers and Magnetic Island in recent weeks and provided information to tour operators on product development.
- Two cruise ships are expected in May – *MS Insignia* on Sat 5th and *Pacific Aria* on Tuesday 8th May
- A Wulkurugaba traditional owner artist will be present for the next two cruise ships.

Stakeholder engagement/communication and events

- A new Port Overview brochure and an updated version of the Channel Capacity Upgrade brochure was released in April.
- The April edition of the community newsletter was distributed last week.
- A community survey is currently underway regarding a possible Port Open Day in 2019.