

townsville harbour board



ANNUAL FINANCIAL REPORT
and CARGO STATISTICS
1976-1977



board members

A. G. FIELD

Chairman (Queensland Government)

T. H. A. TITLEY, M. C.

Deputy Chairman (City of Charters Towers)

J. P. DEFRANCISCIS

(Shire of Ayr)

A. J. HOPE

(Queensland Government)

J. B. MATTHEWS

(Shires of Dalrymple & Thuringowa)

A. McGRADY

(City of Mount Isa)

K. V. McELLIGOTT

(City of Townsville)

E. S. P. NETTERFIELD, O. B. E.

(Shires of Flinders, McKinlay and Richmond)

A. W. SHIELD

(Queensland Government)

A. A. TICEHURST

(Shires of Cloncurry, Winton & Boulia)

P. J. R. TUCKER

(City of Townsville)

senior officers

I. G. MALPAS, B. Com., A. A. U. Q., A. A. S. A., A. C. I. S.

(Secretary and Chief Executive Officer)

W. S. SERVICE, B. E. (C. Eng.), M. I. C. E., M. N. Z. I. E.

(Engineer)



*Mr. H. J. Taylor retired
after 44 years.*



*Mr. I. G. Malpas
appointed.*

Administration Office —

1 The Strand, Townsville Q4810

Telephone (077) 72 1011 — Cables "Nausport"

Cover Illustration:

*Scan Austral vessels operate through
Townsville on a regular schedule, loading
Refined Minerals, wool, frozen meat and
general cargo for European Ports.*

*With stern ramp loading facility in conjunction
with container crane operation, Scan Austral
ships make a quick turn-around in Townsville.*

chairman's message

The year ended 30th June, 1977, the first of the present Board's triennium, has seen major changes, both in the constitution and the management of the Board.

Following upon the election of City and Shire Councils within its district, the new Board was reconstituted on 17th July with Messrs. P. J. R. Tucker and K. V. McElligott replacing the two former representatives of the Townsville City Council and Mr. J. P. Defranciscis replacing the former representative of the Shire of Ayr.

Following the transfer away from the Board's district of one of the two Queensland Government's representatives, the Government increased the number of non-elective members to three and appointed Mr. A. J. Hope, a former Deputy Chairman, and Mr. A. W. Shield to fill the vacancies on the Board.

The Manager, Mr. H. J. Taylor, retired on 30th June after 44 years of service and the Secretary, Mr. I. G. Malpas, was elevated to the Chief Executive position.

The year under review has been an extremely busy one in respect of both development and trade. Improved facilities provided in recent years such as the installation of the container crane, deepening and widening of the access channel, improved berth depths and reconstruction of old timber wharves with modern concrete structures has made Townsville a most popular port for vessels wishing to load and discharge full cargoes and to top off their cargoes loaded at other ports before proceeding overseas.

There remains, however, much more work to be done to keep pace with modern shipping demands and the Board has commissioned expert advisers to recommend guide lines for future port development.

In the field of staff training, the Board has taken advantage of every opportunity to send its senior technical and administrative staff to conferences and seminars which would assist them in their professions.

Revenue increased by 15% on last year's figures to a record \$3,199,021 whilst operating expenditure amounted to \$2,248,198.

Cargo throughput also constituted a new record showing an increase of 13.87% on last year. Of the 2 551 289 tonnes handled, 974 589 tonnes was imported and 1 576 700 tonnes exported.

These results have been achieved by a splendid team effort and I would like to thank the members of the Board and all staff for their ready co-operation and continuing loyalty.

A. G. FIELD,
CHAIRMAN.



port operation

FACILITIES

Within the Harbour there is accommodation for nine major vessels at berths ranging in length from 160m to 256m. Depths alongside vary between 7.0m and 12.40m. Specialised facilities are provided for handling bulk liquids, raw sugar, mineral concentrates and ores whilst a 55 ton container crane, a 25 ton jib crane, a stern ramp and a specially reinforced landing pad for stern angle ramps cater for container and unit load traffic. A modern fleet of mobile cargo handling equipment ensures speedy land based and shipboard movement of cargo. Three container terminals offer around the clock service.

All berths are accessible by road and three are directly integrated with the State railway system. Bunkering through pipelines may be carried out at three berths whilst fresh water, electricity and telephone outlets are at all berths.

Towage and ships' lines services are provided by a licensee. Collection and incineration of garbage is carried out daily.

Fire fighting and oil spillage control equipment is readily available.

V. H. F. radio (continuously monitored) maintains contact with shipping, tugs and the pilot launch.

A Port Information booklet containing details of all port services and charges is available upon application.

TRADE OF THE PORT

Cargo handled for the year ended 30th June, 1977 amounted to 2 551 289 tonnes, an increase of 310 721 tonnes or 13.87% on last year, establishing an all time record. Imports totalled 974 589 tonnes and exports 1 576 700 tonnes.

On an industry basis, the mining industry was the largest port user with 871 294 tonnes of product, followed closely by the oil industry with 870 821 tonnes and the sugar industry with 647 906 tonnes. However, on a revenue basis, the Oil industry contributed 37%, the mining industry 29% and the sugar industry 23%. Other industries contributed the remaining 11%.

Cargo vessels which entered the port during the year numbered 351, with gross registered tonnage of 3 327 368. This was 8 vessels more than last year and the aggregate tonnage was 416 515 greater, confirming the trend to carry larger cargoes in bigger ships. The efficiency of the port turned vessels around with an average stay of 1.75 days compared with 1.85 days last year.

Shipping statistics which appear elsewhere in this report indicate that three records were broken this year:

M. T. "BRAMORA" discharged 56 506 tonnes of bulk oil, a new record import.

M. V. "E. R. SCALDIA" loaded 33 563 tonnes of Mount Isa minerals, a new export record.

M. T. "EDWARD STEVINSON" arrived drawing 12.04m, a new draft record.



Russian Ships, operate a regular fortnightly schedule as the Fesco Line service through Townsville to West Coast American Ports and Japan. They load nickel, copper, frozen beef, hides & meatmeal and general containerised cargo.

development projects

DREDGING

Developmental dredging was carried out in the channels and swing basins and at the berths using both the Board's and contractors' plant. An amount of \$624 428 was expended on this work during the year.

WHARVES

Reconstruction of No. 2 Berth, Stage 2B was completed and a tender accepted for Stage 2C. The total estimated cost is \$2,700,000. Work was commenced on a 55m long breakwater in Ross River to protect wharves to be erected at the fish processing plants site; \$55,000 has been budgeted for this project.

BUILDINGS

Two mobile, air conditioned crib rooms with hot and cold water and dining facilities were installed at No. 3 Berth at a cost of \$39,073.

A new sub-station and toilet block building was completed at No. 3 Berth and a contract let for a similar structure at No. 2 Berth at a total cost of \$66,451. The upper sections of the buildings house electrical equipment to keep it above storm surges.

ROADS

A new access road to the public boat ramp was constructed to replace the extension of King Street which has been closed to provide an area to be incorporated in a new Yacht Club building. Expenditure on the new road was \$25,240.

PORT SERVICES

Closed circuit television equipment and

replacement of obsolete V. H. F. radio equipment costing \$26,070 was installed in the Port Control tower.

SMALL CRAFT FACILITIES

A new steel pontoon was constructed and placed at the public boat ramp area at a cost of \$5,368.

A two lane small boat launching ramp was constructed in Ross River. The Department of Harbours & Marine provided funds of \$13,156 from the Small Craft Facilities Trust Fund for this work.

OIL SPILLAGE EQUIPMENT

A new dory costing \$18,954, powered by air cooled diesel motors for both propulsion and dispersant spraying was added to the oil spill recovery and dispersal plant.

MAINTENANCE

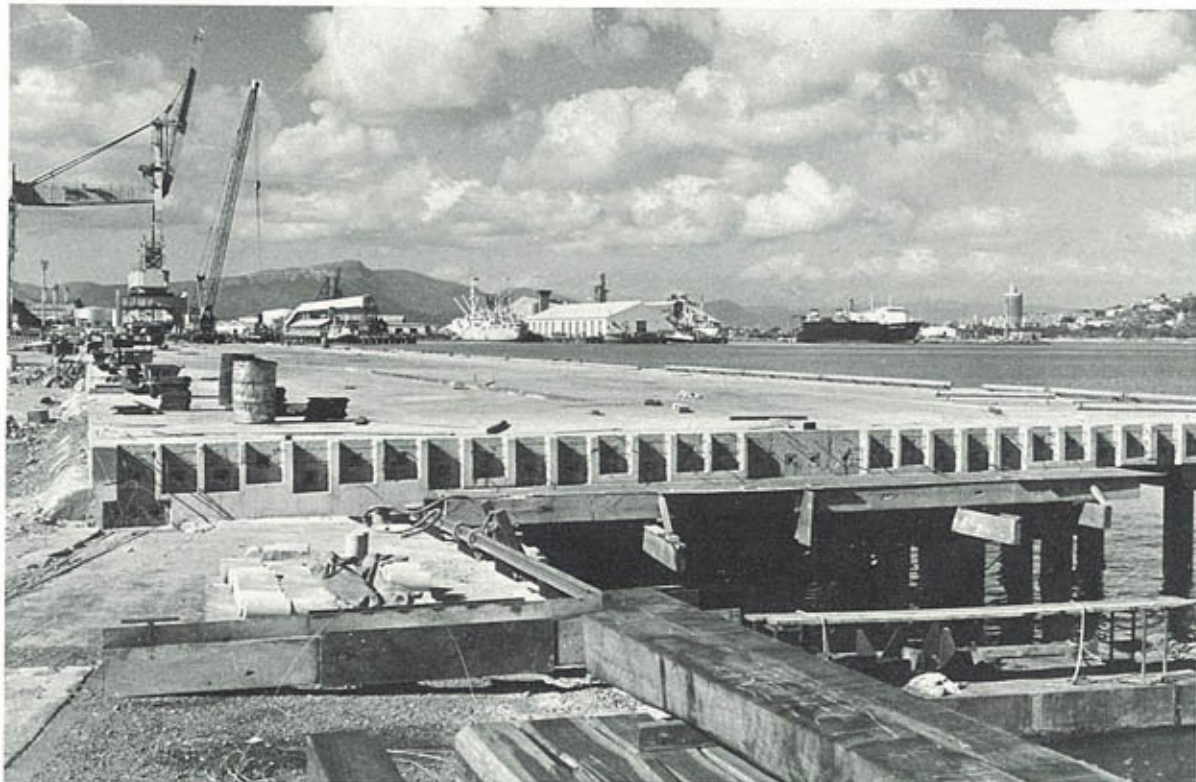
WHARVES, BUILDINGS, ROADS, RAIL LINES AND PLANT

Wharf berths have been adequately maintained, sheds and buildings repaired and painted as required, roads patched and resurfaced and rail lines kept in good condition.

Floating plant has been slipped periodically and repairs effected to comply with survey requirements.

PORT BEAUTIFICATION AND CLEANING

Particular attention has been given to keeping the environs of the port in a clean and tidy condition. Tree planting, grassing and installation of sprinkler systems have been carried out.



Reconstruction of the No. 2 berth nearing completion will give an extended traverse for the Container Crane of 286 metres.

TOWNSVILLE HARBOUR BOARD

RECEIPTS & PAYMENTS**1976**\$
(219,202)

2,026,849
459,072
29,863
242,453
45,496
87,201
24,253
241,056
...
101,372
309,925
13,377

3,580,917

3,361,715

360,443
525,705
93,350
46,923
44,136
82,977
111,532
550,922
473,403
380,145
309,925
352,035

3,331,496

\$ 30,219

Statement for the year ended 30th June

HARBOUR FUND

Balance 1st July

Receipts

Harbour Dues
Tonnage Rates
Channel Development Charge
Rents
Plant Hire
Water & Electricity Charges
Interest on Investments
Other Operating Receipts
Non Operating Revenue
Advances for Container Crane
Advances from Assets Fund
Asset Retirements

Sub-Total

Payments

Administration
Dredging
Wharves Maintenance
Lands & Tenancies
Plant Hire
Wharf Supervision
Water & Electrical Services
Interest
Other Operating Costs
Loan Commitments
Transfers to Assets Replacement Fund
Capital Expenditure

Balance 30th June

1977\$
30,219

2,364,700
519,689
47,277
206,246
27,977
106,224
72,915
72,091
17,595
11,410
535,417
4,851

3,986,392

4,016,611

422,983
500,923
85,721
52,151
52,609
83,960
148,141
689,028
583,423
405,167
535,417
498,358

4,057,881

\$ (41,270)

ASSETS REPLACEMENT & IMPROVEMENT FUND (AS PART OF HARBOUR FUND)

Balance 1st July

131

Receipts

Transfers from Harbour Fund

535,417

Sub-Total

535,548

Payments

Advances to Harbour Fund

535,417

535,417

Balance 30th June

\$ 131

LOAN FUND

Balance 1st July

536,815

Receipts

Debenture Loans
Interest
Conversion & Renegotiation of Existing Loans

800,000

57,189

169,199

1,026,388

Sub-Total

1,563,203

Payments

Molasses Terminal
Sugar Drier Stations
Reconstruction No. 2 Berth
Transfer of Interest to Harbour Fund
Conversion & Renegotiation Loans

3,491

13,436

950,713

57,189

169,199

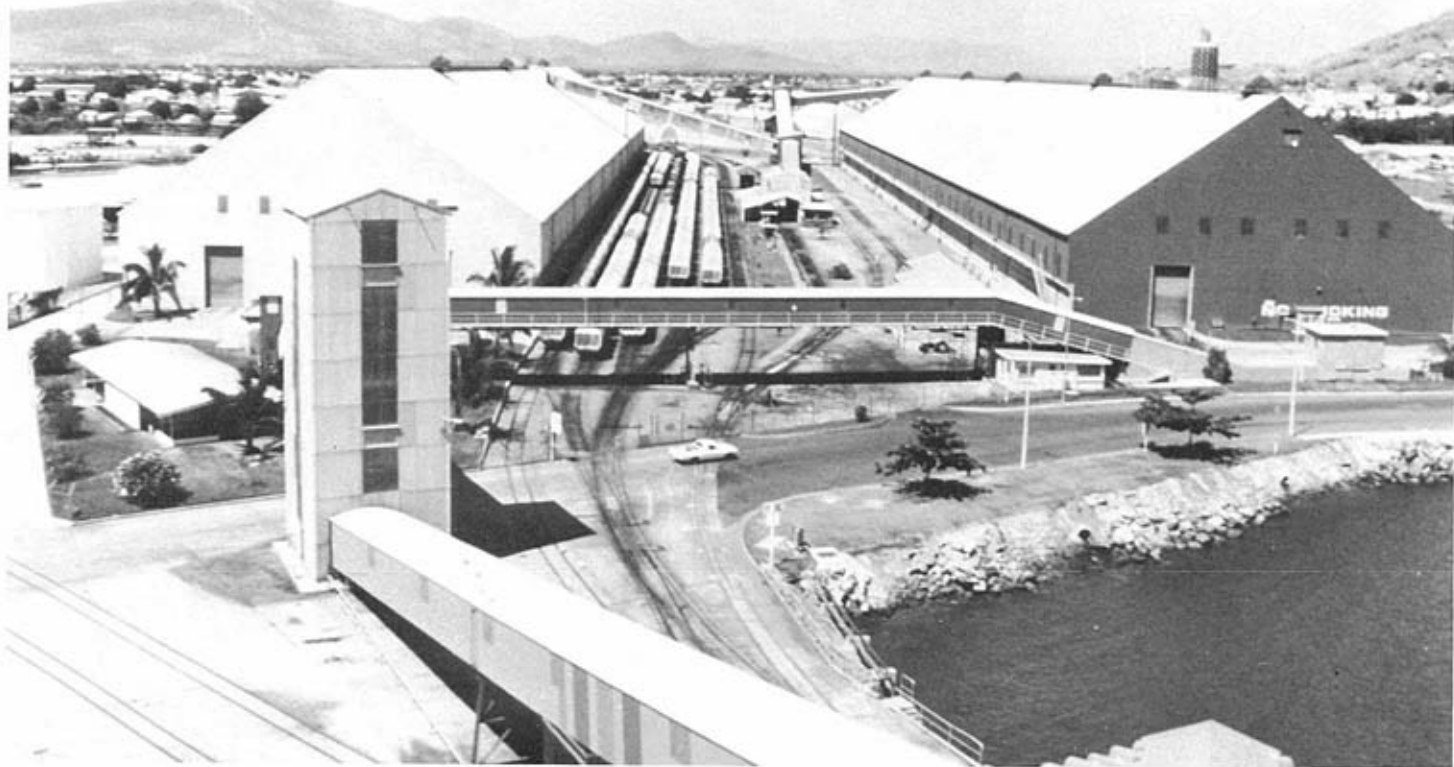
1,194,028

Balance 30th June

\$ 369,175

SOURCE & APPLICATION OF FUNDS

1976	For the Year Ended 30th June	1977
\$	HARBOUR FUND	\$
	Source	
1,182,610	Operating Profit for Year	963,267
284,982	Depreciation Written Off	278,421
1,626,930	Special Advances & Loans Received	1,037,700
3,170	Assets Retirement Surplus (net)	4,709
...	Decrease in Investments	169,000
...	Decrease in Liquid Assets	68,144
<u>\$3,097,692</u>		<u>\$2,521,241</u>
	Application	
2,084,997	Investment in Fixed Assets	1,707,040
427,827	Increase in Investments
132,093	Increase in Current Assets	53,782
408,210	Redemption of Loans & Advances	604,828
44,565	Decrease in Current Liabilities	155,591
<u>\$3,097,692</u>		<u>\$2,521,241</u>



Sugar loading facilities have been upgraded to give a loading rate of 1,500 tonnes per hour from a storage of 290,000 tonnes.

IMPORTS Australia TONNES

PORT	Oil G.P.	Oil G/ Vale	General	Steel	Timber	Fertilizer	Gypsum	Trans- Ship	Total
INTRASTATE									
QUEENSLAND									
Brisbane	275 382	...	1 198	10 714	...	1 038	288 332
Palms Area	592	592
Weipa	299	299
SUB-TOTAL	275 382	...	2 089	10 714	...	1 038	289 223
INTERSTATE									
NEW SOUTH WALES									
Port Kembla	462	462
Newcastle	9 156	9 156
Sydney	21 586	...	12 728	5 953	6	40 273
SUB-TOTAL	21 586	...	12 728	6 415	6	9 156	49 891
VICTORIA									
Geelong	85 244	29 284	114 528
Melbourne	13 658	168	17	13 843
Westernport	7 852	7 852
SUB-TOTAL	93 096	29 284	13 658	168	17	136 223
TASMANIA									
Bell Bay	10	10
Burnie	529	529
SUB-TOTAL	539	539
SOUTH AUSTRALIA									
Port Stanvac	8 068	8 068
Thevenard	5 038	...	5 038
SUB-TOTAL	8 068	5 038	...	13 106
TOTAL IMPORTS AUSTRALIA	398 132	29 284	29 014	6 583	23	19 870	5 038	1 038	488 982

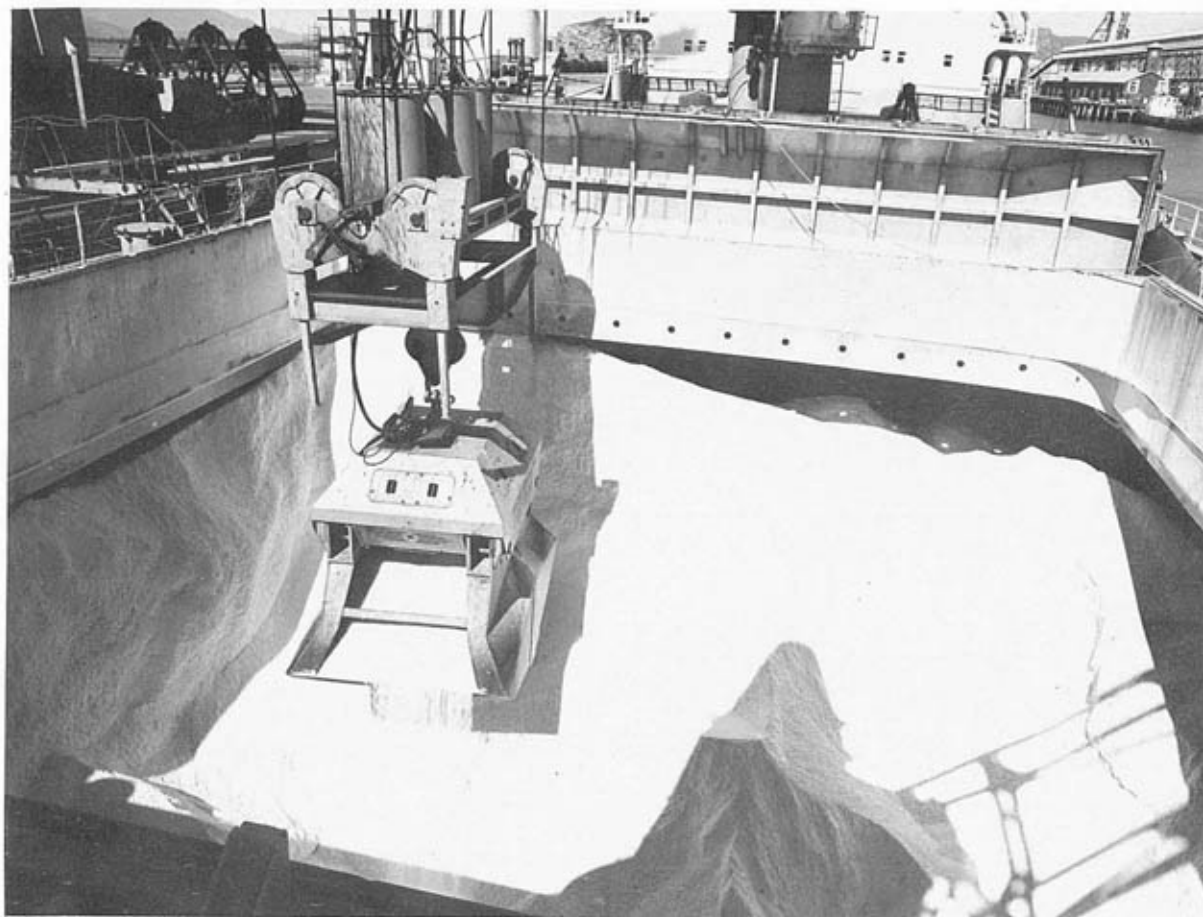
IMPORTS Overseas TONNES

PORT	Oil G.P.	Oil G/ Vale	General	Steel	Timber	Fertilizer	Gypsum	Trans- ship	Total
CANADA									
St John	7 207	7 207
Vancouver	18 586	18 586
SUB-TOTAL	7 207	...	18 586	25 793
SWEDEN									
Gothenburg	22	62	84
SUB-TOTAL	22	62	84
FINLAND									
Kota	469	300	769
SUB-TOTAL	469	300	769
DENMARK									
Copenhagen	9	9
SUB-TOTAL	9	9
UNITED KINGDOM									
Liverpool	257	257
London	3	3
SUB-TOTAL	260	260
GERMANY									
Bremen	509	509
Hamburg	490	490
SUB-TOTAL	999	999
NETHERLANDS									
Rotterdam	948	948
Vlissingen	6	6
SUB-TOTAL	954	954
BELGUIM									
Antwerp	246	246
SUB-TOTAL	246	246
ITALY									
Porto Torres	13 728	13 728
SUB-TOTAL	13 728	13 728
SAUDI ARABIA									
Bahrain	28 968	28 968
SUB-TOTAL	28 968	28 968
IRAQ									
Abadan	3 397	3 397
SUB-TOTAL	3 397	3 397
IRAN									
Bandarmarshar	7 774	7 774
SUB-TOTAL	7 774	7 774

IMPORTS Overseas

TONNES (cont.)

PORT	Oil G.P.	Oil G/ Vale	General	Steel	Timber	Fertilizer	Gypsum	Trans- ship	Total
MALAYSIA									
Singapore	58 619	322 951	381 570
SUB-TOTAL	58 619	322 951	381 570
JAPAN									
Hiroshima	1 559	1 559
Kobe	65	65
Moji	10 500	...	10 500
Nagoya	4 986	4 986
Yokohama	2 227	2 227
SUB-TOTAL	8 772	65	10 500	...	19 337
NIUGINI									
Lae	761	266	1 027
Port Moresby	78	78
SUB-TOTAL	761	...	78	...	266	1 105
SOLOMON ISLANDS									
Honiara	12	...	602	614
SUB-TOTAL	12	...	602	614
TOTAL IMPORTS OVERSEAS	120 454	322 951	30 398	136	868	...	10 500	300	485 607
TOTAL IMPORTS	518 586	352 235	59 412	6 719	891	19 870	15 538	1 338	974 589



Sulphur from Vancouver is unloaded for Mary Kathleen using the Container Crane fitted with the alternative 7.6 m³ capacity tonne grab.

EXPORTS Australia TONNES

PORT	General	Steel	Timber	Sugar	Molasses	Meat	Hides	Tallow	By Products	Cattle
INTRASTATE										
QUEENSLAND										
Bamaga	24
Brisbane	126
Cairns	115
Palms Area	2 734	...	23	5
Thursday Island	42
Weipa	640
TOTAL	3 681	...	23	5
INTERSTATE										
NEW SOUTH WALES										
Port Kembla	6
Sydney	1 691	...	249	11 407	25 585	151	18
SUB-TOTAL	1 697	...	249	11 407	25 585	151	18
VICTORIA										
Geelong
Melbourne	2 503	6 851	...	94	...	1 015	36	...
SUB-TOTAL	2 503	6 851	...	94	...	1 015	36	...
TASMANIA										
Bell Bay	1
Burnie	8
Hobart	3
Launceston	1
Risdon
SUB-TOTAL	13
SOUTH AUSTRALIA										
Adelaide	137	...	6
SUB-TOTAL	137	...	6
WESTERN AUSTRALIA										
Fremantle	47
SUB-TOTAL	47
NORTHERN TERRITORY										
Darwin
SUB-TOTAL
TOTAL EXPORTS AUSTRALIA	8 078	...	278	18 258	25 585	250	18	1 015	36	...

EXPORTS Australia TONNES

Refined Copper	Lead	Dross	Concentrate Zinc	Copper	Rock Phosphate	Nickel	Trans- Ship	Total
...	24
...	3 073	3 199
...	300	415
...	2 762
...	42
...	640
...	3 073	...	300	7 082
43 588	3 287	46 881
9 423	48 524
53 011	3 287	95 405
...	11 359	11 359
13 168	23 667
13 168	11 359	35 026
64	65
...	8
...	3
192	193
...	74 487	...	1 918	76 405
256	74 487	...	1 918	76 674
1 204	1 347
1 204	1 347
181	10 475	10 703
181	10 475	10 703
...	1 038	1 038
...	1 038	1 038
67 820	74 487	...	30 112	...	1 338	227 275

EXPORTS Overseas TONNES

PORT	General	Steel	Timber	Sugar	Molasses	Meat	Hides	Tallow	By Products	Cattle
AMERICA - EAST COAST										
Albany	26 729
Baton Rouge	43 269
Wentworth	149 229
Willmington	1 141
SUB-TOTAL	149 229	69 998	1 141
AMERICA - WEST COAST										
Tacoma
SUB-TOTAL
CANADA - EAST COAST										
Montreal	52 439
St John	6 909
SUB-TOTAL	59 348
CANADA - WEST COAST										
Vancouver	42 154
SUB-TOTAL	42 154
NORWAY										
Bergen	18
Oslo	3	357	153
SUB-TOTAL	3	357	171
SWEDEN										
Gothenburg	2	768	217
Helsingborg
SUB-TOTAL	2	768	217
FINLAND										
Helsinki	131	110
SUB-TOTAL	131	110
UNITED KINGDOM										
Avonmouth
London	41
SUB-TOTAL	41
GERMANY										
Bremen	98
Hamburg	84	...	10	33	1 987
SUB-TOTAL	182	...	10	33	1 987
NETHERLANDS										
Rotterdam	9	6041	15
Vlissingen	16
SUB-TOTAL	9	6 041	15	16
BELGIUM										
Antwerp
SUB-TOTAL

EXPORTS Overseas TONNES

Refined Copper	Lead	Dross	Concentrate Zinc	Copper	Rock Phosphate	Nickel	Trans- ship	Total
...	26 729
...	43 269
...	149 229
...	1 141
...	220 368
...	...	4 959	4 959
...	...	4 959	4 959
...	52 439
...	6 909
...	59 348
...	42 154
...	42 154
...	18
...	513
...	531
499	3 434	...	4 920
1 602	1 602
2 101	3 434	...	6 522
...	241
...	241
...	15 063	15 063
24 802	142 942	919	...	168 704
24 802	158 005	919	...	183 767
...	98
1 453	43	...	3 610
1 453	43	...	3 708
18 017	6 503	299	...	30 286
7 261	11 227	...	18 504
25 278	6 503	10 928	...	48 790
1 204	11 505	12 709
1 204	11 505	12 709

EXPORTS Overseas TONNES (Cont.)

PORT	General	Steel	Timber	Sugar	Molasses	Meat	Hides	Tallow	By Products	Cattle
FRANCE										
Dunkirk	52	32
SUB-TOTAL	52	32
SPAIN										
Lisbon	31
SUB-TOTAL	31
ITALY										
Genoa	154
SUB-TOTAL	154
POLAND										
Gdynia	840	159
SUB-TOTAL	840	159
YUGOSLAVIA										
Koper	692
SUB-TOTAL	692
RUSSIA										
Black Sea Region	4 117
SUB-TOTAL	4 117
EGYPT										
Adabya	2 931
SUB-TOTAL	2 931
KENYA										
Mombassa	349
SUB-TOTAL	349
IRAN										
Khorramshahr	684
SUB-TOTAL	684
BANGLADESH										
Chittagong	550
SUB-TOTAL	550
MALAYSIA										
Kelang	76	1 100
Pasir Gudang
Prai	6 287
SUB-TOTAL	76	6 287	1 100
SINGAPORE										
Singapore	9 465	401
SUB-TOTAL	9 465	401

EXPORTS Overseas TONNES (Cont.)

Refined Copper	Lead	Dross	Concentrate Zinc	Concentrate Copper	Rock Phosphate	Nickel	Trans- ship	Total
12 585	488	...	13 157
12 585	488	...	13 157
...	31
...	31
...	55	...	209
...	55	...	209
...	999
...	999
...	692
...	692
...	4 117
...	4 117
...	2 931
...	2 931
...	349
...	349
...	684
...	684
...	550
...	550
...	1 176
...	18 753	18 753
...	6 287
...	18 753	26 216
...	9 866
...	9 866

EXPORTS Overseas TONNES (Cont.)

PORT	General	Steel	Timber	Sugar	Molasses	Meat	Hides	Tallow	By Products	Cattle
THAILAND										
Bangkok	3 222
SUB-TOTAL	3 222
INDONESIA										
Pare Pare	41	829
SUB-TOTAL	41	829
PHILIPPINES										
Busuanga	50	1 577
Manilla	5	1 424	5 184	...
Sangi
SUB-TOTAL	55	1 424	5 184	1 577
CHINA										
Hsing Hang	459
SUB-TOTAL	459
TAIWAN										
Taiwan
SUB-TOTAL
HONG KONG										
HongKong	214	...	47	41	118	...	16	3 803
SUB-TOTAL	214	...	47	41	118	...	16	3 803
KOREA										
Inchon	27 831
Ulsan	17 097
SUB-TOTAL	44 928
JAPAN										
Akita
Hickoshima
Horoshima	6 580
Kawasaki	207
Kobe	12	655	250	...
Miiki
Nagoya	89	150	...
Naoshima
Niigata
Niihama
Oita	35 473
Osaka	20
Onahama
Sakata
Toyama
Tokyo	2 981	167 349	7 211
Yokohama	3	90	...	4 098	512	...
Yokosuka	151
SUB-TOTAL	2 996	209 402	7 211	179	20	5 111	912	...
NIUGINI										
Anewa Bay	3 2 720
Port Moresby	155
SUB-TOTAL	158 2 720
TOTAL EXPORTS OVERSEAS	7 051	2 720	57	520 813	83 250	11 961	2 983	8 294	6 112	7 309
TOTAL EXPORTS	15 129	2 720	335	539 071	108 835	12 211	3 001	9 309	6 148	7 309

EXPORTS Overseas TONNES (Cont.)

Refined Copper	Lead	Dross	Concentrate Zinc	Concentrate Copper	Rock Phosphate	Nickel	Trans- ship	Total
...	3 222
...	3 222
...	870
...	870
...	1 627
...	6 613
...	5 996	5 996
...	5 996	14 236
...	459
...	459
...	137	137
...	137	137
...	4 239
...	4 239
...	40 026	67 857
...	17 097
...	40 026	84 954
...	52 994	52 994
...	34 806	34 806
1 382	6 580
...	496	...	2 085
...	2 572	...	3 489
...	40 247	40 247
...	239
...	13 054	13 054
...	10 999	10 999
...	5 500	5 500
...	35 473
...	20
...	9 998	16 937	58 721	85 656
...	32 399	32 399
...	79 836	79 836
4 828	177 541
...	4 932	...	14 463
...	151
6 210	154 544	29 991	170 956	8 000	...	595 532
...	2 723
...	155
...	2 878
73 633	158 005	4 959	172 552	29 991	235 868	23 867	...	1 349 425
141 453	158 005	4 959	247 039	29 991	265 980	23 867	1 338	1 576 700

SUMMARY OF IMPORTS TONNES

	1968	1969	1970	1971	1972	1973	1974	1975	1976	1977
General	40 617	45 826	58 298	53 367	72 824	84 835	117 481	94 253	109 243	59 412
Oil										
General Purpose	259 642	284 810	325 386	339 652	364 610	420 169	497 629	656 356	782 031	841 725
Bitumen										
Feedstock	15 721	21 533	12 850	13 327	20 738	20 598	15 590	23 219	19 222	19 994
Liquid Gas	5 447	4 936	6 300	8 435	7 099	8 311	8 362	9 047	8 359	9 102
	280 810	311 279	344 536	361 414	392 447	449 078	521 581	688 622	809 612	870 821
Coal & Coke	...	3 779	15 508	7 293	...	3 109	4 816	9 663
Fertilizer										
Bulk	9 319	8 750	...	3 498	5 406	8 763	5 822	3 036
Bagged	5 250	8 387	...	51	715	279	45
Liquid	10 383	10 255	10 538	9 956	13 778	18 017	23 723	21 844	19 783	19 870
	24 952	27 392	10 538	13 505	19 899	27 059	29 590	24 880	19 783	19 870
Iron and Steel	34 696	33 671	52 212	49 559	23 624	23 037	41 903	27 904	10 261	6 719
Meat	43	20	223	182	96	...
Minerals										
Copper Blister	4 590
Timber	664	855	1 397	565	356	1 547	8 480	1 555	1 485	891
Cattle	...	(198	(744	...	(744	(348	(664
	...	Head)	Head)	...	Head)	Head)	Head)
	...	100	378	...	378	174	332
Gypsum	12 050	10 454	10 135	5 357	15 538
Tranship	5 268	1 338
TOTAL	386 329	422 902	482 867	485 703	509 571	600 909	734 860	857 194	961 105	974 589

TOTAL

THROUGHPUT

	1968	1969	1970	1971	1972
Tonnes	1 105 140	1 320 476	1 426 710	1 453 485	1 584 906

SUMMARY OF EXPORTS TONNES

	1968	1969	1970	1971	1972	1973	1974	1975	1976	1977
General	18 536	12 736	13 200	15 134	18 792	21 523	16 971	38 152	29 236	15 129
Oil	2 047	489	6 061	1 488	1 147	3 922	385	580	2 386	...
Steel	103	843	31	30	2 002	2 884	2 720
Meat and Associated Products										
Frozen	31 044	33 373	27 856	27 089	30 406	26 867	11 301	9 998	11 444	12 211
Tallow	7 142	6 748	5 463	5 519	9 328	6 838	6 493	7 193	9 869	9 309
Hides	6 195	5 191	4 290	4 231	4 447	5 321	4 336	2 863	3 682	3 001
By Products	5 083	4 310	3 217	4 616	6 743	8 548	7 427	1 547	969	6 148
	49 464	49 622	40 826	41 455	50 924	47 574	29 557	21 601	25 964	30 669
Minerals										
Refined										
Copper	54 911	67 859	83 398	87 165	116 279	115 641	124 122	141 110	138 611	141 453
Concentrates—										
Copper	21 788	22 182	21 707	21 226	32 078	27 783	29 991
Concentrates—										
Zinc	85 042	163 356	180 790	188 786	165 349	234 430	249 935	238 043	169 359	247 039
Dross	4 324	2 594	7 115	3 049	1 295	2 817	1 682	...	6 599	4 959
Crude Lead	87 274	112 675	150 437	141 159	113 222	120 151	120 700	126 807	129 065	158 005
Ore	89	234	14 436	2 088	144	534	200	12	35	...
Nickel	3 133	21 516	23 867
Rock Phosphates	17 671	181 452	265 980
	231 640	346 718	436 176	444 035	418 471	495 280	517 865	558 854	674 420	871 294
Molasses	56 139	59 007	66 315	63 434	81 695	62 419	89 963	94 866	108 647	108 835
Sugar										
Bulk	331 206	405 391	380 161	371 939	461 956	362 743	484 889	525 704	427 535	539 071
Bagged	28 910	22 860
	360 116	428 251	380 161	371 939	461 956	362 743	484 889	525 704	427 535	539 071
Timber	563	539	737	1 653	749	809	833	257	518	335
Veneer	61	25	115	332	210	208	129
Wool	(485)	(128)	(203)	...	(290)	(81)	...
	Bales)	Bales)	Bales)		Bales)				Bales)	
	81	14	34	...	158	241	1 054	...	25	...
Cattle	(322)	(340)	(430)	(400)	(3 662)	(5 120)	...
	Head)	Head)	Head)	Head)				Head)	Head)	
	164	173	218	203	1 746	2 580	7 309
Crushed Metal	28 006	40 390
Tranship	5 268	1 338
TOTAL	718 811	897 574	943 843	967 782	1 075 335	994 750	1 141 676	1 243 762	1 279 463	1 576 700

TONNAGES

1973	1974	1975	1976	1977
1 595 659	1 876 536	2 100 956	2 240 568	2 551 289

SHIPPING INFORMATION

	1968	1969	1970	1971	1972	1973	1974	1975	1976	1977
No. of Vessels	390	419	522	448	455	420	471	408	433	437
Gross Tonnage	2 367 611	2 410 261	2 517 174	2 417 361	2 727 068	2 632 532	2 880 287	2 851 070	3 146 405	3 411 700

CARGO RECORDS

	Date	Vessel	Record
Imports	5.1.77	Bramora	discharged 56 506 tonnes of Bulk Oil
Exports	17.6.77	E.R. Scaldia	loaded 33 567 tonnes of Minerals
Deepest Draft Vessel	14.3.77	Edward Stevinson	12.04 metres loaded with Bulk Oil
Longest Vessel	26.3.76	Capetan Caras	252.36 metres
Highest D.W.T. Tonnage	26.3.76	Capetan Caras	85 180 tonnes



The "E. R. Scaldia" sailed from Townsville on 17th June, 1977 with a record cargo of 33,567 tonnes of Mount Isa minerals for London and European Ports.

The cargo consisted of 18,567 tonnes of mineral concentrates and 15,000 tonnes of crude lead.

HARBOUR BOARD DISTRICT

The Harbour Board District, from which Board Members are elected, embraces the rich agricultural Burdekin River delta and extensive pastoral and minerals areas in Western

Queensland through to the Northern Territory border. Cities and Shires within this district cover an area of 392,219 km² (151,436 square miles) — about six times the size of Tasmania.

