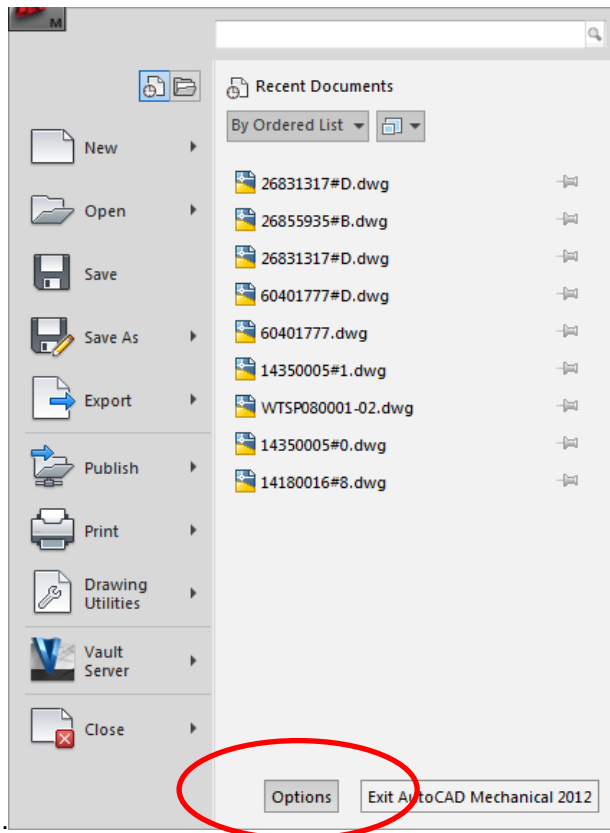
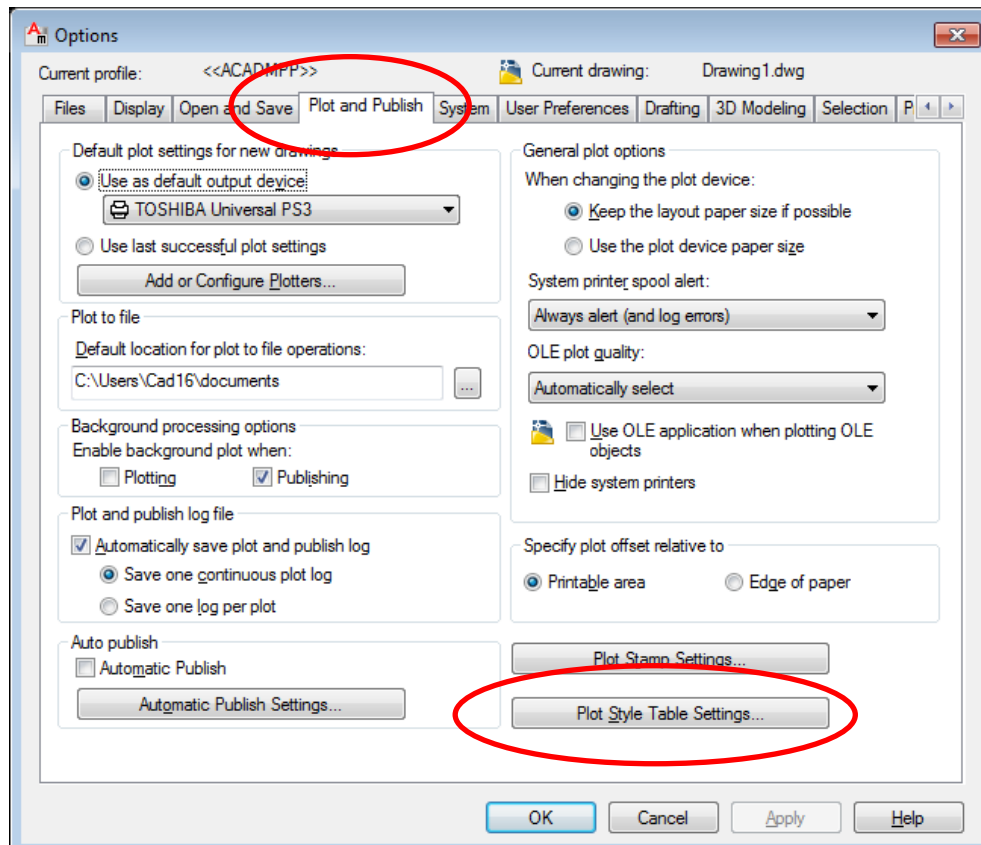


Plot Styles:

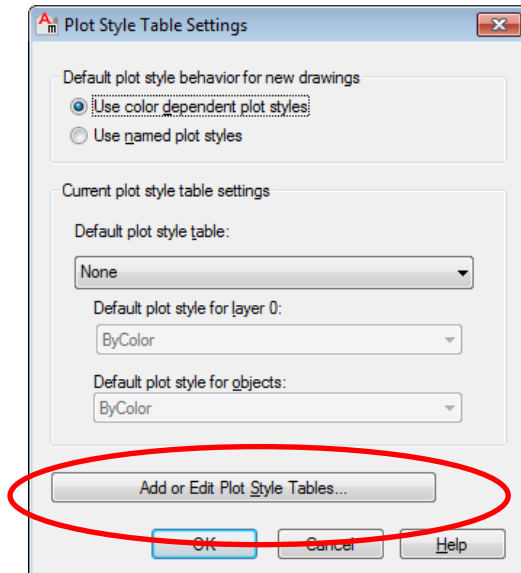
1. With AutoCad open, go to your 'Options' window.



2. Select 'Plot & Publish' tab, then select 'Plot Style Table Settings'



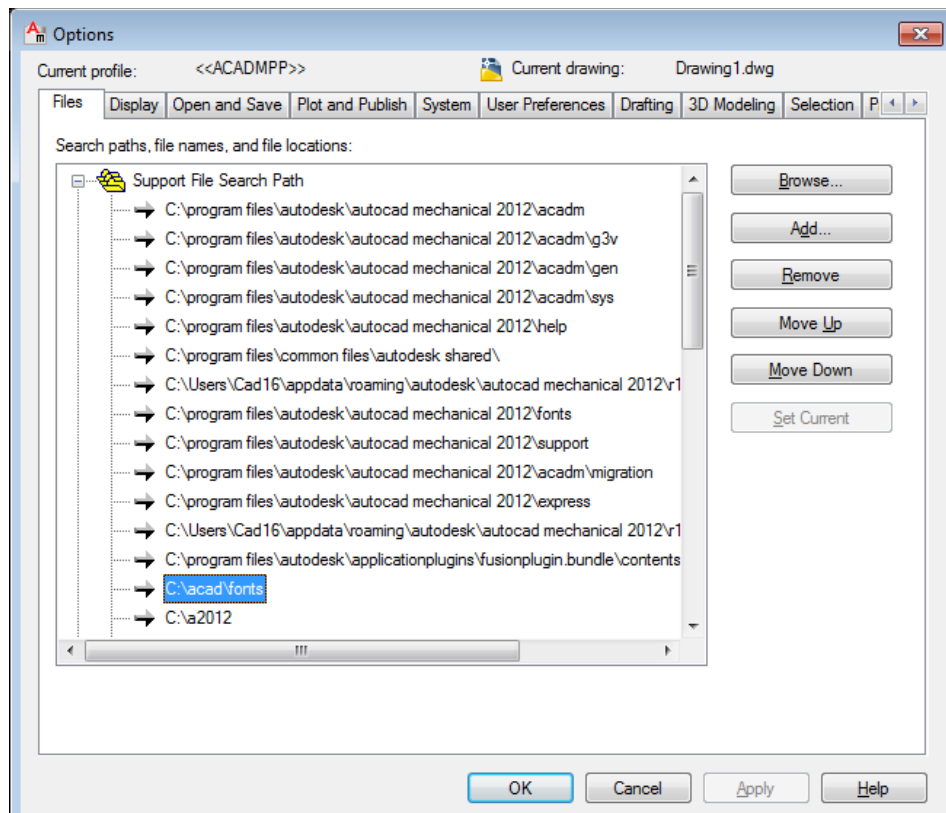
3. In the window that then opens, select 'Add or Edit Plot Style Tables'



4. A window browser will open to the folder where your AutoCad keeps your Plotstyles.
5. You can then drag and drop the 'A3.ctb' file (which was packaged with this document) directly into the folder.

Fonts:

1. In the 'Options' window, select the 'Files' tab.
2. Double Click the 'Support File Search Path' line to expand the list.
3. Look for the Path that specifies a 'Fonts' folder.
4. You will need to browse to this folder manually with Windows Explorer.
5. Drag & Drop the SHP & SHX files into this folder.



6. You will need to restart AutoCad.