

# Capability Statement

## 3D SCANNING, MECHANICAL PLANT AND PIPING SYSTEM DESIGN

**SETCH Design** is a Townsville based engineering design office with a multi-discipline team of experienced professionals, specialising in providing Mechanical Engineering services for the refinery, mining, fabrication, manufacturing and power generation industries.

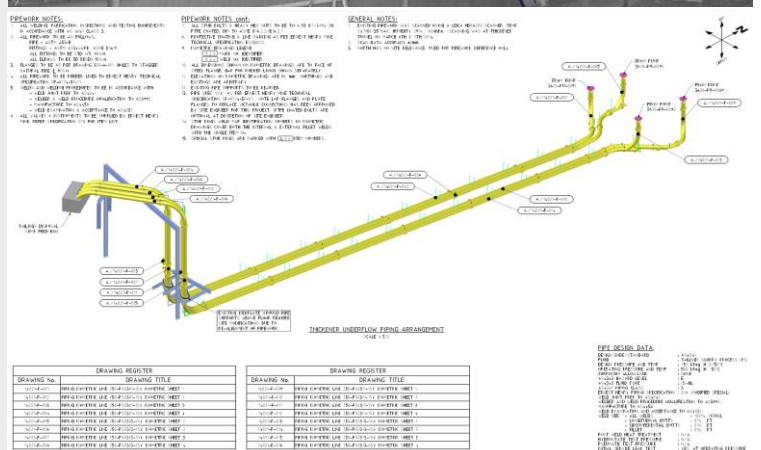
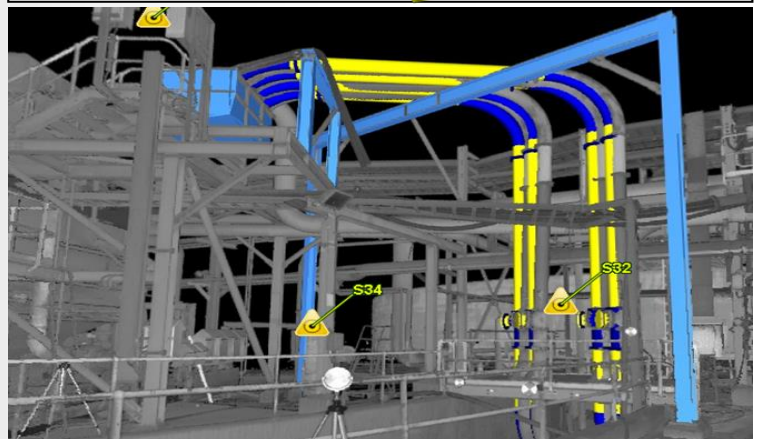
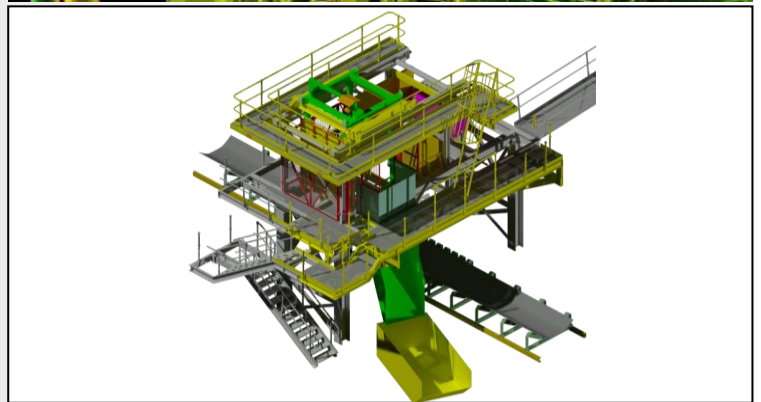
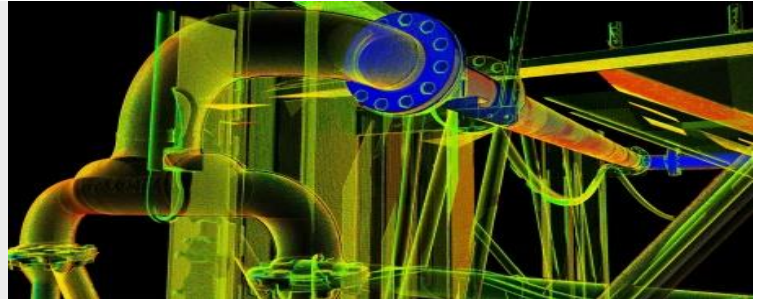
**SETCH Design** has extensive experience in the design and drafting of mechanical plant and equipment; including piping systems, pressure vessels, storage tanks, and materials handling equipment.

**SETCH Design** can provide engineering design for all disciplines of engineering through strategic alliances with locally based professionals.

**Our goal** is to stay at the forefront of new & proven technology.

### Services we offer

- Site experienced and technically competent personnel
- 3D Laser Scanning for accurate capture of data
- Engineering Design and drafting of all Disciplines: Civil, Structural, Mechanical, Piping, Electrical and Control Systems.
- Pressure Equipment Design
- Piping Stress Analysis
- Mechanical Plant and Equipment Layout
- Fabrication Detail Drawings & Piping Isometrics
- P&ID & PFD
- RPEQ Certification
- Project Management and Contractor Supervision



All staff have experience working under ISO9001 and office procedures are in-line with the requirements of this Standard.

# Capability Statement

## 3D LASER SCANNING - ACCURATE AS BUILT PLANT MODELS

### 3D POINT CLOUD SCANNING:

**SETCH Design** can provide a complete **3D Point Cloud** scanning service using our state of the art **Leica P40 Pulse Based Scanner**.

Using this exciting technology, we are able to provide: a new dimension in site measuring and an accurate '3D world' in either point data or HD photo overlay.

This information is useful for detailed design, design reviews, HAZOPs and hazard Identification, clash detection and shut down planning. All of which result in cost savings to the project.

### Benefits of 3D Scanning:

- A useable '3D World' is created that is like 'being on site, without being there'. This is a great advantage when conducting; design reviews, HAZOPs and hazard Identification, clash detection, shut down planning from great distances.
- 'Unmeasurable' plant and equipment can now be accurately measured, modelled and AS Built.
- We can **accurately** measure and model with a considerable time saving to conventional methods.
- Dimensional data is collected safely without the requirement to isolate or scaffold sections of plant.
- Data collection is completed without interruption to the operation of the plant.
- Newly fabricated components or piping can be dimensionally checked when completed, prior to installation to ensure a correct fit and potentially save on extensive variations.
- The number of field welds can be confidently reduced and/or eliminated in most cases with the benefit of reducing shutdown duration.
- Time, safety, accuracy, efficiency, confidence...

