



300T Liebherr LR 1300 SXW Crawler Crane



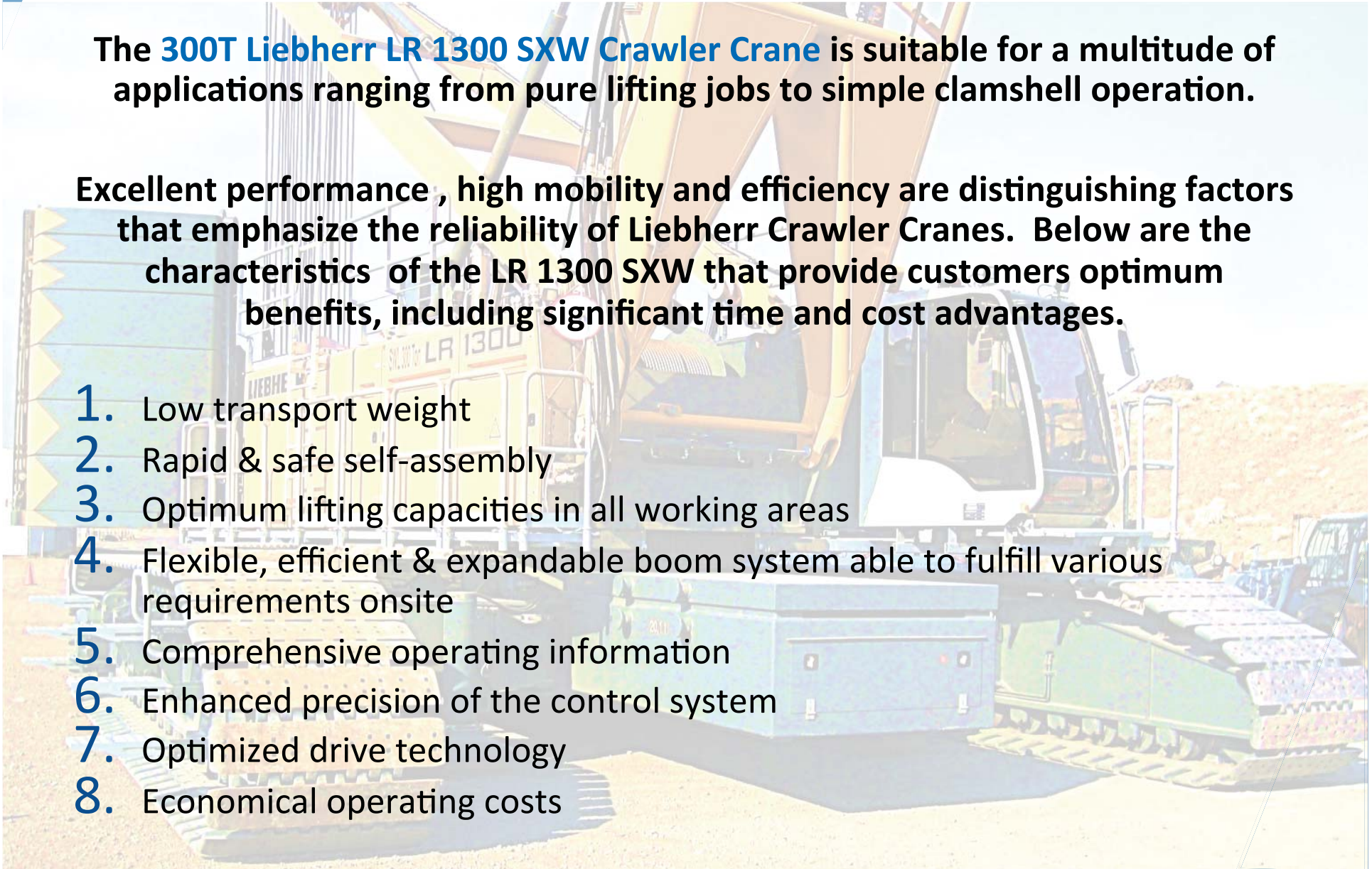
Performance & Reliability



The **300T Liebherr LR 1300 SXW Crawler Crane** is suitable for a multitude of applications ranging from pure lifting jobs to simple clamshell operation.

Excellent performance , high mobility and efficiency are distinguishing factors that emphasize the reliability of Liebherr Crawler Cranes. Below are the characteristics of the LR 1300 SXW that provide customers optimum benefits, including significant time and cost advantages.

1. Low transport weight
2. Rapid & safe self-assembly
3. Optimum lifting capacities in all working areas
4. Flexible, efficient & expandable boom system able to fulfill various requirements onsite
5. Comprehensive operating information
6. Enhanced precision of the control system
7. Optimized drive technology
8. Economical operating costs



Technical Data



300T Liebherr LR 1300 SXW

Capacity

Max. lifting capacity – 300 t

Crane Configurations

Main boom up to 98 m

Main boom up to 83 m with 7 m fixed jib

Counterweights – 176 t

Engine

Liebherr D 9508

V 8 cylinder diesel engine

450 kW at 1900 rpm

Winches

Line pull (1st layer) – 215 kN

Line pull (7th layer) – 150 kN

Load Chart

83 m Main Boom + 7 m Fixed Jib



Ident. no.: 10530651/95738/ Main boom foot: 2821-1
 Slewing range: Limited * Main boom head: 2821-1
 Foot print: 3 - Blocked crawlers
 Rear counterweight [t]: 124.0
 Carbody counterweight [t]: 52.6

Reeving			1	2	3	4	5	6	7	8
Outre- ach [m]	Main boom angle [°]	Lift height [m]	Load capa- city [t]	Load capa- city [t]	Load capa- city [t]	Load capa- city [t]	Load capa- city [t]	Load capa- city [t]	Load capa- city [t]	Load capa- city [t]
83.0 m Main boom, Load fall point 1 - Jib head Jib head (0906-1) 7.0 m Jib										
Offset 30 [°]										
9.2	88.0	92.0			45.0	59.7	74.2	77.7		
10.0	87.7	91.9	15.1	30.1	45.0	59.7	74.2	77.7		
11.0	87.1	91.8	15.1	30.1	45.0	59.7	74.1	77.3		
12.0	86.4	91.7	15.1	30.1	45.0	59.7	73.3	75.2		
13.0	85.8	91.6	15.1	30.1	45.0	59.7	72.7	73.5		
14.0	85.2	91.5	15.1	30.1	45.0	59.7	71.8	72.0		
16.0	83.9	91.2	15.1	30.1	45.0	59.7	68.2	68.4		
18.0	82.6	90.8	15.1	30.1	45.0	59.7	65.6	65.8		
20.0	81.3	90.5	15.1	30.1	44.8	56.4	60.5	60.8		
22.0	80.0	90.0	15.1	30.1	44.5	51.6	54.3	54.7		
24.0	78.7	89.5	15.1	30.1	44.3	47.7	49.3	49.7		
26.0	77.3	89.0	15.1	30.1	44.2	44.7	45.3	45.7		
28.0	76.0	88.4	15.1	29.6	40.6	40.9	41.3	41.7		
30.0	74.7	87.8	15.1	28.9	36.8	37.1	37.6	38.0		
32.0	73.3	87.1	15.1	28.3	33.4	33.9	34.3	34.6		
34.0	72.0	86.4	15.1	27.8	30.5	31.0	31.5	31.8		
36.0	70.6	85.6	15.1	27.4	28.1	28.7	29.1	29.4		
38.0	69.2	84.8	15.1	26.3	26.1	26.7	27.0	27.2		
40.0	67.8	83.9	15.1	24.3	24.3	24.8	24.8	24.8		
42.0	66.4	82.9	15.1	22.5	22.6	22.6	22.6	22.6		
44.0	65.0	81.9	15.0	20.7	20.6	20.6	20.6	20.6		
46.0	63.5	80.8	15.0	18.9	18.8	18.8	18.8	18.8		
48.0	62.0	79.6	15.0	17.2	17.1	17.1	17.1	17.1		
50.0	60.6	78.4	14.9	15.6	15.5	15.5	15.5	15.5		
55.0	56.7	75.0	12.3	12.2	12.1	12.1	12.1	12.1		
60.0	52.6	71.1	9.4	9.4	9.3	9.3	9.3	9.3		
65.0	48.3	66.5	7.0	7.0	6.9	6.9	6.9	6.9		
70.0	43.7	61.2	4.9	4.9	4.8	4.8	4.8	4.8		
75.0	38.5	54.9	3.1	3.0	3.0	3.0	3.0	3.0		
78.0	35.1	50.4	2.1	2.0						

The LR 1300 SXW has a **large range of multifunctional boom/jib systems with exceptional performance data.** Excellent lifting capacity is achieved not only during heavy lifts with the main boom but also when working with the luffing jib.

Combined with a high level of mobility; the **crane is able to travel up and down gradients of up to 20%,** the possibilities of application are greatly enhanced for customers.

[View Technical Specifications & Product Brochure.](#)

Wind Power Competence



The LR 1300 SX(W) model is precisely tailored for the application of wind turbine assembly and servicing.

Narrow-gauge undercarriage: The standard 8 m width across the tracks can be reduced to 4.8 m to provide economical mobility when space is limited. It can also move with long boom systems on narrow roads from site to site, making it especially efficient in wind parks.

Innovative boom system: This crane offers highest capacities & lifting heights required for the assembly of wind turbines.

Two crane winches: Each has a lifting capacity of 15 tonnes & high winch speeds to allow fast lifting & high lifting performance.

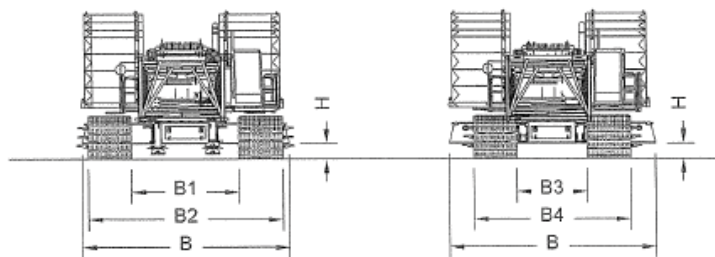


Fig. 9: Dimensions of basic machine with track width adjustment

[Click here for more information](#)



Efficient Transport



The low weight and innovative compact design of Liebherr crawler cranes enable quick and economical transportation to site.

All equipment can be transported on standard trucks and many of the crane parts have been designed to fit into the main boom sections or into standard containers.



Safety Features

Safety is of utmost importance.

The LR 1300 SXW features extensive safety systems:

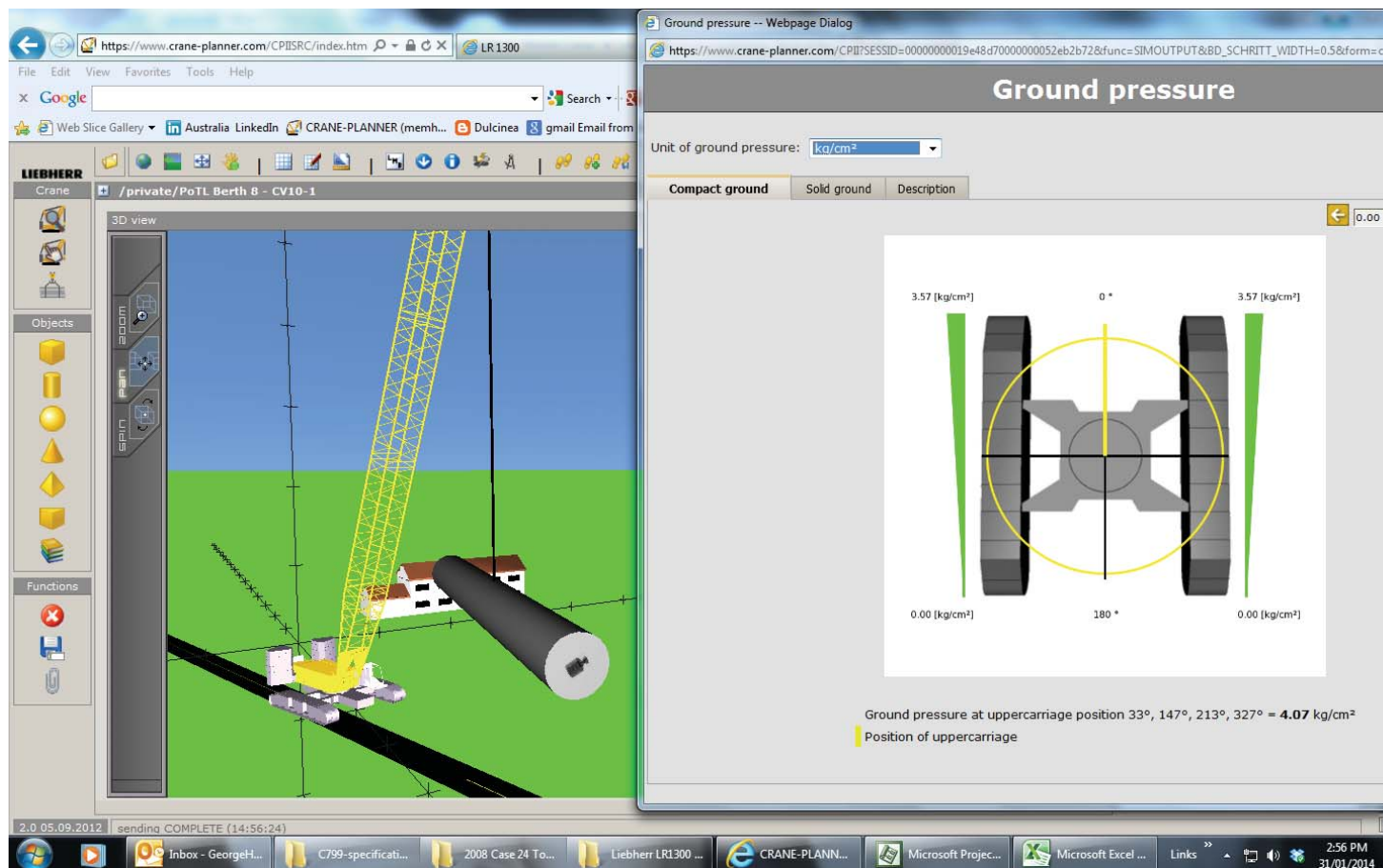
- Anti-slip catwalk & steps with full handrail kit on upper carriage for efficient movability
- Unobstructed, all-round glazing cabin for excellent operator visibility of entire working area
- Reverse camera & alarm
- GPS limiter – monitors proximity of power lines & prevents crane from getting too close
- Emergency stop button
- Hand-held fire extinguishers
- Efficient cooling system allows problem-free operation even under severe environmental conditions
- The extensive diagnostic system recognizes and localizes possible errors at an early stage
- Flashing/rotating light
- Two-way radio & aerial
- Floodlights x3



Crane Planner Tool



Unique to the Liebherr crane is the online 'Crane Planner' tool, which enables users to plan, simulate and document lifts more precisely on their computer.



Crane Planner Features



The Liebherr Crane Planner enables users to:

- Load real load charts of their crane by serial number
- Calculate ground pressure for compact and solid ground
- Load precise data due to real LMI online calculation of lifting capacity and ground bearing pressure
- Provide tailor-made documentation of the processes/working steps of the planned job
- Create their own specific job site by adding different objects, structures etc to pre-plan lifts
- Create & print their own PDF to aid briefing of crews and/or client

For more information on Liebherr Crane Planner:



Microsoft
PowerPoint Presentation

Operator Comfort



Everything has been considered to facilitate handling of the machine for the operator.

- Comfortable, spacious cabin
- Adjustable seat
- Air-conditioning
- Standard cabin tilting system
- Operating elements clearly & ergonomically arranged
- Two joysticks & two foot pedals to enable precision & ease of crane movements



Applications





Cliff Potter: 0407 522 758

Office: +61 7 4759 0300

Fax: +61 7 4759 0333

www.mineforce.com



MINEFORCE
Australia

