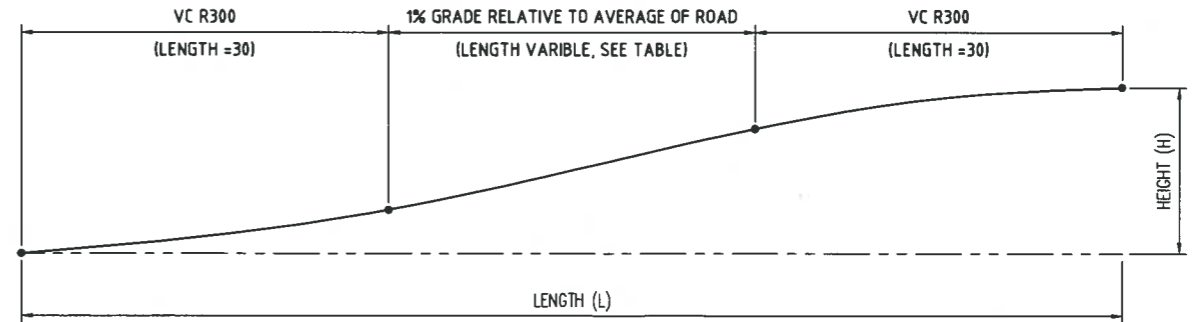
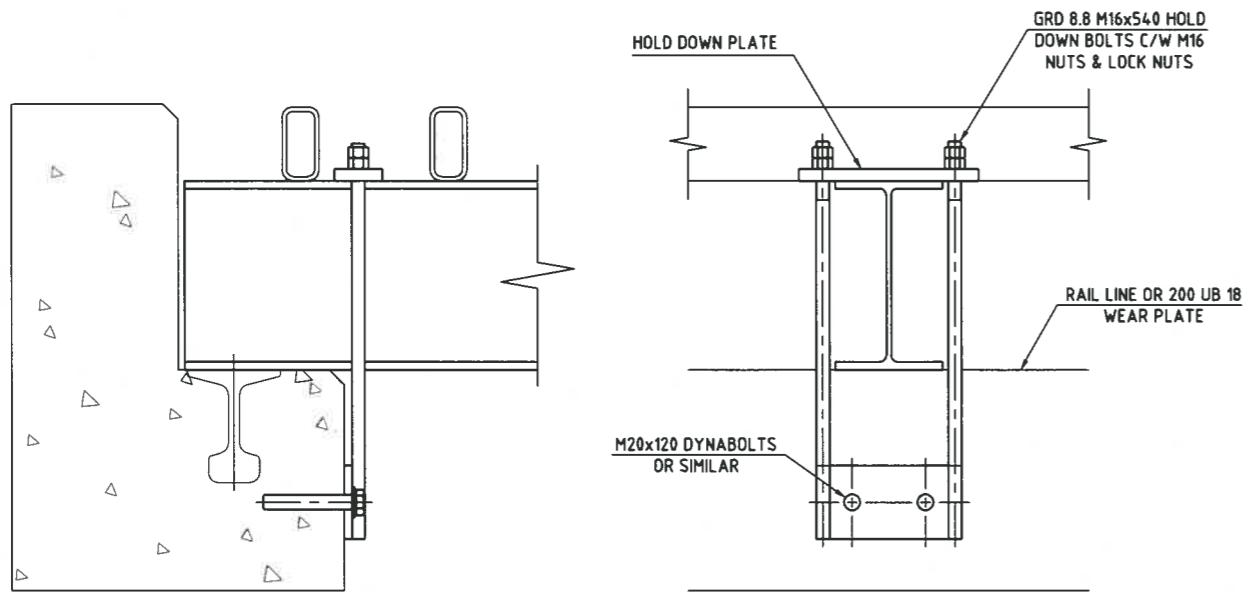


- NOTES:
1. CONCRETE TO BE 32MPa/20
 2. 4 HOLD DOWN BOLTS ARRANGEMENTS ARE TO BE INSTALLED - ONE PER CORNER OF EACH GRID SEGMENT
 3. WEIGHT APPROX. 20.2 TONNES FOR 4.0m SEGMENT
 4. NOTE: ALL COMPONENTS TO BE HOT DIP GALV. TO AS 4680
 5. ALL PLATE TO BE GRADE 250 TO AS 3678
 6. ALL BOLTS & NUT TO BE GRADE 8.8 TO AS 1214



- HALF LONGITUDINAL SECTION -

ROAD APPROACH RAMP GRADIENT DETAILS											
HEIGHT	LENGTH	DISTANCE FROM GRID									LENGTH OF GRADE
		10	20	30	40	50	60	70	80	90	
0.7	100	0.68	0.63	0.55	0.45	0.35	0.25	0.15	0.07	0.02	4.0
0.6	90	0.58	0.53	0.45	0.35	0.25	0.15	0.07	0.02	-	3.0
0.5	80	0.48	0.43	0.35	0.25	0.15	0.07	0.02	-	-	2.0
0.4	70	0.38	0.33	0.25	0.15	0.07	0.02	-	-	-	1.0
0.3	60	0.28	0.23	0.15	0.07	0.02	-	-	-	-	0

D	13/04/17	PLAN NUMBERS ADDED
C	02/04/17	GENERAL NOTES UPDATED
F	23/07/17	RPEQ NUMBER REMOVED & UPDATED
E	08/05/17	DIMENSION UPDATE ON PLAN R027

DETECH ENGINEERING
Innovative Solutions
www.tei.com.au

LEVEL DATUM: AHD der
Associated Plans:
Plan No. 1 of 1

Drafted: G. JORDAN
Designed: G. BALLARINO
Examined By Client: [Signature]
Checked: [Signature]
Date: 2/8/17

Approved by Council's EMES:
Date: 2/8/17

Survey Number: XXXX
Field Books: XXXX
Level Books: XXXX



HINCHINBROOK SHIRE COUNCIL
STANDARD GRIDS
GRID CONCRETE & EARTHWORK DETAILS

Job No: 17021-002
Plan No: R026
F B C D E