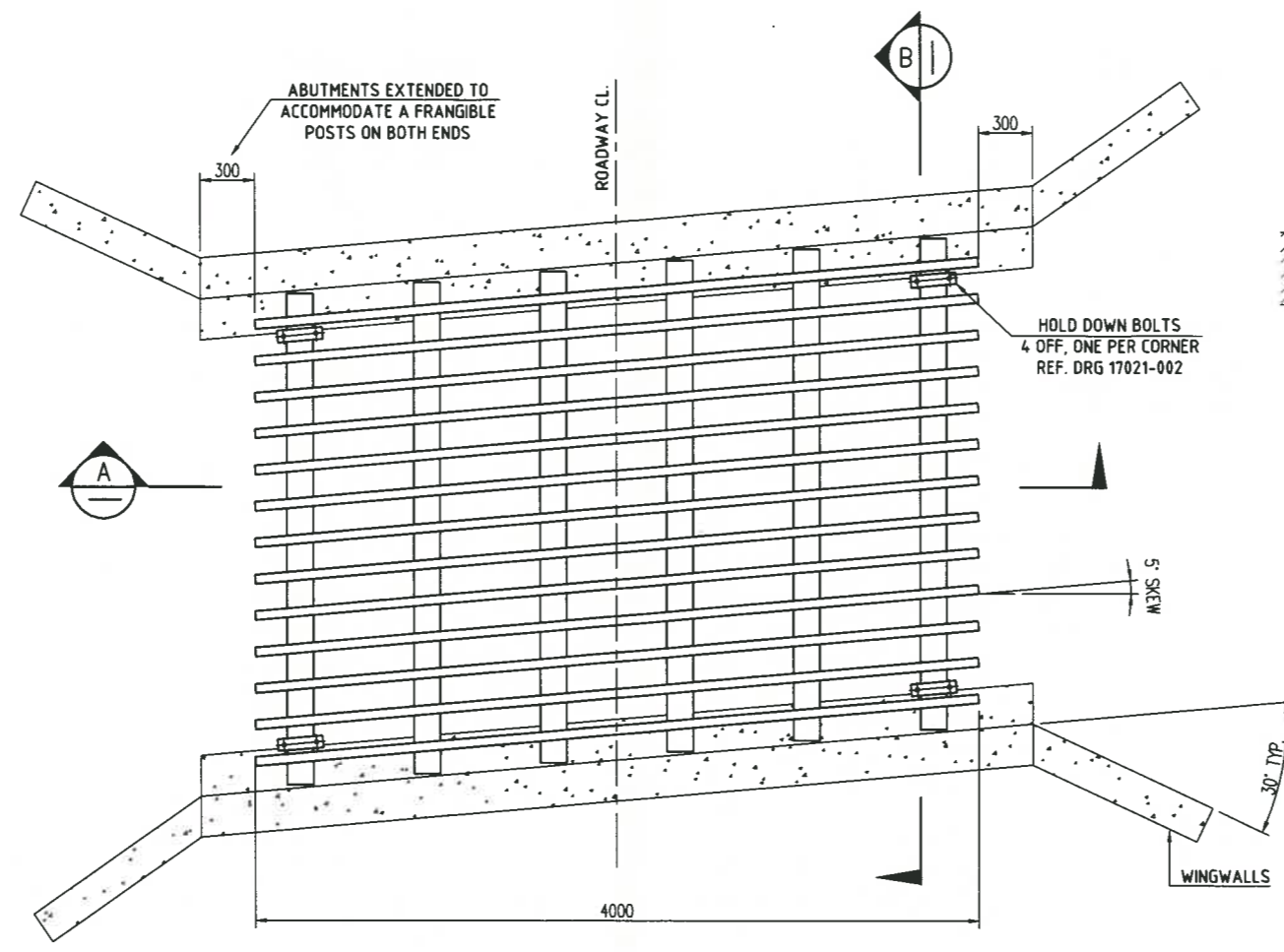
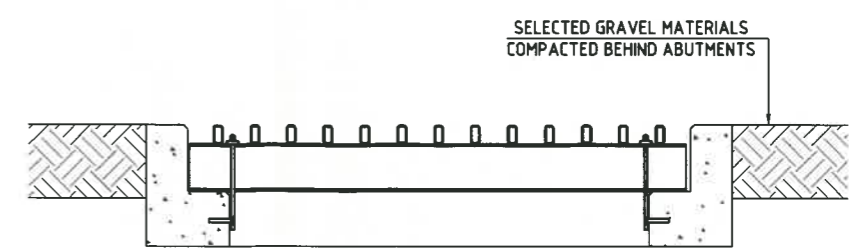


- BEARER & RAIL DETAILS -
SCALE 1:20

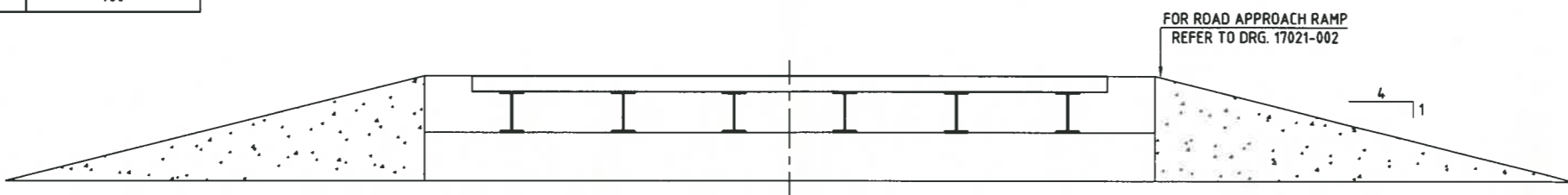
SPAN (m)	*OVERHANG (mm)	**BEARER SPACING (mm)
2.0	200	600
2.5	250	666
4.0	250	700



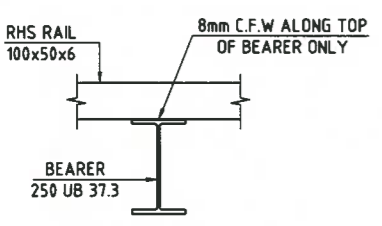
- PLAN -
SCALE 1:20



- SECTION VIEW B-B -
- GRID SIDE VIEW -
SCALE 1:20



- SECTION VIEW A-A -
- GRID FRONT VIEW -
SCALE 1:20



- WELD DETAILS -
SCALE 1:10

NOTES:

- THE SPAN OF GRIDS MAY BE EITHER 2400mm OR 2700mm STANDARD SIZES OF GRIDS FOR NORMAL INSTALLATIONS ARE BELOW:
SINGLE 4m LONG x 2.4/2.7m WIDE GRID SEGMENT
ALTERNATIVELY 2.0m OR 2.5m LONG SEGMENTS MAY BE USED PROVIDED HOLDING DOWN BOLTS ARE INSTALLED AT EACH CORNER OF EACH SEGMENT
- EVEN NUMBERS OF STANDARD SEGMENTS SHOULD BE USED WHERE POSSIBLE
- ELSEWHERE EVEN NUMBERS OF NON-STANDARD SEGMENTS SHOULD BE USED. THESE SHOULD VARY FROM THE STANDARD SEGMENT ONLY IN WIDTH OF THE SEGMENT AND THE NUMBER AND THE SPACING OF THE BEARERS. THE STANDARD WIDTH MAY BE VARIED AS REQUIRED, PROVIDING THE BEARER SPACING DOES NOT EXCEED 750, AND THE RAIL OVERHANG DOES NOT EXCEED 275

STANDARD GRID WIDTHS			
LANE/S WIDTH (m)	FORMATION WIDTH (m)	MIN. GRID WIDTH (m)	GRID SEGMENTS
4.0	7.0	4.0m	1/4.0 SEGMENT
5.5	7.0	5.0m	2/2.5 SEGMENTS
6.2	8.0	6.0m	3/2.0 SEGMENTS
8.0	8.0	8.0m	2/4.0 SEGMENTS

- WIDTH MARKERS ARE REQUIRED FOR GRIDS.
- COMMERCIALY MANUFACTURED GRIDS MAY BE USED PROVIDED THEY ARE CERTIFIED TO MEET THE AUSTRROADS (1992) T44 AND W70 LOADING CONDITIONS
- WHERE A GRID IS COMPOSED OF TWO OR MORE SEGMENTS THE MAX SPACING BETWEEN SHALL BE 40mm
- ALL WELDING TO BE TO AS 1554.1
- ALL COMPONENTS TO BE HOT DIP GALV. TO AS 4680
- ALL PLATE TO BE GRADE 250 TO AS 3678
- ALL BOLTS & NUT TO BE GRADE 8.8 TO AS 1214

D	02/04/17	GENERAL NOTES UPDATED, GRID BEARER SPACING TABLE ADDED
C	27/03/17	ABUTMENTS UPDATED TO SUIT END PANELS
F	23/07/17	RPEQ NUMBER REMOVED & UPDATED
E	08/05/17	DIMENSION UPDATES ON PLAN R027

DETECH ENGINEERING
Innovative Solutions
www.tel.com.au

LEVEL DATUM: AHD der
Associated Plans:
Plan No. 1 of 1

Drafted: G. JORDAN
Designed: GBALLARINO
RPEQ 5933
Checked: SB
Checked: J. Ball
Examined By Client: [Signature]
Approved by Council's EMES: [Signature]
Date: 2, 8, 17

Survey Number: XXXX
Field Books: XXXX
Level Books: XXXX

HINCHINBROOK SHIRE COUNCIL

HINCHINBROOK SHIRE COUNCIL
Job No: 17021-001
Plan No: R025
F B C D E

STANDARD GRIDS
GRID ARRANGEMENT