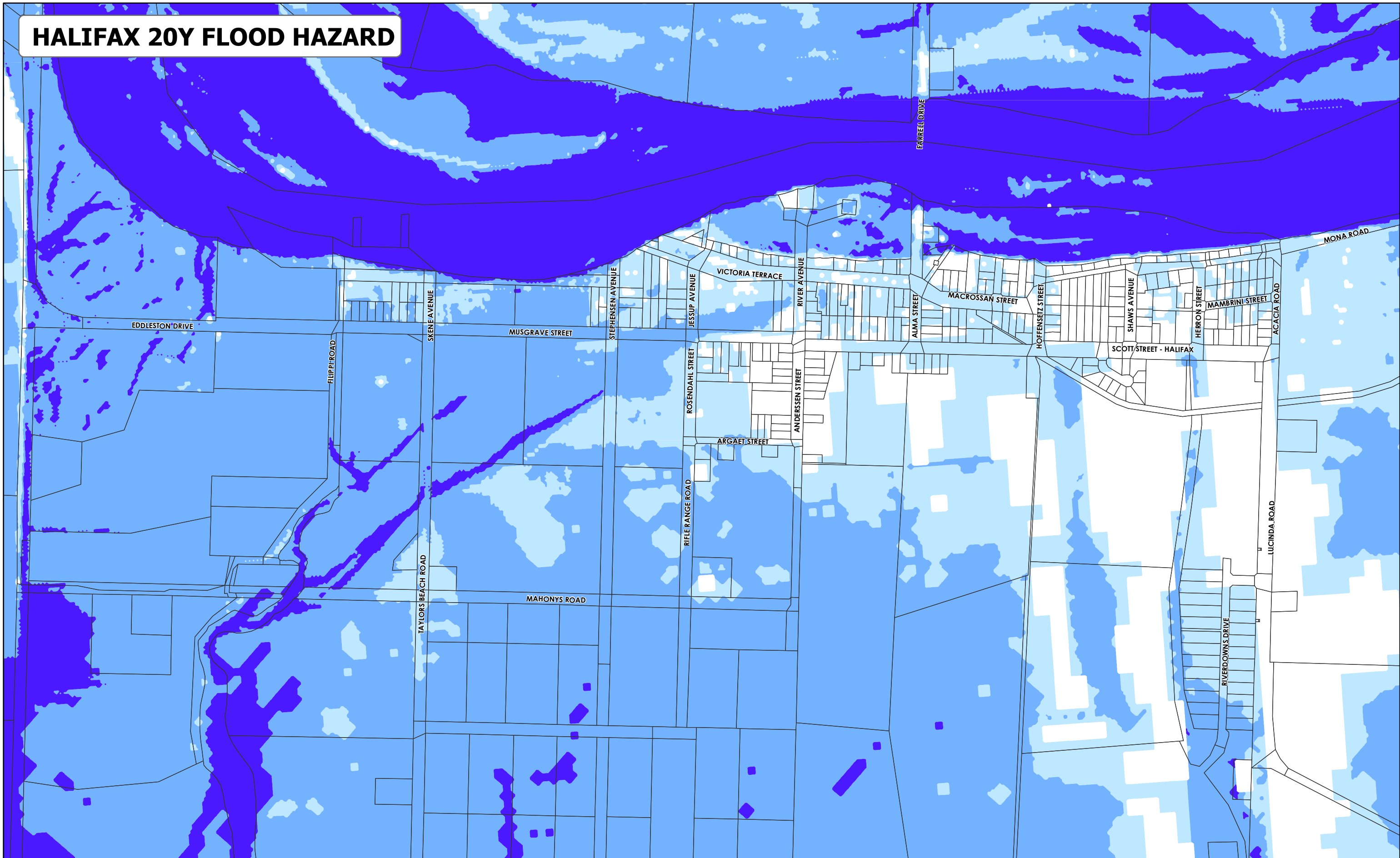


HALIFAX 20Y FLOOD HAZARD



Hinchinbrook Shire Council

Hinchinbrook Shire Council provides this information using mapping data supplied by consultants BMT WBM for the Herbert River Flood Study (2015). Council does not under any circumstances accept or admit liability in any way for an incorrect interpretation of the information derived from the mapping. Please note there can be anomalies in flow depth across the flooded area, due to variations in flow restrictions, flow velocity, direction and changes to the landscape. The information is provided as a guide only, and recipients are advised to seek professional assistance to interpret the data for their requirements.

Path: G:\projects\engineering\James Stewart\HALIFAX 20Y FLOOD HAZARD.mxd
 Compiled By: roslyn1543 Date: 02/12/2016

20 Year Flood Hazard Flood Hazard

- Low
- Medium
- High
- Cadastre

While every care is taken to ensure the accuracy of this product, Hinchinbrook Shire Council makes no representations or warranties about the accuracy, reliability, completeness or suitability for any particular purpose and disclaims all responsibility and all liability (including without limitation, liability in negligence) for all expenses, losses, damages (including indirect or consequential damage) and costs you may incur as a result of the product being inaccurate or incomplete in any way or for any reason.

© Hinchinbrook Shire Council 2016

Geocentric Datum of Australia 1994 (GDA94)

